



601 Mercury Drive
Champaign, IL 61822
USA

OFFICIAL
PARTNER



OFFICIAL TRACK & FIELD
EQUIPMENT SUPPLIER



SAS
ATHLETICS

Baseball & Softball Equipment

GILLATHLETICS.COM
601 MERCURY DRIVE | CHAMPAIGN, IL 61822

800.637.3090
SALES@GILLATHLETICS.COM

Ph: 614-831-1792 /Email: inquiries@sas-athletics.com / Web: www.SAS-Athletics.com

BASEBALL

CANTILEVER DUGOUT

8' tall x 8' wide cantilever dugout with 24" rear offset. Bolt together design with a 120 MPH wind rating and 50 lb/sq ft snow rating. Choose from 15 different powder coat colors. Roof only available in white.

340812CXX	12' Long	\$2790
340824CXX	24' Long	\$4825
340836CXX	36' Long	\$6860
340848CXX	48' Long	\$8895

GAMESHELTER DUGOUT

8' tall x 8' wide. Bolt together design with a 120 MPH wind rating and 50 lb/sq ft snow rating. Choose from 15 different powder coat colors. Roof only available in white.

330812CXX	12' Long	\$2150
330824CXX	24' Long	\$3700
330836CXX	36' Long	\$5260
330848CXX	48' Long	\$6805

CUSTOMIZABLE

01	02	03	04	05	06	07	08	09	10	11	12	13	14	15
LIGHT BLUE	ROYAL BLUE	RED	WHITE	ORANGE	YELLOW GOLD	SILVER	OLD GOLD	GRAY	MAROON	PURPLE	BLACK	NAVY BLUE	KELLY GREEN	DARK GREEN

*To specify color with order, use the two-digit number of your color selection to replace XX in the item number.

*Gray and Black powder coat available in Gloss or Flat

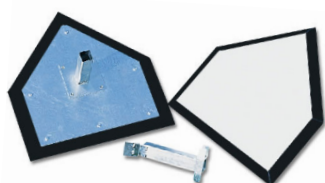
PITCHER'S MOUND

- Artificial turf adheres to fiberglass mound
- Requires little maintenance
- No-lip design eliminates risk of bad bounces
- Mound is designed to adapt to dirt, grass, and artificial turf surfaces
- Adult 10" mound designed for High School, College, and Pro Baseball
- Youth 8" mound designed for all youth leagues, Pony League, Middle School and Junior High School

54621	Adult Mound with Turf	\$19285
54622	Adult Mound without Turf	\$12240
54623	Single 3 Piece Bullpen with Turf	\$10675
54624	Single 3 Piece Bullpen without Turf	\$7800
54625	Double 5 Piece Bullpen with Turf	\$16070
54626	Double 5 Piece Bullpen without Turf	\$12240
54628	Adult Replacement Turf	\$959
54620	4 Piece Youth Mound with Turf	\$5760
54627	Youth Replacement Turf	\$599



MAJOR LEAGUE HOME PLATE



Sturdy hard rubber base designed to withstand the battering of cleats. Runners sliding into home won't dislodge the base thanks to the included anchor, while the beveled edges prevent cleats or uniforms from snagging during the slide.

33250 **\$122**

MAJOR LEAGUE SHOCK ABSORBING BASES



Cushioned base designed to help reduce injury. Durable, one-piece molded rubber base with no metal parts. Removable white center post for easy storage and replacement. Does not include anchors.

33251	Set of 3 Bases	\$254
33253	White Center Posts (3)	\$39

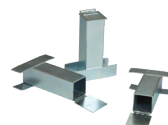
4-WAY PITCHERS RUBBER



Molded rubber construction with inner support tubing lasts through tough games and practices. Can be periodically rotated for use over multiple seasons.

33252 Pitchers Rubber **\$116**

GROUND ANCHOR SET



33254 Ground Anchors (3) **\$28**

BASE PLUGS



33255 Base Plugs (3) **\$50**

BASEBALL



BATTING TUNNELS

Single

330155 55' Long **\$7060**

330175 75' Long **\$7725**

Double

330255 55' Long **\$11590**

330275 75' Long **\$12800**

Triple

330355 55' Long **\$16000**

330375 75' Long **\$17990**

- Heavy duty 8 $\frac{5}{8}$ " OD steel poles
- Premium architectural black powder coating
- Four steel pole, open-cage design creates an open cage and hanging net so balls stop without rebound
- $\frac{1}{4}$ " galvanized aircraft quality cable
- Easy turnbuckle adjustment, and quick clip (snap hook) net attachment
- #36 weather treated knotted netting, machine sewn stitched rope borders, top center rib line for height control, and double door entry on one end



BATTING CAGES

The cage is 10' high x 12' wide and available in either a 50' or 70' length. Netting is constructed of a durable, black UV resistant weather treated nylon with a 1 $\frac{3}{4}$ ", #420 square mesh. The net is supported by 2 $\frac{1}{2}$ " diameter aluminum uprights to provide lightweight, yet extremely rigid supports. Uprights extend into either outdoor or indoor sleeves and are furnished with ropes, pulleys, and rope cleats to provide ease of set up of the entire system without the use of ladders.

330150	50' Cage (8 Sleeves Required)	\$3025
330170	70' Cage (10 Sleeves Required)	\$3940
3301025	Outdoor Ground Sleeve (1)	\$56

BASEBALL FOUL POLES

Baseball foul poles extend the foul lines vertically to provide a visual indication of the fair versus foul territory. Made of two sections that bolt together in the field, constructed of heavy-duty steel pipe. Available in 5 heights, sold in pairs in a durable powder coat finish.

- 8' wing panels
- Available in optic yellow (18), white (04) and optic orange (24)
- GSMIF (ground sleeve miss installation forgiveness)

In-Ground/Sleeved:

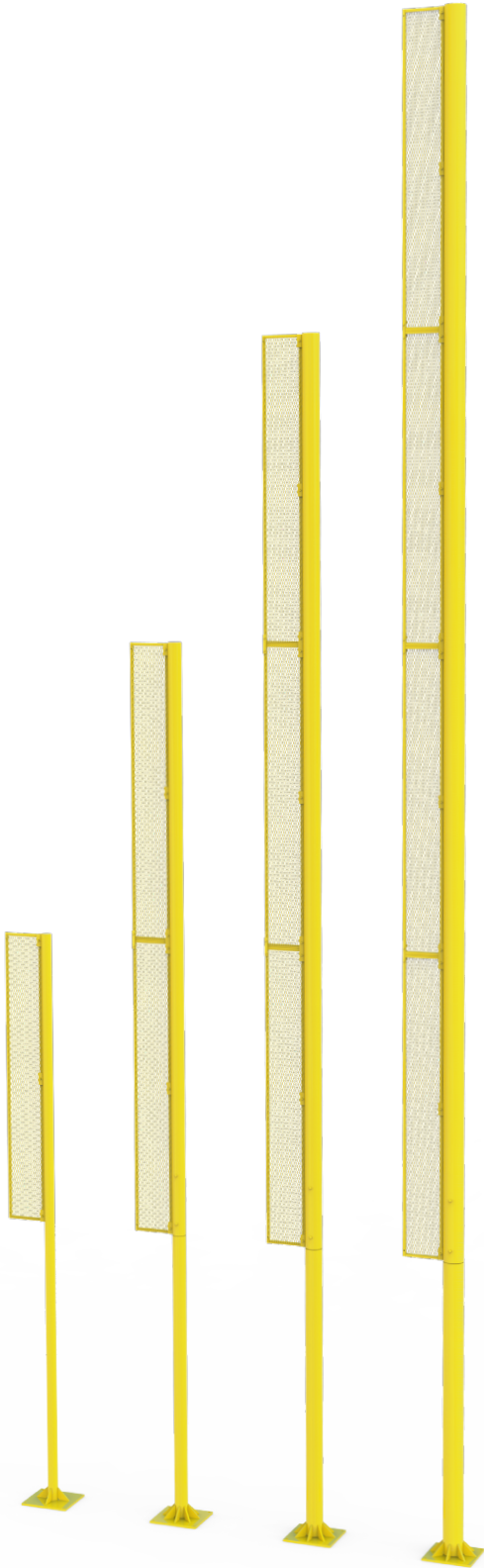
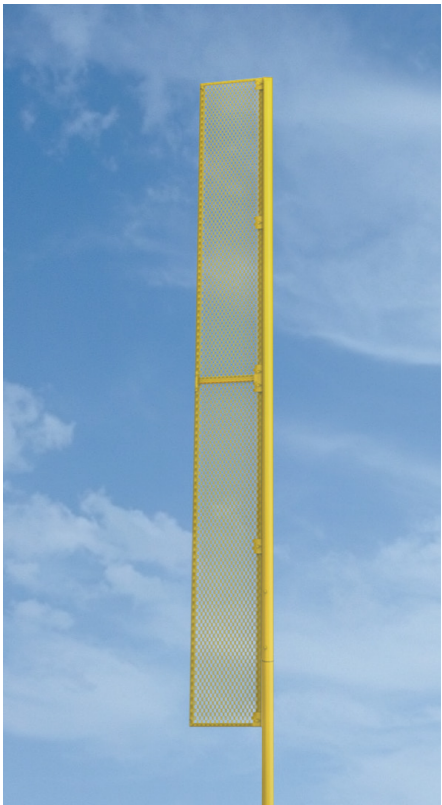
333012CXX	12', No Wings	\$289
333016CXX	16', 1 Wing	\$1060
333024CXX	24', 2 Wings	\$3285
333032CXX	32', 3 Wings	\$4115
333040CXX	40', 4 Wings	\$5775

Ground Sleeves

00402000	For 12'	\$129/ea
F39903	For 16'	\$144/ea
F39902	For 24'	\$216/ea
F39901	For 32'	\$288/ea
F39901	For 40'	\$288/ea

Surface Mount

333116CXX	16', 1 Wing	\$2115
333124CXX	24', 2 Wings	\$3915
333142CXX	32', 3 Wings	\$6000
333140CXX	40', 4 Wings	\$6785



OUTDOOR PADDING



ESSENTIALS OUTDOOR WALL PADS

2" thick polyurethane foam core attached to 1/2" thick, sealed, water resistant Extrira® wood. Each panel is completely covered in 15oz UV treated vinyl. Pad meets the minimum ASTM F2440 impact standard specification. Threaded wood inserts on pad allow for chain link fence attachment. May also be installed using "Z" clips allowing seasonal removal, repair, or replacement. Pads built to your specified dimensions with a maximum width of 4'. Custom Graphics available.

36402XX	2' x 4' Pad	\$92
9036402XX	Custom Size - 2' x 4' or less	\$97
36404XX	4' x 4' Pad	\$151
9036404XX	Custom Size - 4' x 4' or less	\$169
36406XX	4' x 6' Pad	\$242
9036406XX	Custom Size - 4' x 6' or less	\$267
36408XX	4' x 8' Pad	\$270
9036408XX	Custom Size - 4' x 8' or less	\$298

WALL ATTACH Z-CLIPS

362040	For (1) Outdoor Pad under 6' tall	\$41
362020	For (1) Outdoor Pad over 6' tall	\$29



Use the two-digit number of your color selection to replace XX in the item number.

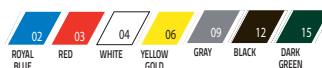


Custom Graphics Available for Essentials and Elite Pads (Additional Charge) Add SP to end of item #

ELITE OUTDOOR WALL PADS

3" thick polyurethane foam core attached to 1/2" thick, sealed, water resistant Extrira® wood. Each panel is completely covered in 19oz UV treated vinyl. Pad meets the minimum ASTM F2440 impact standard specification. Threaded wood inserts on pad allow for chain link fence attachment. May also be installed using "Z" clips allowing seasonal removal, repair, or replacement. Pads built to your specified dimensions with a maximum width of 4'. Custom Graphics available.

36502XX	2' x 4' Pad	\$118
9036502XX	Custom Size - 2' x 4' or less	\$133
36504XX	4' x 4' Pad	\$190
9036504XX	Custom Size - 4' x 4' or less	\$211
36506XX	4' x 6' Pad	\$294
9036506XX	Custom Size - 4' x 6' or less	\$324
36508XX	4' x 8' Pad	\$335
9036508XX	Custom Size - 4' x 8' or less	\$369



Use the two-digit number of your color selection to replace XX in the item number.



FENCE TOPPERS

An inexpensive way to outline the perimeter of your ballpark and reduce player injuries by adding protection and clear visibility. Constructed of bright yellow 4" diameter rigid corrugated plastic tubing. Pre-split for use with install tool for easier installation. Weather treated and UV protected to last the test of time. Adds a professional quality appearance on every game day. Optional installation tool and UV resistant cable ties available.

332F106	100' Length	\$198
332F256	250' Length	\$284
332F3	Installation Tool	\$71
332F4	21" Cable Ties, Set of 100	\$47



RAIL PADDING

8' long pads are polyethylene foam with colored vinyl coating. UV, weather and rot resistant pads are pre-split for easy installation. Fits over any 2 1/8" diameter or less pipe.

35901	Light Blue	\$44
35903	Red	\$44
35906	Yellow	\$44
35909	Gray	\$44
35912	Black	\$44
35913	Navy	\$44
35914	Green	\$44



FENCE PADDING KIT

Designed to pad the top rail of woven wire fence and minimize injuries to players during outdoor activities.

Pads consist of shock absorbing, closed cell weather resistant polyethylene foam and a polyester reinforced cover with grommets and durable nylon, self-locking type wire ties. Kit is provided in 9 slit sections of 3 1/2" O.D. x 2" I.D. foam in 28" lengths. The cover is one 20' section, which may be easily cut to provide custom lengths when required. Standard is yellow, available in 14 colors.

003581XX	20' Padding	\$414
-----------------	-------------	--------------

Vinyl

01	02	03	04	05	06	08	09	10	11	12	13	14	15
LIGHT BLUE	ROYAL BLUE	RED	WHITE	ORANGE	YELLOW GOLD	TAN	GRAY	MAROON	PURPLE	BLACK	NAVY BLUE	KELLY GREEN	DARK GREEN

Use the two-digit number of your color selection to replace XX in the item number.

WINDSCREENS



TUFFY® WINDSCREENS

Screens are made with an exclusive durable mesh fabric of tightly woven micro-fibers: it's virtually tear-proof. Tuffy® is the only windscreen finished with double-needle lock stitching, eliminating the thread unraveling problem of traditional windscreens. Includes 5 year warranty, available in 20 colors. Grommets every 12". 78% Shading. Custom Printing available - call for details.

912014	Tuffy® 4' Windscreen, Per Linear Foot	\$6.25/ln ft
912015	Tuffy® 5' Windscreen, Per Linear Foot	\$6.25/ln ft
912016	Tuffy® 6' Windscreen, Per Linear Foot	\$7.25/ln ft
912019	Tuffy® 9' Windscreen, Per Linear Foot	\$9.25/ln ft
912065	6' x 5' Ballasted Tuffy® 9' Windscreen	\$133/ea

AER-FLO VCP® WINDSCREENS

Made for 8 oz. vinyl coated polyester mesh with double lock-switch sewn ends/corners. Grommets every 12"; available in Black, Dark Green, Navy, Royal Blue, Red, or Maroon. Includes 2 year warranty. 70% shade. Custom printing available - call for details.

912026	VCP 6' Windscreen, Per Linear Foot	\$5.25/ln ft
912029	VCP 9' Windscreen, Per Linear Foot	\$9.00/ln ft

LENO WINDSCREENS

Made of leno polypropylene mesh. Reinforcing threads resist tearing, features ultraviolet and mildew inhibitors. Allows 15% wind passage; popular in high wind areas. Available in Dark Green, Black, or Royal, printing not available on this fabric.

912036	LENO 6' Windscreen, Per Linear Foot	\$6.25/ln ft
912039	LENO 9' Windscreen, Per Linear Foot	\$9.75/ln ft

CLOSED MESH POLY WINDSCREENS

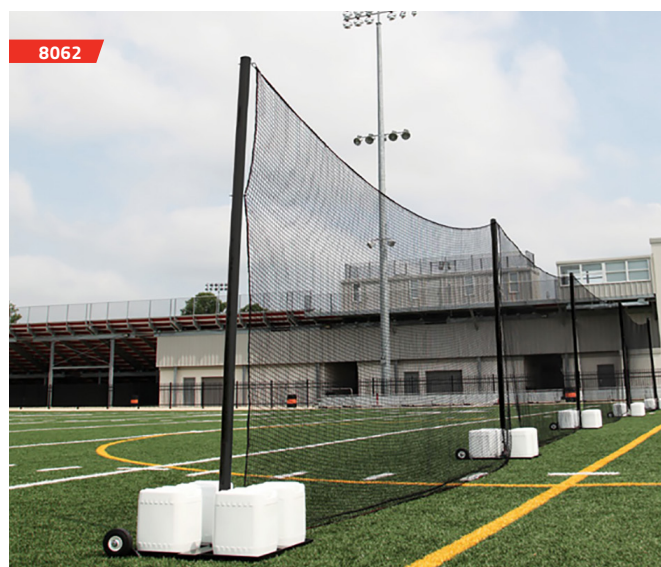
Allowing only 8% wind passage, this screen has both high wind blockage and high visual blockage properties. Heavyweight polypropylene fabric is treated for UV, mildew, and insect resistance. Available in Dark Green or Black, grommets every 18". Air vents and tie downs are recommended. Printing not available on this fabric.

912046	6' Poly Closed Mesh Windscreen, Per Linear Foot	\$6.50/ln ft
912049	9' Poly Closed Mesh Windscreen, Per Linear Foot	\$11.00/ln ft

CLOSED MESH POLY WINDSCREENS

912051	Homerun Zone Windscreen Topper, Per Linear Foot	\$1.75/ln ft
912071	Hemmed Windscreen 6" x 12" Window	\$9.25/ea
912081	Rectangular Windscreen 6" x 12" Air Vent	\$9.25/ea

BALLSTOPS



CUSTOMIZABLE

Powder Coat



12' - 40' TALL BALLSTOP SYSTEMS

- 12', 15' and 20' use 4" diameter, $\frac{1}{8}$ " wall aluminum tube - #504 knotless netting
- 25' and 30' use 6" Sch 40 aluminum tube - #36 knotted netting
- 35' and 40' use 6" Sch 40 steel tube - #36 knotted netting
- All Poles 12'-40' have a vertical support cable for additional net support
- Ground sleeves included
- All poles are now powder coated in architectural black - Other colors available for an additional cost**
- 5 Year Warranty**

739012	12' Ball Stop; Straight Pole Starter (20' x 12')	\$1555
732012A	12' Ball Stop; Straight Pole Add-On (20' x 12')	\$887
739015	15' Ball Stop; Straight Pole Starter (20' x 15')	\$1675
739015A	15' Ball Stop; Straight Pole Add-On (20' x 15')	\$951
739120	20' Ball Stop; Offset Pole Starter (20' x 20')	\$1850
739120A	20' Ball Stop; Offset Pole Add-On (20' x 20')	\$1125
739020	20' Ball Stop; Straight Pole Starter (20' x 20')	\$1770
739020A	20' Ball Stop; Straight Pole Add-On (20' x 20')	\$1085
739025	25' Ball Stop; Straight Pole Starter (20' x 25')	\$4505
739025A	25' Ball Stop; Straight Pole Add-On (20' x 25')	\$2610
739030	30' Ball Stop; Straight Pole Starter (20' x 30')	\$4955
739030A	30' Ball Stop; Straight Pole Add-On (20' x 30')	\$2890
739035	35' Ball Stop; Straight Pole Starter (20' x 35')	\$4925
739035A	35' Ball Stop; Straight Pole Add-On (20' x 35')	\$2900
739040	40' Ball Stop; Straight Pole Starter (20' x 40')	\$5605
739040A	40' Ball Stop; Straight Pole Add-On (20' x 40')	\$3310

10' TALL BALLSTOP SYSTEMS

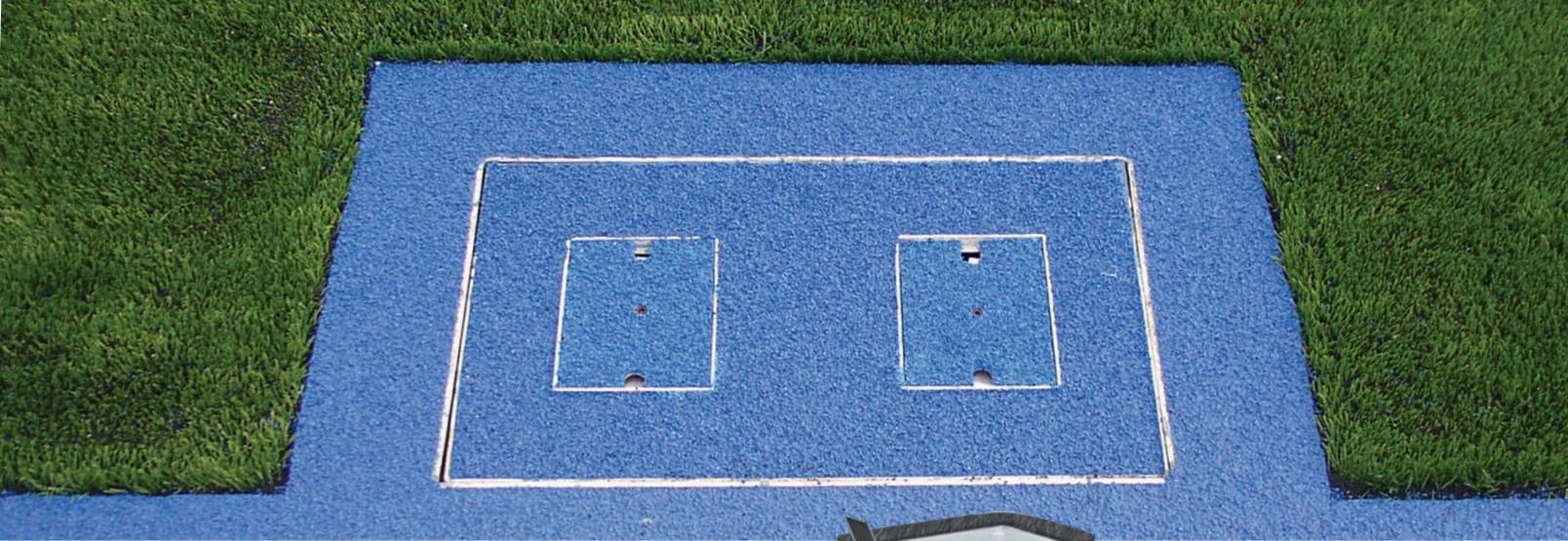
The 10' Tall Ballstop Systems were designed to be set up and removed as needed and are available as above ground or in ground installation.

- Net: #504 Weather treated $1\frac{3}{16}$ " square mesh with $\frac{1}{4}$ " roped edge and 180 lb break strength
- Net is supported at the top and held in place at the bottom by $\frac{1}{8}$ " vinyl covered steel cable
- The 8062 is a portable system which uses a platform base with wheels that is weighted down by four 5 gallon jugs (included)
- The 807 is installed in aluminum ground sleeves (caps are included for use when poles are removed)
- Purchase one starter unit and as many additional units as needed to reach your desired overall length (Sold in 20' lengths)**
- All poles are now powder coated in architectural black - Other colors available for an additional cost**
- 5 Year Warranty**

8062	Portable Starter Unit (10' x 20')	\$1875
8062A	Portable Additional Unit (10' x 20')	\$1095
807	Sleeved Starter Unit (10' x 20')	\$616
807A	Sleeved Additional Unit (10' x 20')	\$443



On all Gill Ballstops
Call for Details.



VERSACOM BOXES

CONNECTING IT ALL TOGETHER

The *VersaCom Box* provides a junction for electricity and cable hookups. This box can be put in virtually any location around performance areas of varying surfaces. The open bottom of the VersaCom Box provides adequate drainage and conduit entry, while the hand holes in the cover allow easy access.

- Divider plates in full size version, provided to help keep electrical equipment segregated
- Main box structure is made of 1/4" thick folded aluminum
- Lid is constructed of 1/4" aluminum plates for maximum support and durability

The *VersaCom Box - Turf Version* features factory installed turf infill retainment brushes keep infill out of the box. A supplied aluminum top allows artificial turf to be glued on the jobsite, and is tethered to the box. This top is reinforced with multiple aluminum plates for maximum strength and durability.

The *VersaCom Box - Synthetic Version* allows material to be bonded or poured onto the top of the lid to match the surrounding surface. The F91033 and F93033 versions have black Vultrak bonded to the lid. This addition is usually for asphalt applications (this material can also be painted).



SOLD SEPARATELY

VERSACOM RISER

The VersaCom Riser has the same dimensions as a full-size VersaCom Box. The riser attaches to the bottom creating a box that is twice as deep.

F90010 *Versacom Riser* **\$499**

VERSACOM BOXES		FULL SIZE 30" L x 18" W x 14" D		HALF SIZE 15" L x 18" W x 14" D	
SYNTHETIC VERSIONS	<i>Synthetic</i>	F910	\$969	F930	\$669
	<i>Black Vultrak (Factory Installed)</i>	F91033	\$1149	F93033	\$789
TURF VERSION	<i>Turf</i>	F960	\$879	F970	\$699

BENCHES & BLEACHERS

Benches are aluminum planking attached to heavy steel support frames. Benchseat is 10" wide and available with a powder-coat finish. Seats are 1'6" high and include back support.

- Non-Slip, Grooved Type Top Surface With Reinforcing Ribs
- 10" Wide Aluminum Alloy Planks
- Galvanized Structural Steel Support Frames
- Plank Ends Are Fitted With Die-Cut Formed Caps

ALUMINUM BENCHES WITH SHELF

74081	8' Bench, Aluminum Finish	\$942
74081CXX	8' Bench, Powder Coat	\$996
74161	16' Bench, Aluminum Finish	\$1565
74161CXX	16' Bench, Powder Coat	\$1725



74081



72081



74041C15

ALUMINUM BENCHES

Portable Benches

72081	8' Bench, Aluminum Finish	\$329
72081CXX	8' Bench, Powder Coat	\$360
72161	16' Bench, Aluminum Finish	\$494
72161CXX	16' Bench, Powder Coat	\$535

Stationary (Ground Sleeve) Benches

72082	8' Bench, Aluminum Finish	\$235
72082CXX	8' Bench, Powder Coat	\$259
72162	16' Bench, Aluminum Finish	\$364
72162CXX	16' Bench, Powder Coat	\$396

ALUMINUM BENCHES WITH BACKREST

Portable Benches

74041C15	4' Tennis Bench, Powder Coat	\$375
73081	8' Bench, Aluminum Finish	\$504
73081CXX	8' Bench, Powder Coat	\$556
73161	16' Bench, Powder Coat	\$814
73161CXX	16' Bench, Powder Coat	\$899

Stationary (Ground Sleeve) Benches

73082	8' Bench, Aluminum Finish	\$471
73082CXX	8' Bench, Powder Coat	\$514
73162	16' Bench, Aluminum Finish	\$814
73162CXX	16' Bench, Powder Coat	\$889

CUSTOMIZABLE



*To specify color with order, use the two-digit number of your color selection to replace XX in the item number.



ALUMINUM STATIONARY OUTDOOR BLEACHERS

- Non-Slip, Grooved Type Top Surface With Reinforcing Ribs
- 10" Wide Aluminum Alloy Planks
- Galvanized Structural Steel Support Frames
- Plank Ends Are Fitted With Die-Cut Formed Caps



381083	8' Long, 3 Row	\$968
381084	8' Long, 4 Row	\$1230
381085	8' Long, 5 Row	\$1515
381163	16' Long, 3 Row	\$1640
381164	16' Long, 4 Row	\$2020
381165	16' Long, 5 Row	\$2555



ALUMINUM TIP & ROLL INDOOR BLEACHERS

Set up seating wherever you need it. When spectator viewing space is at a minimum, the Tip & Roll seating system is a must. The hardy bleachers use the same sturdy construction as the outdoor models.

- Non-Marking 4" Swivel Casters
- Bi-Directional Model Ideal Between Two Fields
- Easy To Transport

379283	8' Long, 3 Row	\$1385
379163	16' Long, 3 Row	\$2290



SHELTERS



PORTABLE TRACK SHELTER

Steel frame is mounted on swivel casters. 360 degree seating surrounds a center storage shelf. Roof frame is constructed of aluminum bracing with architectural gray powder coat. Canopy is tensioned with a one-piece vinyl wrap. Custom color and graphic application available on canopy top.

54240CXXSP

Portable Track Shelter with Graphics

\$5000

Vinyl



Use the two-digit number of your color selection to replace XX in the item number.



PREMIER SOCCER SHELTER

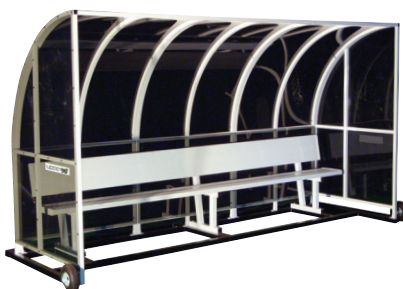
12' wide x 6'4" deep x 7' high with seating for up to 14 players. Elevated floors and tinted polycarbonate panels protect you from the elements. Removable padded marine grade seat covers come in a wide variety of standard colors.

- Gray powder coated aluminum frame
- Optional wheel kit and soft side panels
- 3 Year Limited Warranty

542212XX 12' Bench \$11875

54220000 Wheel Kit (1) \$1020

542200XX Side Panel (1) \$779



ESSENTIAL SOCCER SHELTER

6'10" high x 4'8" deep team shelter. Aluminum construction with tinted polycarbonate panels on the sides and back. Clear anodized or powder coated aluminum bench seat with back.

- Includes 8.5" Rubber wheels & anchors
- European styling
- 3 Year Limited Warranty

542108XX 8' Bench \$3780

542112XX 12' Bench \$4775

542116XX 16' Bench \$7020

542120XX 20' Bench \$8700

542124XX 24' Bench \$10075

CUSTOM COLOR

See Powder coat chart on pg. 50 to replace XX in the item number



PRESS TOWER

Multi-use tower can be used for coaching, filming, press and media. Non-skid decking. 5'9" platform height. 4' x 10'6" platform size with an overall size of 7' x 10'6". Anodized aluminum bench with back moves forward and back. 16" pneumatic wheels – two locking and two swivel wheels. Optional side curtain for inclement weather.

- Weather resistant top cover available in colors
- Heavy duty aluminum construction
- 3 Year Limited Warranty

542359XX Press Tower \$15900

542300XX Removeable Side Curtain \$1515

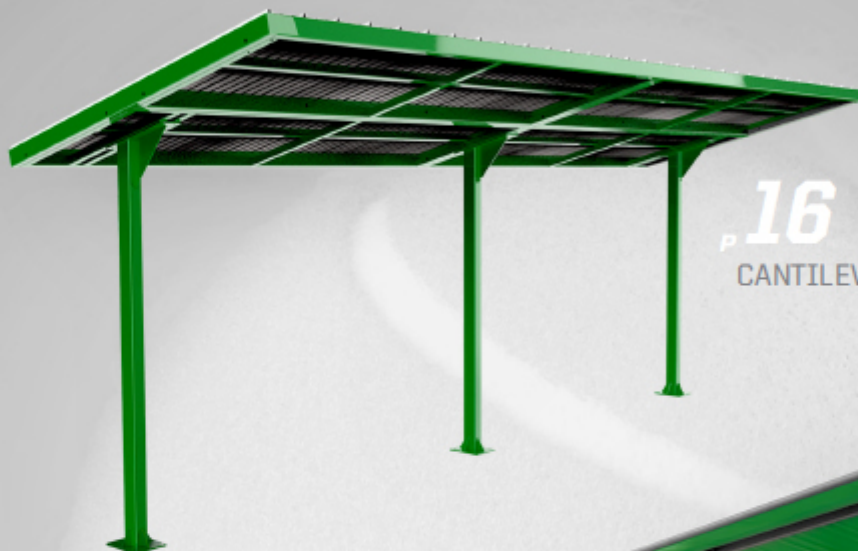
54230000 Towing Kit \$503

CUSTOM COLOR

See vinyl color chart above to replace the XX in the item number

MORE THAN TRACK & FIELD

Your preferred source for track & field equipment is also your source for tennis shelters, windscreens and more.



p 16

CANTILEVER DUGOUT

p 50

TENNIS BENCH



p 52

PORTABLE SHELTER

GILL
ATHLETICS

***Quality.
Dependability.
Superiority.***

Harry L Gill



Since 1918, Gill Athletics® has been equipping coaches with innovative equipment that elevates the sport and performance of track athletes across the globe.

Ph: 614-831-1792 / Email: inquiries@sas-athletics.com / Web: www.SAS-Athletics.com