

***Quality.
Dependability.
Superiority.***

Harry L. Gill



Since 1918, Gill Athletics® has been equipping coaches with innovative equipment that elevates the sport and performance of track athletes across the globe.

Ph: 614-831-1792 / Email: inquiries@sas-athletics.com / Web: www.SAS-Athletics.com

WHAT'S INSIDE



2019 Litan Sports Group, Inc. Gill Athletics, PowerMax, Pacer are all registered trademarks of Gill Athletics, Inc. Gill Essentials, Maximus, SafetyMax, AGX, Pacer One, PacerFXV, Pacer Composite, Continuum, Fusion, Carbon 1, Hollowood Star, Orbiter, OTE, Tru-Flight, T2-Fiber, Tufmesh Plus, Duralife, Track Wagon are all trademarks of Gill Athletics, Inc. NCAA is a registered trademark of The National Collegiate Athletic Association.

02 JUMPS

- 02 Landing Systems
- 08 Standards
- 12 Box Collars, Base Pads & Platforms
- 14 Raised Runways & Pit Garages
- 16 Crossbars & Accessories
- 18 Vaulting Poles
- 24 Vault Accessories

26 SPRINTS & HURDLES

- 26 Starting Blocks
- 30 Hurdles
- 33 Hurdle Accessories

34 THROWS

- 34 Discus
- 36 Hammers & Shots
- 38 Throw Training & Accessories
- 40 Javelins

47 MEETS

- 47 Implement Accessories
- 48 Displays
- 50 Measuring Devices & Cameras
- 52 Track Accessories & Maintenance
- 58 Cross Country & Impact Tents

60 TRAINING

- 60 Plyometrics
- 62 Agility Training
- 64 Speed Development
- 67 Core Strength
- 68 Bodyweight Training
- 70 Weight Bars & Plates
- 72 Jump Training & Testing
- 74 Flexibility & Rehab

76 FACILITIES

- 76 Takeoff Boards & Curbing
- 78 Sand Pit Forms & Covers
- 80 Steeplechase
- 82 Vault Boxes & Implement Barriers
- 84 Circles & Toeboards
- 86 Discus & Shot Cages
- 92 Hammer Cages
- 98 VersaCom Boxes & Track Shelter
- 100 Ballstops

CHECK OUT OUR GREAT **NEW** PRODUCTS

Featured here and online at: www.GILLATHLETICS.com / **TheFutureIsHere**

Prices effective from October 1, 2018 through September 30, 2019

LANDING SYSTEMS

For over 100 years, Gill Athletics has been the leader of innovation in the sport of track & field. Our pole vault and high jump landing systems are engineered by collegiate athletes, professionals and coaches. We are honored that the NCAA® and NFHS® have both partnered with us as we work together to elevate each athlete's journey and deliver a first-class experience.



SIDE CARABINER CONNECTION:

Top Pad is connected to base pads with carabiner side attachments, eliminating any obstruction on top of the pit. This exclusive attention to detail provides an obstruction-free landing area with athletes' safety in mind.



OPTIMAL PIT ENTRY ANGLE:

An ASTM approved vault box collar changes the slope of the tri-slant area when vaulting poles rotate. Gill's thoughtful pit entry design accounts for the box collar's effect by featuring a vaulter friendly angle.

GILL LANDING SYSTEMS FEATURES*

Top Pads

EDGE-TO-EDGE TOP PAD: Aesthetic and functional design eliminates spike contact with base units and unevenness at the edge of the pit. This Gill exclusive feature will increase the life of your new pit and improve safety near the edges.

TUFMESH PLUS™ CASING: Using exclusive 17 x 11 1000 denier material increases the life of your top pad and stands up to repeated use better than any other on the market.

2" DURALIFE™ FOAM: Soft and durable foam creates confidence in every practice. Coaches can teach with assurance because of this industry leading design.

V-LOOP VINYL STRAP: Designed to evenly distribute the force from the athlete's landing, V-Loop straps eliminate tears compared to traditionally designed pits that put undue stress on the seams.

REVERSIBLE: Extend the life of your pit, Gill's top pads are designed to use either side safely and easily.

Vinyl Base Units

ALL-VINYL BASE: Exclusive to Gill landing systems, this unique design keeps water out of your pit better than old-school mesh top units used by the competition. To extend the life of your pit you keep water out of the foam. Gill's all-vinyl design gets results.

COMPLETE INTERCHANGEABILITY: Reversible sections for maximum interchangeability. This adds years to the life of your pit by maximizing the usage and size of the athlete's landing area.

QUADRUPLE DURALIFE LAYER FOAM: Athletes need to know they are landing safely and comfortably. Gill's new QUADRUPLE Duralife foam is 25% softer than others yet with firmness necessary for the safest landings.

DUAL COATED VINYL: Evenly distributed 1000 x 1000 denier polyester fabric is bonded on both sides with 18oz knife-coated PVC vinyl. This exclusive fabric design eliminates vinyl delamination seen in other pits after years of use. This creates the most durable casing on the market that is lighter than the other pits.

STITCHING: Gill's entire landing system is stitched with the industry's strongest 210 bonded polyester thread. Simply put, your new Gill pit comes triple stitched with the toughest thread in the industry to hold up to high volume practices.

GRIP STRIP FASTENING SYSTEM: A pit is safest when constructed as an integrated system. Gill's Grip Strip Fastening System will keep your base sections functioning as one unit season after season.

ECO-SMART COMPRESS PACKS: Gill Athletics cares about the environment and your budget. All landing systems are expertly packed and shipped utilizing Compress-Pack shipping, reducing freight volume lowering fuel consumption and shipping costs. Pits restore to original size and shape minutes after unpacking.

12 YEAR WARRANTY: A long-term warranty is only as dependable as the company standing behind it. And after 100 years, you can count on Gill to stand behind your landing system for years to come. If any failure occurs in the first 12 years, under normal use and care, we will repair or replace the damaged part. Essentials line includes 5 year warranty.

CUSTOM COLOR AND GRAPHICS: Choose from over 100 unique vinyl casing and top pad color combinations offered at NO EXTRA CHARGE! Select your vinyl casing (xx) and top pad (yy) color combination. Add distinction with multi-color graphics on the top pad, weather cover, or both.

**Features May Exclude Essentials Systems*

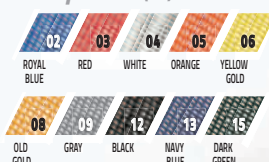


CUSTOMIZABLE LANDING SYSTEMS

Casing (XX)



Top Pad (YY)



CUSTOM GRAPHIC PRINTING

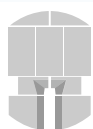
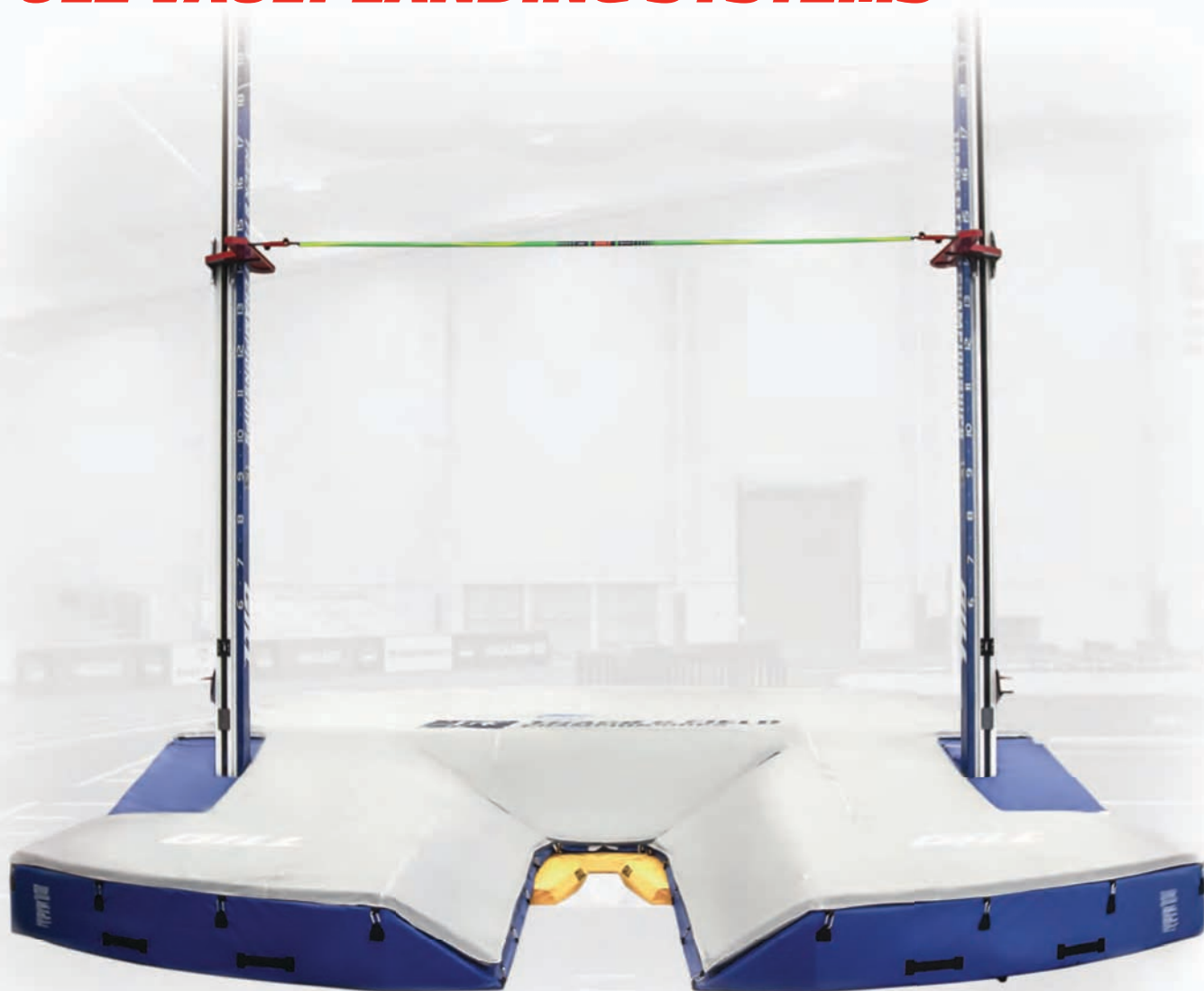
Add logo or school name to any landing system top pad or weather cover. Multi-color graphic is screen printed on 5' x 5' area. **Vector artwork must be provided.**

9451 Top Pad Graphic \$1040

9452 Weather Cover Graphic \$1040

To specify color with order, use the two-digit number of your color selection to replace XX & YY in the item number.

POLE VAULT LANDING SYSTEMS



OFFICIAL EQUIPMENT SUPPLIER TO THE
2019 TRACK & FIELD CHAMPIONSHIPS

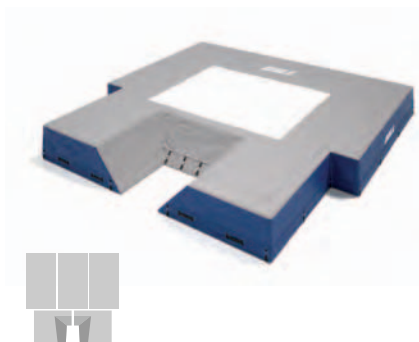
AGX M4 PV LANDING SYSTEM

- 21' 6" x 31' 2" x 32" // 6.55m x 9.50m x 0.81m
- 2" Top Pad
- 21' in back of the vault box
- Meets IAAF, NCAA and NFHS specifications
- 12 year warranty

66817CXXYY Landing System  \$27830

6681702CXX Weather Cover \$2600





ESSENTIALS™ PV LANDING SYSTEM

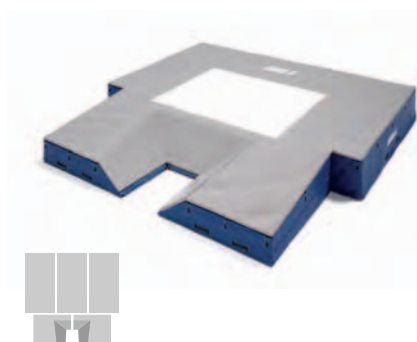
- 19' 9" x 20' 2" x 26" // 6.02m x 6.15m x 0.66m
- Skirted Mesh Top Holds Unit in Place
- Royal blue vinyl with gray top pad only
- *Meets NFHS specifications*
- 5 year warranty

653 Landing System **\$11415**

65302 Weather Cover **\$1300**

VP300 Essentials PV Valuepack **\$14415**

INCLUDED: Essentials PV System, Weather Cover, 7100 Essentials PV Standards, 61517CXX Base Pads, 523 Essentials PV Crossbar



S1 PV LANDING SYSTEM

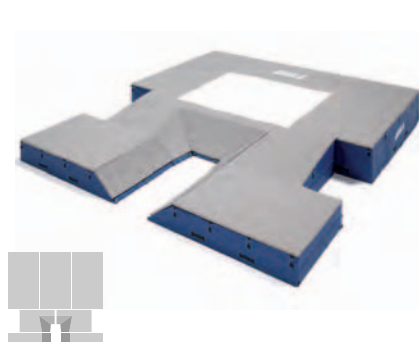
- 20' x 20' 2.5" x 28" // 6.1m x 6.16m x 0.71m
- 2" Top Pad
- 16' 7" in back of the vault box
- *Meets NFHS specifications*
- 12 year warranty

65417CXXYY Landing System **\$15060**

6541702CXX Weather Cover **\$1625**

VP65417CXXYY S1 PV Valuepack **\$18905**

INCLUDED: S1 PV System, Weather Cover, 77100 Scholastic PV Standards, 61517CXX Base Pads, 523 Essentials PV Crossbar



S4 PV LANDING SYSTEM

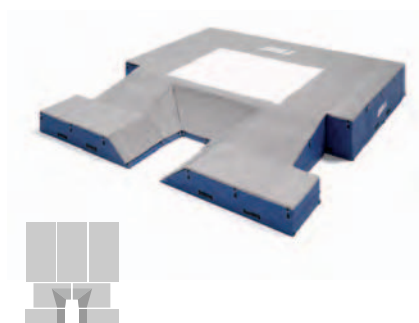
- 21' 6" x 24' x 28" // 6.55m x 7.32m x 0.71m
- 2" Top Pad
- 16' 7" in back of the vault box
- *Meets NFHS specifications*
- 12 year warranty

65817CXXYY Landing System **\$18715**

6581702CXX Weather Cover **\$1925**

VP65817CXXYY S4 PV Valuepack **\$22740**

INCLUDED: S4 PV System, Weather Cover, 77100 Scholastic PV Standards, 61517CXX Base Pads, 523 Essentials PV Crossbar



G1 PV LANDING SYSTEM

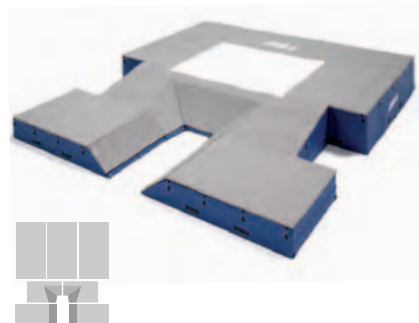
- 20' x 21' 11" x 32" // 6.10m x 6.68m x 0.81m
- 2" Top Pad
- 16' 7" in back of the vault box
- *Meets NCAA and NFHS specifications*
- 12 year warranty

66217CXXYY Landing System **\$18950**

6621702CXX Weather Cover **\$1980**

VP66217CXXYY G1 PV Valuepack **\$26125**

INCLUDED: G1 PV System, Weather Cover, 77200C12 Collegiate PV Standards, 61617CXX Base Pads, 526 Gill Collegiate PV Crossbar

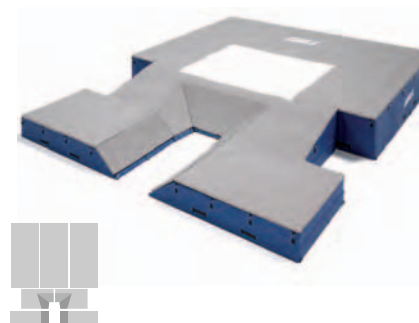


G4 PV LANDING SYSTEM

- 21' 6" x 24' x 32" // 6.55m x 7.32m x 0.81m
- 2" Top Pad
- 16' 7" in back of the vault box
- *Meets NCAA and NFHS specifications*
- 12 year warranty

66317CXXYY Landing System **\$20930**

6631702CXX Weather Cover **\$2165**



G6 PV LANDING SYSTEM

- 21' 6" x 27' x 32" // 6.55m x 8.23m x 0.81m
- 2" Top Pad
- 19' 7" in back of the vault box
- *Meets IAAF, NCAA and NFHS specifications*
- 12 year warranty

66517CXXYY Landing System  **\$23090**

6651702CXX Weather Cover **\$2385**

DOUBLE FRONT SYSTEMS

Available on G4, G6, and AGX M4.
Call for Details.



CUSTOMIZABLE SYSTEMS

See color charts on page 3 to replace
the XX and YY in the item numbers.



On all Gill Landing Systems*
Call for Details.

*Excludes Essentials. 5 Year Warranty on Essentials.

HIGH JUMP LANDING SYSTEMS

G4 HJ LANDING SYSTEM

- 20' x 13' 2" x 28" // 6.10m x 4.01m x 0.71m
- 2" Top pad
- Added safety cutout
- Meets IAAF, NCAA and NFHS specifications
- 12 year warranty



64417CXXYY Landing System  \$9850

6441702CXX Weather Cover \$1460



OFFICIAL EQUIPMENT SUPPLIER TO THE
2019 TRACK & FIELD CHAMPIONSHIPS

AGX M4 HJ LANDING SYSTEM

- 27' 2" x 13' 2" x 28" // 8.29m x 4.01m x 0.71m
- 2" Top pad
- Added safety cutout
- Meets IAAF, NCAA and NFHS specifications
- 12 year warranty



64817CXXYY Landing System  \$13020

6481702CXX Weather Cover \$1665



ESSENTIALS™ HJ LANDING SYSTEM

- 16' x 8" x 24" // 4.88m x 2.44m x 0.61m
- Skirted mesh top holds unit in place
- Royal blue vinyl with gray top pad only
- *Meets NFHS specifications*
- *5 year warranty*

640A Landing System **\$4090**

640A02 Weather Cover **\$644**

VP405 Essentials HJ Valuepack **\$5005**

INCLUDED: Essentials HJ System, Weather Cover, 700 Essentials HJ Standards, 522 Essentials HJ Crossbar



S1 HJ LANDING SYSTEM

- 16'6" x 8' x 26" // 5.03m x 2.44m x 0.66m
- 2" Top pad
- *Meets NFHS specifications*
- *12 year warranty*

64117CXXYY Landing System **\$5675**

6411702CXX Weather Cover **\$863**

VP64117CXXYY S1 HJ Valuepack **\$7085**

INCLUDED: S1 HJ System, Weather Cover, 78100 Scholastic HJ Standards, 522 Essentials HJ Crossbar



S4 HJ LANDING SYSTEM

- 16' 6" x 10' x 26" // 5.03m x 3.05m x 0.66m
- 2" Top pad
- Added safety cutout
- *Meets NCAA and NFHS specifications*
- *12 year warranty*

64217CXXYY Landing System **\$7170**

6421702CXX Weather Cover **\$1085**

VP64217CXXYY S4 HJ Valuepack **\$8750**

INCLUDED: S4 HJ System, Weather Cover, 78100 Scholastic HJ Standards, 522 Essentials HJ Crossbar



G1 HJ LANDING SYSTEM

- 18' x 10' x 26" // 5.49m x 3.05m x 0.66m
- 2" Top pad
- Added safety cutout
- *Meets IAAF, NCAA and NFHS specifications*
- *12 year warranty*

64617CXXYY Landing System **\$8115**

6461702CXX Weather Cover **\$1460**

VP64617CXXYY G1 HJ Valuepack **\$10650**

INCLUDED: G1 HJ System, Weather Cover, 78200C12 Collegiate HJ Standards, 525 Gill Collegiate HJ Crossbar



CUSTOMIZABLE SYSTEMS

See color charts on page 3 to replace the XX and YY in the item numbers.



On all Gill Landing Systems*
Call for Details.

*Excludes Essentials

POLE VAULT STANDARDS



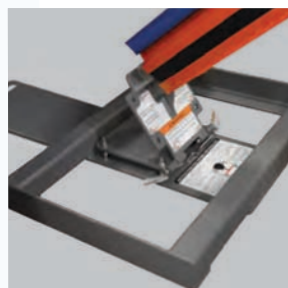
OFFICIAL EQUIPMENT SUPPLIER TO THE
2019 TRACK & FIELD CHAMPIONSHIPS

AGX M4 POLE VAULT STANDARDS

- Dual hand crank system simplifies and speeds up height transitions
- Height range from 6' 6" to 21'
- Exclusive 2" safety pad increases safety of athletes and reduces vaulting pole damage
- Dual positional locking system; Practice Mode creates quick bar height changes while Competition Mode locks in peg height during jumps
- Internal measuring tape displays Metric and English units
- Quick hand crank crossbar depth adjustment from 0cm to 80cm
- Exclusive customizable offset width between pins from 4.30m-4.37m
- Steel base for stability during use and Easy-Port hinge technology for quicker location movement
- Strong aluminum profile increases aesthetics, functionality, and customization
- Customize 2" safety pad with choice of color and graphics
- Use the two-digit number of your vinyl color selection to replace XX in the item number
- Use the two-digit number of your powder coat color selection to replace YY in the item number
- Meets NFHS, NCAA, and IAAF specifications
- 10 year warranty

740110CXXYYSP

\$19760/pr



NEW



NEW MANUAL
DEPTH ADJUSTMENTS

MANUAL AGX POLE VAULT STANDARDS

- Includes high-end features from the AGX M4 Standard except with manual depth adjustments
- Meets NFHS, NCAA, and IAAF specifications
- 10 year warranty

77300CXXYYSP

\$12500/pr

Vinyl



Powder Coat



*Gray and Black powder coat available in Gloss or Flat



On all Gill Standards®
Call for Details.

*Excludes Essentials. 5 Year Warranty on Essentials.


NEW

77200C02

COLLEGIATE POLE VAULT STANDARDS

- Constructed of heavy duty aluminum uprights and risers with custom glide parts for smooth operation
- Weighted steel base includes leveling feet and wheels for easy mobility
- Clamping mechanism pulls upright and riser together to hold desired height
- Height adjustment: 7' to 21' with adjustable height readout window display
- Reads both English and Metric measurements
- 75mm bar rest pins and 8 base anchors included
- *Meets NFHS, NCAA, and IAAF specifications*
- *10 year warranty*

77200CXX \$4200/pr

NEW

SCHOLASTIC POLE VAULT STANDARDS

- Constructed of heavy duty aluminum uprights and risers with custom glide parts for smooth operation
- Weighted steel base includes wheels for easy mobility
- Clamping mechanism pulls upright and riser together to hold desired height
- Height adjustment: 7' to 18'
- Reads both English and Metric measurements
- *Meets NFHS and NCAA specifications*
- *10 year warranty*

77100 \$1700/pr


ESSENTIALS™ POLE VAULT STANDARDS

- Full steel tubing construction gives added strength
- Height adjustment: 6' to 16'
- Reads both English and Metric measurements
- Upright detaches from base rails for improved storage
- Wide stance base for added stability
- 75mm bar rest pins and 8 base anchors included
- *Meets NFHS specifications*
- *5 year warranty*

7100 \$1040/pr

PV STANDARD UPRIGHT PAD

- Protects competitors, pole, and standards from harm
- Fits snug around the standard facing the inside of the pit
- Open back allows for setting of height and tightening of knobs
- High density foam in vinyl casing
- Customizable Color

731109CXX \$363/ea


OFFSET EXTENSION

- 71252 adds additional 2' to Gill standards: 77100 and 77200CXX
- 71253 adds additional 4' to Gill standards: 77100 and 77200CXX
- Fits any standards with 1.25" square offsets
- Comes in safety orange color

71252 \$103/pr
71253 \$228/pr


71252 Shown

REPLACEMENT BAR REST PINS

P71430 55mm NCAA Pin \$12/ea
P71429 75mm HS Pin \$12/ea

REPLACEMENT CONCRETE ANCHORS

- Required by NFHS rule 7-5-10
- Set of 8

7115 \$66

HIGH JUMP STANDARDS

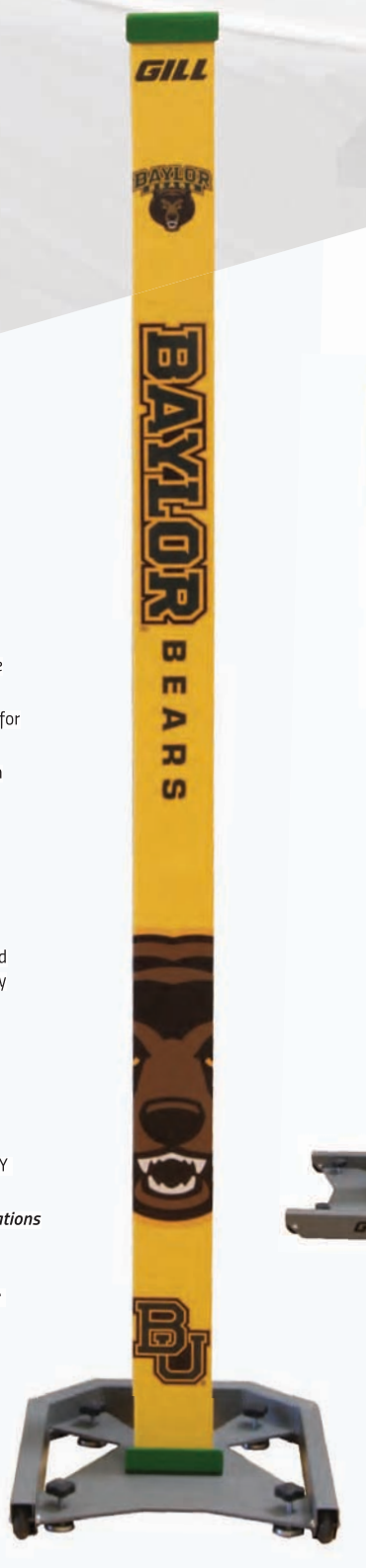


OFFICIAL EQUIPMENT SUPPLIER TO THE
2019 TRACK & FIELD CHAMPIONSHIPS

AGX M4 HIGH JUMP STANDARDS

- Simple height adjustments with unique thumb button and handle assist
- Choose your team's powder coat color for complete customization
- Customize exclusive 2" safety pad with choice of color and graphics
- High-visible English or Metric unit height indicator display for fans, coaches, and athletes
- Eye-level height indicator color coordinated with dual bar rest system
- Exclusive steel powder coated weighted base with wheels for increased stability and easy transportation
- Height range from 1' to 8' 3"
- Use the two-digit number of your vinyl color selection to replace XX in the item number
- Use the two-digit number of your powder coat color selection to replace YY in the item number
- Meets NFHS, NCAA, and IAAF specifications
- 10 year warranty

740120CXXYYSP  \$2145/pr



M4 HIGH JUMP BASE PADS

Specifically designed for AGX M4 High Jump Standards.

- Use the two-digit number of your vinyl color selection to replace XX in the item number

708CXX \$268/pr

Vinyl

01	02	03	04	05	06	08
LIGHT BLUE	ROYAL BLUE	RED	WHITE	ORANGE	YELLOW GOLD	TAN
09	10	11	12	13	14	15
GRAY	MAROON	PURPLE	BLACK	NAVY BLUE	KELLY GREEN	DARK GREEN

Powder Coat

01	02	03	04	05	06	07	08
LIGHT BLUE	ROYAL BLUE	RED	WHITE	ORANGE	YELLOW GOLD	SILVER	OLD GOLD
09	10	11	12	13	14	15	
GRAY	MAROON	PURPLE	BLACK	NAVY BLUE	KELLY GREEN	DARK GREEN	

*Gray and Black powder coat available in Gloss or Flat



On all Gill Standards*
Call for Details.

*Excludes Essentials. 5 Year Warranty on Essentials.



NEW



NEW and Improved
Clamping Mechanism

78200C02 Shown

COLLEGIATE HIGH JUMP STANDARDS

- Constructed of heavy duty aluminum uprights and risers with custom glide parts for smooth operation
- Weighted steel base includes wheels for easy mobility and leveling feet
- Clamping mechanism pulls upright and riser together to hold desired height
- Height adjustment: 2'8" - 8'4" with adjustable height readout window display
- Reads both English and Metric measurements.
- Meets NFHS, IAAF, and NCAA specifications
- 10 year warranty

78200CXX \$1300/pr



NEW

SCHOLASTIC HIGH JUMP STANDARDS

- Constructed of heavy duty aluminum uprights and risers with custom glide parts for smooth operation
- Weighted steel base includes wheels for easy mobility
- Clamping mechanism pulls upright and riser together to hold desired height
- Height adjustment: 2' - 7'4"
- Reads both English and Metric measurements
- Meets NFHS and NCAA specifications
- 10 year warranty

78100 \$695/pr



ESSENTIALS™ HIGH JUMP STANDARDS

- Square steel construction with durable black powder coat finish
- Weighted base includes wheels for easy mobility
- Height adjustment: 2' to 8'
- Reads both English and Metric measurements
- Meets NFHS and NCAA specifications
- 5 year warranty

700 Standards \$353/pr

HIGH JUMP MULTI-BAR REST ATTACHMENT

- Eliminates need for time wasting raising and lowering of standards at practice
- Designed to fit most high jump standards
- Six bar rest pads at 3" increments
- 1 3/4" x 1 3/4" openings with a 22" overall length

71254 \$68/pr



HIGH JUMP STANDARD BASE PADS

- Provides additional safety during high jump event
- 2" thick foam pad encased in yellow vinyl

707 \$222/pr



ACCESSORIES & PADS

SAFETYMAX+™ VAULT BOX COLLAR

- Compatible with any style of landing system
- Spike Plate to reduce collar from slipping
- Complies with ASTM standard F2949
- Meets the 2014 NCAA and 2015 NFHS rule

719 SafetyMax+ Vault Box Collar \$588

71904 Spike Plate Kit \$197



VAULT PERIMETER PAD

- High school rule requires covering over all exposed hard surfaces surrounding the PV landing area
- 4' x 8' pad is 2" thick high density foam

716 \$282



STANDARD BASE PADS

- Fits 28" tall Gill systems and all standards with center-mounted uprights

61517CXX \$1035/pr



LANDING SYSTEM TIE-DOWN KIT

- Decrease the chances of pit 'flying' away
- Increase safety and security of your pits
- Straps sold individually for custom solution

7081 With Concrete Anchors \$50

7082 With Grass Anchors \$50



ANGLED BASE PADS

- Fits 32" tall Gill systems and all standards with center-mounted uprights
- Adjustable measurement scale on top of pad
- Meets IAAF specifications

61617CXX \$1695/pr



SLOPED MANUAL AGX BASE PADS

- Specifically designed for 77300CXXYYSP Manual AGX M4 Pole Vault Standards.

61817CXX \$1775/pr



SLOPED AGX M4 BASE PADS

- Specifically designed for 740110CXXYYSP AGX M4 Pole Vault Standards.

61717CXX \$1470/pr



CUSTOMIZABLE BASE PADS

See color charts on page 3 to replace the XX and YY in the item numbers.



ALUMINUM PIT CART

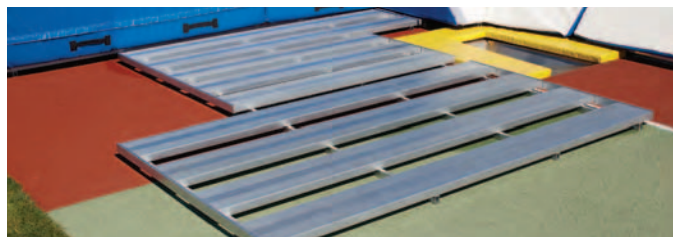
- Deck of cart measures 5' x 10'
- Constructed of quality aluminum planking
- Pneumatic caster wheels have a 12" diameter for easy travel over smooth and rough surfaces
- Deck height is optimal 19"

768 \$2570

WOOD DECK PIT CART

- Deck of cart measures 4' x 8'
- Constructed of MDO exterior plywood for improved weather resistance
- Pneumatic caster wheels have a 12" diameter for easy travel over smooth and rough surfaces
- Deck height is 16"

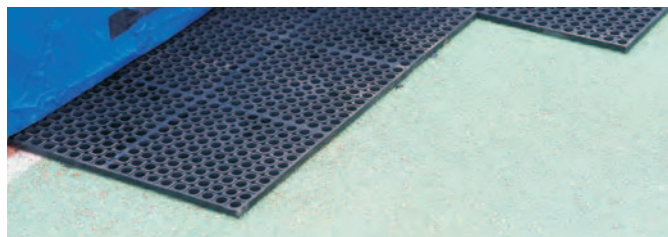
767 \$1275



ALUMINUM PLATFORMS FOR LANDING SYSTEMS

- Support PV and HJ pits above the ground to prevent water damage
- Corrosion resistant aluminum
- Consist of individual, easy to carry and convenient to store pallets
- Quickly assembled and disassembled

733641	Fits 64117 High Jump System	\$2455
733642	Fits 64217 High Jump System	\$2400
733644	Fits 64417 High Jump System	\$4785
733646	Fits 64617 High Jump System	\$2830
733648	Fits 64817 High Jump System	\$6865
733654	Fits 65417 Pole Vault System	\$5580
733662	Fits 66217 Pole Vault System	\$5720
733663	Fits 66317 and 65817 Pole Vault System	\$7180
733665	Fits 66517 Pole Vault System	\$7555
733668	Fits 66817 Pole Vault System	\$8320



POLYMER PLATFORMS FOR LANDING SYSTEMS

- Support PV and HJ pits above the ground to prevent water damage
- Corrosion resistant rubber that reduces the tendency of pit migration during use
- Consist of individual, easy to carry and convenient to store pieces
- Quickly assembled and disassembled

734641	Fits 64117 High Jump System	\$1740
734642	Fits 64217 High Jump System	\$2095
734644	Fits 64417 High Jump System	\$4265
734646	Fits 64617 High Jump System	\$2230
734648	Fits 64817 High Jump System	\$4650
734654	Fits 65417 Pole Vault System	\$4650
734662	Fits 66217 Pole Vault System	\$4785
734663	Fits 66317 and 65817 Pole Vault System	\$5785
734665	Fits 66517 Pole Vault System	\$6865
734668	Fits 66817 Pole Vault System	\$7280



WATER SHED INSERT

- Guaranteed to increase the life of your HJ and PV pits
- Prevents water pooling on your pit which destroys your foam

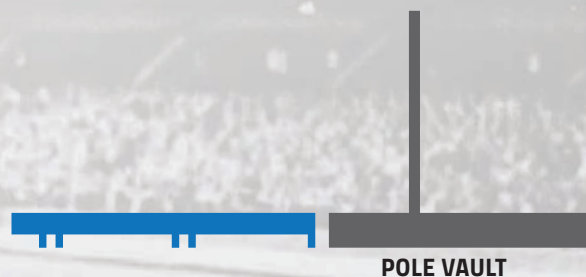
709 \$75

RAISED RUNWAYS

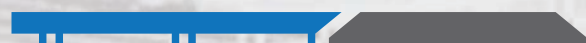
In the past, these types of runway systems have been priced upwards to \$75k! You can now have this product at a fraction of that price. The Gill Raised Runway allows for the flexibility to design runways that will accommodate the pole vault, long jump and triple jump for all levels of competition and practice.

The basic unit is an 8' x 4' general runway section. Specialized sections incorporate a vault box or take-off board trays and blanking lids. The construction of each section is welded aluminum, with ½" plywood decking. Track surfacing is not included, so you can have your preference on surfacing.

Adjunct products for the Raised Runway include the Soft Shell Sand Pit Form for the long and triple jump (sand not included), and a pole vault pit elevating system.



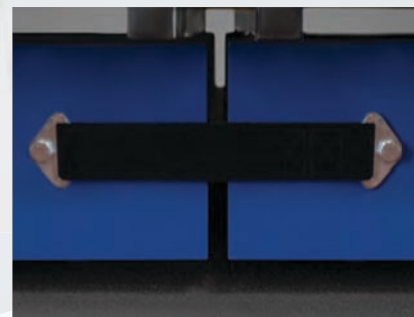
POLE VAULT



SAND PITS

CALL TODAY!

LET US HELP YOU PIECE TOGETHER THE **RAISED RUNWAY** SYSTEM THAT BEST FITS YOUR NEEDS.



CUSTOMIZABLE RUNWAY

Powder Coat

01	02	03	04	05	06	07	08
LIGHT BLUE	ROYAL BLUE	RED	WHITE	ORANGE	YELLOW GOLD	SILVER	OLD GOLD
09	10	11	12	13	14	15	
GRAY	MAROON	PURPLE	BLACK	NAVY BLUE	KELLY GREEN	DARK GREEN	

*Gray and Black powder coat available in Gloss or Flat

Gill Raised Runways are used at:
Kent State University, Marshall University,
Towson University, and Vanderbilt University.

PIT GARAGES



PIT GARAGES

- Protect your PV or HJ investment from the elements
- Keep rain, snow, and vandals away
- Easily moves on and off position with the help of a few people
- Use the two-digit number of your color selection to replace XX in the item number

881018CXX	10' X 18' Pits or Smaller	\$8975
881425CXX	14' X 25' Pits or Smaller	\$13440
882120CXX	21' X 20' Pits or Smaller	\$14040
883022CXX	30' X 22' Pits or Smaller	\$17250
GILLINSTALLHJG	High Jump Pit Garage Factory Installation	\$3350
GILLINSTALLPVG	Pole Vault Pit Garage Factory Installation	\$4450

COLORS



POLE VAULT



HIGH JUMP

OFFICIAL
PARTNER



OFFICIAL TRACK & FIELD
EQUIPMENT SUPPLIER

JUMPS

CROSSBARS

NEW

AGX™ COUNTERVAIL CROSSBARS

- Includes high-end features of the AGX Crossbar with added Countervail™ Vibration Cancelling Technology
- Countervail strengthens the crossbar creating minimal sag
- Dampens 40% quicker than other crossbars
- Meets NFHS, NCAA and IAAF specifications, IAAF certified



535	High Jump	IAAF	\$286
536	Pole Vault	IAAF	\$292

AGX™ CROSSBARS

- Exclusive half moon profile ends lower the center of gravity of the bar
- Heaviest crossbar the rules allow
- Shorter, more stable, end pieces redesigned for improved performance
- Features durable thick-walled pulltruded fiberglass rod
- Meets NFHS, NCAA and IAAF specifications, IAAF certified



INSPECT CROSSBARS FOR
VISIBLE AND CONCEALED DAMAGE
BEFORE ACCEPTING DELIVERY

CROSSBARS ARE NOT
GUARANTEED AGAINST BREAKAGE

529	High Jump	IAAF	\$136
530	Pole Vault	IAAF	\$142

GILL® COLLEGIATE CROSSBARS

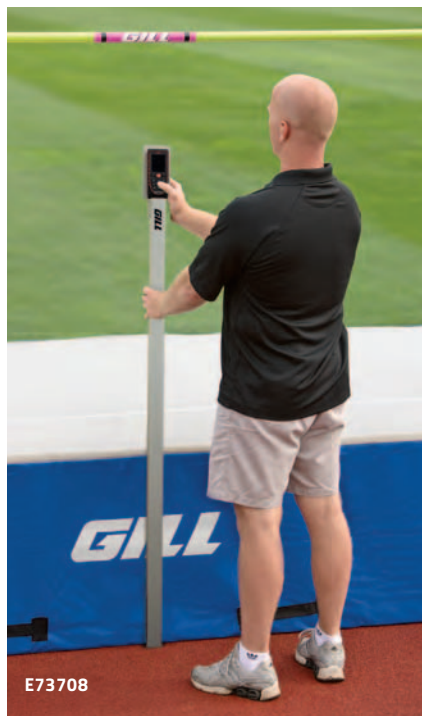
- Features durable thick-walled pulltruded fiberglass rod
- Minimum sag
- Order sets of three to help offset expensive shipping costs
- Meets NFHS, NCAA and IAAF specifications, IAAF certified

525	High Jump	IAAF	\$103/ea
5253	High Jump (3)	IAAF	\$300/set
526	Pole Vault	IAAF	\$103/ea
5263	Pole Vault (3)	IAAF	\$300/set
52113	Replacement Crossbar End		\$13

ESSENTIALS™ CROSSBARS

- Features durable pulltruded fiberglass rod
- Excellent choice for high school competitions
- Order sets of three to help offset expensive shipping costs
- Meets NFHS specifications

522	High Jump		\$68/ea
5223	High Jump (3)		\$197/set
523	Pole Vault		\$68/ea
5233	Pole Vault (3)		\$197/set
52116	Replacement Crossbar End		\$13


NEW

PV/HJ MEASURING STICK

- 59" tall aluminum measuring stick brings laser readout closer to eye level
- Use for both High Jump and Pole Vault events
- Simple to use: Utilize viewfinder to line up crossbar and press the button
- Measure in either English or Metric units
- Minimum measurement is 1.54m (5' ½"), No maximum measurement

E73708	Stick and Laser	\$996
E73707	Stick Only	\$100
E73710	Laser Only	\$921



ELASTIC KROSSBAND

- Training crossbar for PV and HJ
- Bright fluorescent orange elastic tubing
- 1" diameter foam sections

528 \$21

3-PIECE CROSSBARS

- Crossbar kit that ships by UPS instead of truck
- Reduced shipping charges
- Can be shipped UPS overnight
- Utilizes same durable thick-walled pultruded fiberglass as Collegiate Crossbars
- Meets NFHS and NCAA specifications



531	High Jump	\$139
532	Pole Vault	\$139



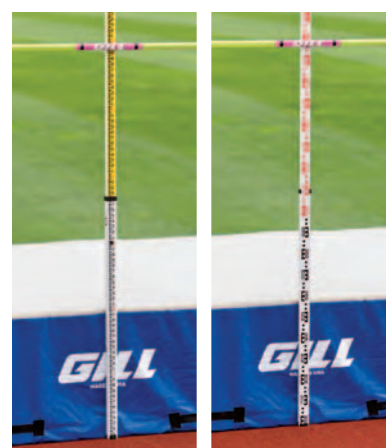
PUTTER UPPER

- Simplest crossbar placer ever made
- Fits over the end of any vaulting pole

710390 \$19


TELESCOPING CROSSBAR PLACER

- Facilitate easy placement of crossbars at all heights
- Telescoping pole extends 6' to 12' in 6" increments
- Thumb mechanism allows for quick adjustment

950 \$129


HIGH JUMP MEASURING ROD

- English scale side has ⅛" resolution
- Metric scale side has 1cm resolution
- Unit folds down to 49" long and weighs 4 ½ lb

722 \$177

VAULTING POLES**THE PACER[®] ADVANTAGE**

Pacer has vaulting pole models designed for every vaulter, from novice to elite. And all Pacer poles are designed with Best Flex™ technology allowing a smooth transition from pole to pole, no matter the length, weight, or model. Pacer poles are the only vaulting poles on the market featuring a One Year warranty.

PACER[®] ONE

The Pacer One is a versatile, economical pole perfect for every vaulter. The design 'slows down' the bend allowing more time to rotate into vertical position. Available 9' to 13' in 10 lb increments.

Pacer One is backed by a ONE-YEAR warranty.



9'
(2.75M)
\$259

ITEM #	TEST WT	TIP
527527	60 lb	21
527532	70 lb	21
527536	80 lb	21
527541	90 lb	21
527545	100 lb	21

10'
(3.10M)
\$286

ITEM #	TEST WT	TIP
531032	70 lb	21
531036	80 lb	21
531041	90 lb	21
531045	100 lb	21
531050	110 lb	21
531054	120 lb	21
531059	130 lb	21

11'
(3.35M)
\$323

ITEM #	TEST WT	TIP
533536	80 lb	21
533541	90 lb	21
533545	100 lb	21
533550	110 lb	21
533554	120 lb	21
533559	130 lb	21
533563	140 lb	21
533568	150 lb	21

11'6"
(3.51M)
\$334

ITEM #	TEST WT	TIP
535541	90 lb	21
535545	100 lb	21
535550	110 lb	21
535554	120 lb	21
535559	130 lb	21
535563	140 lb	21
535568	150 lb	21

12'
(3.66M)
\$345

ITEM #	TEST WT	TIP
536041	90 lb	21
536045	100 lb	21
536050	110 lb	21
536054	120 lb	21
536059	130 lb	18
536063	140 lb	18
536068	150 lb	16

12'6"
(3.81M)
\$361

ITEM #	TEST WT	TIP
537045	100 lb	21
537550	110 lb	21
537554	120 lb	21
537559	130 lb	18
537563	140 lb	18
537568	150 lb	16
537573	160 lb	16

13'
(3.96M)
\$377

ITEM #	TEST WT	TIP
540050	110 lb	18
540054	120 lb	18
540059	130 lb	18
540063	140 lb	16
540068	150 lb	16
540073	160 lb	13

**VAULTING POLES ARE NOT
GUARANTEED AGAINST BREAKAGE**

**INSPECT VAULTING POLES FOR
VISIBLE AND CONCEALED DAMAGE
BEFORE ACCEPTING DELIVERY**

CHOOSING POLE TIPS

Visit our online guide: www.gillathletics.com/poletips

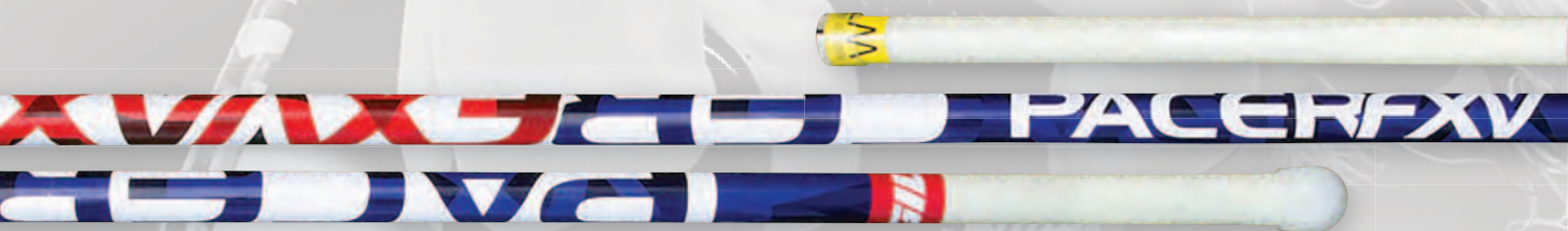
COMPETITION POLE TIPS

Tough, durable polyurethane for a softer plant and long lasting performance.

700002, 700004, 700005, 700007, 700010, 700013, 700016, 700018, and 700021 **\$10/ea**



Katie Nageotte
#teampacer



12'
(3.66M)

\$457

ITEM #	TEST WT	TIP
736045	100 lb	21
736047	105 lb	21
736050	110 lb	21
736052	115 lb	21
736054	120 lb	21
736057	125 lb	21
736059	130 lb	18
736061	135 lb	18
736063	140 lb	18
736066	145 lb	18
736068	150 lb	18

12'6
(3.81M)

\$488

ITEM #	TEST WT	TIP
737545	100 lb	21
737547	105 lb	21
737550	110 lb	21
737552	115 lb	18
737554	120 lb	18
737557	125 lb	18
737559	130 lb	18
737561	135 lb	18
737563	140 lb	16
737566	145 lb	16
737568	150 lb	16

13'
(3.96M)

\$540

ITEM #	TEST WT	TIP
740050	110 lb	18
740052	115 lb	18
740054	120 lb	18
740057	125 lb	18
740059	130 lb	18
740061	135 lb	18
740063	140 lb	16
740066	145 lb	16
740068	150 lb	16
740070	155 lb	16
740073	160 lb	13

15'
(4.57M)

\$634

ITEM #	TEST WT	TIP
746057	125 lb	13
746059	130 lb	13
746061	135 lb	13
746063	140 lb	10
746066	145 lb	10
746068	150 lb	10
746070	155 lb	10
746073	160 lb	10
746075	165 lb	7
746077	170 lb	7
746080	175 lb	7
746082	180 lb	5

15'6
(4.72M)

\$707

ITEM #	TEST WT	TIP
747068	150 lb	10
747070	155 lb	10
747073	160 lb	7
747075	165 lb	7
747077	170 lb	5
747080	175 lb	5
747082	180 lb	4
747084	185 lb	4
747086	190 lb	4
747088	195 lb	4

16'1
(4.90M)

\$748

ITEM #	TEST WT	TIP
749073	160 lb	10
749075	165 lb	10
749077	170 lb	7
749080	175 lb	7
749082	180 lb	5
749084	185 lb	5
749086	190 lb	4
749088	195 lb	4
749091	200 lb	4

PACER[®]FXV

Gill's flagship[®] vaulting pole is made from an S-fiberglass and is designed to be a consistent through the series of poles. This creates a smooth transition for a vaulter moving from one pole to the next. The Pacer FXV performs well for all styles of jumpers. Available 12' through 16'9" in 5 lb increments. Pacer FXV is backed by a ONE-YEAR warranty.

13'6"
(4.11M)

\$571

ITEM #	TEST WT	TIP
741554	120 lb	16
741557	125 lb	16
741559	130 lb	16
741561	135 lb	16
741563	140 lb	16
741566	145 lb	16
741568	150 lb	13
741570	155 lb	13
741573	160 lb	13
741575	165 lb	13
741577	170 lb	10
741580	175 lb	10

14'
(4.27M)

\$582

ITEM #	TEST WT	TIP
742557	125 lb	16
742559	130 lb	16
742561	135 lb	13
742563	140 lb	13
742566	145 lb	13
742568	150 lb	13
742570	155 lb	13
742573	160 lb	13
742575	165 lb	10
742577	170 lb	10
742580	175 lb	7
742582	180 lb	7

14'6"
(4.42M)

\$592

ITEM #	TEST WT	TIP
744059	130 lb	13
744061	135 lb	13
744063	140 lb	10
744066	145 lb	10
744068	150 lb	10
744070	155 lb	10
744073	160 lb	10
744075	165 lb	10
744077	170 lb	7
744080	175 lb	7
744082	180 lb	7
744084	185 lb	7

16'5"
(5.01M)

\$821

ITEM #	TEST WT	TIP
750073	160 lb	10
750075	165 lb	7
745077	170 lb	7
750080	175 lb	7
750082	180 lb	7
750084	185 lb	5
750086	190 lb	5
750088	195 lb	4
750091	200 lb	4

16'9"
(5.11M)

\$873

ITEM #	TEST WT	TIP
751084	185 lb	5
751086	190 lb	5
751088	195 lb	4
751091	200 lb	4
751093	205 lb	4

**Vaulting poles are not
guaranteed against breakage.**

**Inspect vaulting poles for
visible and concealed damage
before accepting delivery.**

CHOOSING POLE TIPS

Visit our online guide: www.gillathletics.com/poletips

COMPETITION POLE TIPS

Tough, durable polyurethane for a softer plant and long lasting performance.

700002, 700004, 700005, 700007, 700010, 700013, 700016, 700018, and 700021 **\$10/ea**



NEW



13'
(3.96M)
\$561

ITEM #	TEST WT	TIP
340050	110 lb	21
340052	115 lb	18
340054	120 lb	18
340057	125 lb	18
340059	130 lb	18
340061	135 lb	18
340063	140 lb	18
340066	145 lb	18
340068	150 lb	16
340070	155 lb	16
340073	160 lb	16

13'6
(4.11M)
\$605

ITEM #	TEST WT	TIP
341554	120 lb	18
341557	125 lb	18
341559	130 lb	18
341561	135 lb	16
341563	140 lb	16
341566	145 lb	16
341568	150 lb	16
341570	155 lb	16
341573	160 lb	13
341575	165 lb	13
341577	170 lb	13
341580	175 lb	13

14'
(4.27M)
\$644

ITEM #	TEST WT	TIP
342557	125 lb	16
342559	130 lb	16
342561	135 lb	16
342563	140 lb	16
342566	145 lb	16
342568	150 lb	13
342570	155 lb	13
342573	160 lb	13
342575	165 lb	13
342577	170 lb	13
342580	175 lb	13
342582	180 lb	10

15'6
(4.72M)
\$820

ITEM #	TEST WT	TIP
347068	150 lb	10
347080	155 lb	10
347073	160 lb	10
347075	165 lb	10
347077	170 lb	10
347080	175 lb	10
347082	180 lb	7
347084	185 lb	7
347086	190 lb	5
347088	195 lb	5

16'1
(4.90M)
\$860

ITEM #	TEST WT	TIP
349073	160 lb	10
349075	165 lb	10
349077	170 lb	10
349080	175 lb	10
349082	180 lb	7
349084	185 lb	7
349086	190 lb	5
349088	195 lb	5
349091	200 lb	5

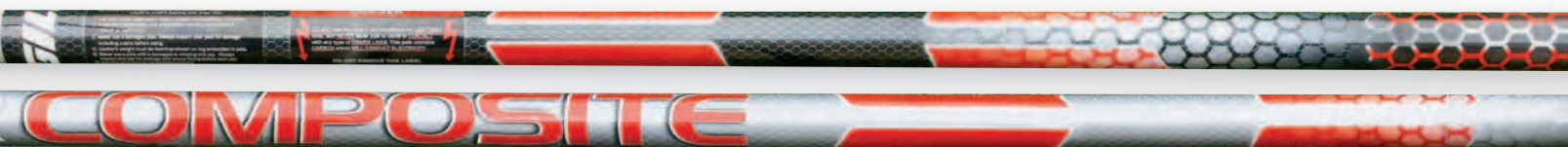
16'5
(5.01M)
\$928

ITEM #	TEST WT	TIP
350073	160 lb	10
350075	165 lb	10
350077	170 lb	10
350080	175 lb	7
350082	180 lb	7
350084	185 lb	7
350086	190 lb	5
350088	195 lb	5
350091	200 lb	4

PACER® COMPOSITE

The new Pacer COMPOSITE blends proprietary T2-Fiber™ with Carbon fiber and light-weight S-Glass to create the next generation pole design for the advanced and technical vaulter. The Pacer COMPOSITE utilizes Pacer FXV technology to match the length and flex needs of your series of Pacer poles. This patent-pending design achieves a substantially lighter carry weight, increased tensile strength, and superior energy return in a robust and durable composite construction.

Available 13'-16'9" in 5 lb increments. *Pacer Composite is backed by a ONE-YEAR warranty.*



14'6"
 (4.42M)
\$682

ITEM #	TEST WT	TIP
344059	130 lb	13
344061	135 lb	13
344063	140 lb	13
344066	145 lb	10
344068	150 lb	10
344070	155 lb	10
344073	160 lb	10
344075	165 lb	10
377077	170 lb	10
344080	175 lb	10
344082	180 lb	10
344084	185 lb	10
344086	190 lb	7
344088	195 lb	7

15'
 (4.57M)
\$780

ITEM #	TEST WT	TIP
346063	140 lb	13
346066	145 lb	10
346068	150 lb	10
346070	155 lb	10
346073	160 lb	10
346075	165 lb	10
346077	170 lb	10
346080	175 lb	10
346082	180 lb	7
346084	185 lb	7
346086	190 lb	7

16'9"
 (5.11M)
\$958

ITEM #	TEST WT	TIP
351084	185 lb	5
351086	190 lb	5
351088	195 lb	4
351091	200 lb	4
351093	205 lb	4

**VAULTING POLES ARE NOT
 GUARANTEED AGAINST BREAKAGE**

**INSPECT VAULTING POLES FOR
 VISIBLE AND CONCEALED DAMAGE
 BEFORE ACCEPTING DELIVERY**

CHOOSING POLE TIPS

Visit our online guide: www.gillathletics.com/poletips

COMPETITION POLE TIPS

Tough, durable polyurethane for a softer plant and long lasting performance.

700002, 700004, 700005, 700007, 700010, 700013, 700016, 700018, and 700021 **\$10/ea**



POLE BAGS & ACCESSORIES

CUSTOM POLE BAG

- Customize for your school's personality!
- Holds up to five vaulting poles
- Shoulder strap for ease of transportation
- Heavy duty vinyl and leather reinforced ends for long life
- Made to fit 6" corrugated drain tube (not included)
- Use the two-digit number of your vinyl color selection (Page 8) to replace the XX in the item number

8008##CXX 10'-18' Custom Pole Bag \$519

*Use two-digit number of desired pole bag length to replace '##' in part number. 10'-18' lengths available.

PACER DELUXE TEAM POLE BAG

- Holds up to 20 vaulting poles (10 sleeved, 10 unsleeved)
- Heavy duty nylon outer with a dense inner 1/2" thick foam fused with a hard plastic shell for strength
- 10 durable sewn-in pole sleeves
- Soft rubber handles and seams

700714 14' Team Pole Bag \$717

700715 15' Team Pole Bag \$800

700716 16' Team Pole Bag \$863

700717 17' Team Pole Bag \$904



ESSENTIALS™ POLE BAG

- Holds up to five vaulting poles
- Heavy duty polyester for long life
- Maximum length is 15'
- Made to fit 6" corrugated drain tube (not included)

800801 \$114

ELITE POLE BAG

- Holds up to five vaulting poles
- Heavy duty vinyl and leather reinforced ends for long life
- Adjustable from 14' 6" to 17' 6"
- Made to fit 6" corrugated drain tube (not included)

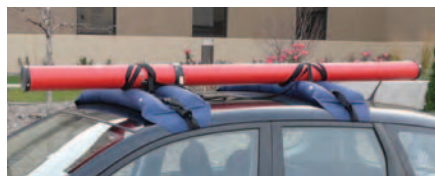
800802 \$207



POLE PROTECTOR SLEEVE

Slips on easily to provide maximum protection against damage caused by pole contact with the upper edges of the vault box

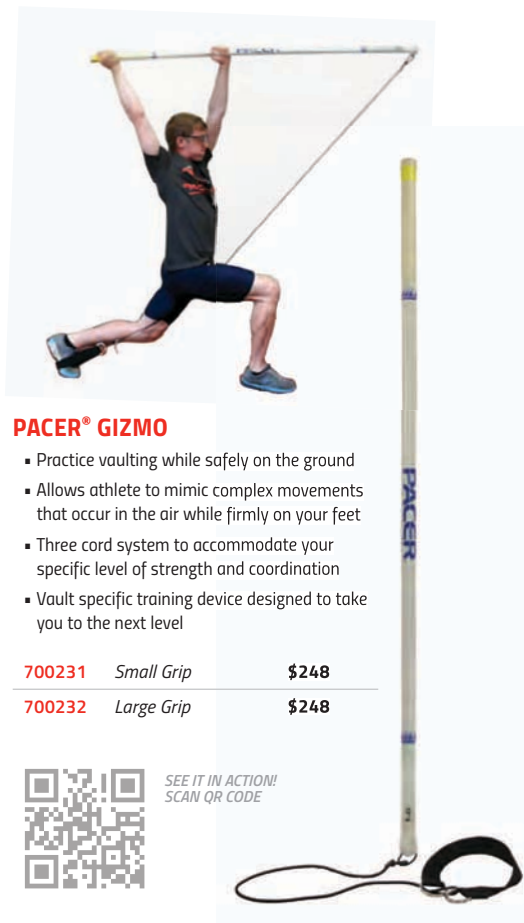
700255 \$7.75



HANDIRACK™ INFLATABLE ROOF RACK

- Can be used to transport vaulting poles and/or javelins
- Economical alternative to installing a permanent after market roof rack
- Includes 2-HandiTrack twin tubes with 5 metal D-ring anchor points, 2x3m webbing tie-downs, air pump and travel bag

700800 \$155



PACER® GIZMO

- Practice vaulting while safely on the ground
- Allows athlete to mimic complex movements that occur in the air while firmly on your feet
- Three cord system to accommodate your specific level of strength and coordination
- Vault specific training device designed to take you to the next level

700231 Small Grip \$248

700232 Large Grip \$248



SEE IT IN ACTION!
SCAN QR CODE



VAULT TRAINER SYSTEM

- Unique device for beginner and intermediate vaulters
- Allows athlete to acclimate the body to positions occurring during peak vault height
- Strengthens muscle groups for effective push off
- Helps to coordinate grip and pole positions while rotating around pole for push off

TA190 \$322



INTERNATIONAL POLE CART

- Built to hold all the vaulting poles you own
- Made of sturdy steel with high end design
- Dual purposed wheels switch from swivel to locked position in a snap

733180	<i>Cart</i>	\$964
735	<i>Tow Bar Kit</i>	\$149



CHALK STAND

- Store chalk during practice and competition
- Lightweight stand features a wide opening for hands, a pocket for extra chalk, and rungs for hanging accessories or resting vaulting poles

WE305	<i>Chalk Stand</i>	\$268
700250	<i>1 lb Sports Chalk</i>	\$16



PORTABLE POLE RACK

- Convenient way to store and protect your poles during meets and practice
- Free standing pole rack made of heavy duty steel with durable powder coat finish

725	\$168
------------	--------------



PV TAKEOFF INDICATOR

- Large easy to read numbers
- Easily identify the take-off step placement

TA189	\$23
--------------	-------------



VAULT BOX POWER PUMP

- Battery powered by 3 "D" cell batteries (not included)
- Pump fully submersible
- Empties a water filled vault box in less than five minutes

72001	\$138
--------------	--------------



GILL® PR SLIDING VAULT BOX

- Sliding vault box allows vaulters to perfect the run, plant, and take-off
- Pole carriage, run mechanics, tempo, and step placement are more effectively learned using this training tool
- Tip proof design has a built in handle, a zero mark molded into the side for placement accuracy
- Constructed of a high-impact thermoplastic

2531	\$540
-------------	--------------



GRRRIP PLUS LOTION & SPRAY

- Scientifically formulated mixture developed to enhance hand-grip up to 75% better
- Fluid mixes with natural skin oils to create a moisture barrier yet still allows the skin to breathe
- More convenient and cleaner than chalk

700253	<i>Lotion</i>	\$11
700254	<i>Spray</i>	\$11



POLE VAULT GRIP TAPE

- 12 ½ yard roll of colored adhesive tape
- 1 ½" width

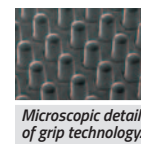
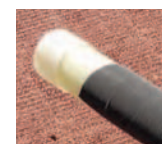
700259	<i>White (15 yds)</i>	\$8.50
700260	<i>Red</i>	\$8.50
700261	<i>Maroon</i>	\$8.50
700262	<i>Gold</i>	\$8.50
700263	<i>Green</i>	\$8.50
700264	<i>Royal</i>	\$8.50
700265	<i>Purple</i>	\$8.50
700266	<i>Black</i>	\$8.50
700267	<i>Pink</i>	\$8.50



GRAPHIC POLE VAULT GRIP TAPE

- 20 yard roll of adhesive design tape
- Camo/flag designs come in 2" width
- Jolly Roger design comes in 1" width

700273	<i>USA Flag</i>	\$17
700271	<i>Pink Camo</i>	\$17
700272	<i>Winter Camo</i>	\$17
700274	<i>Jolly Roger</i>	\$17



NINJA ELITE POLE VAULT GRIP TAPE

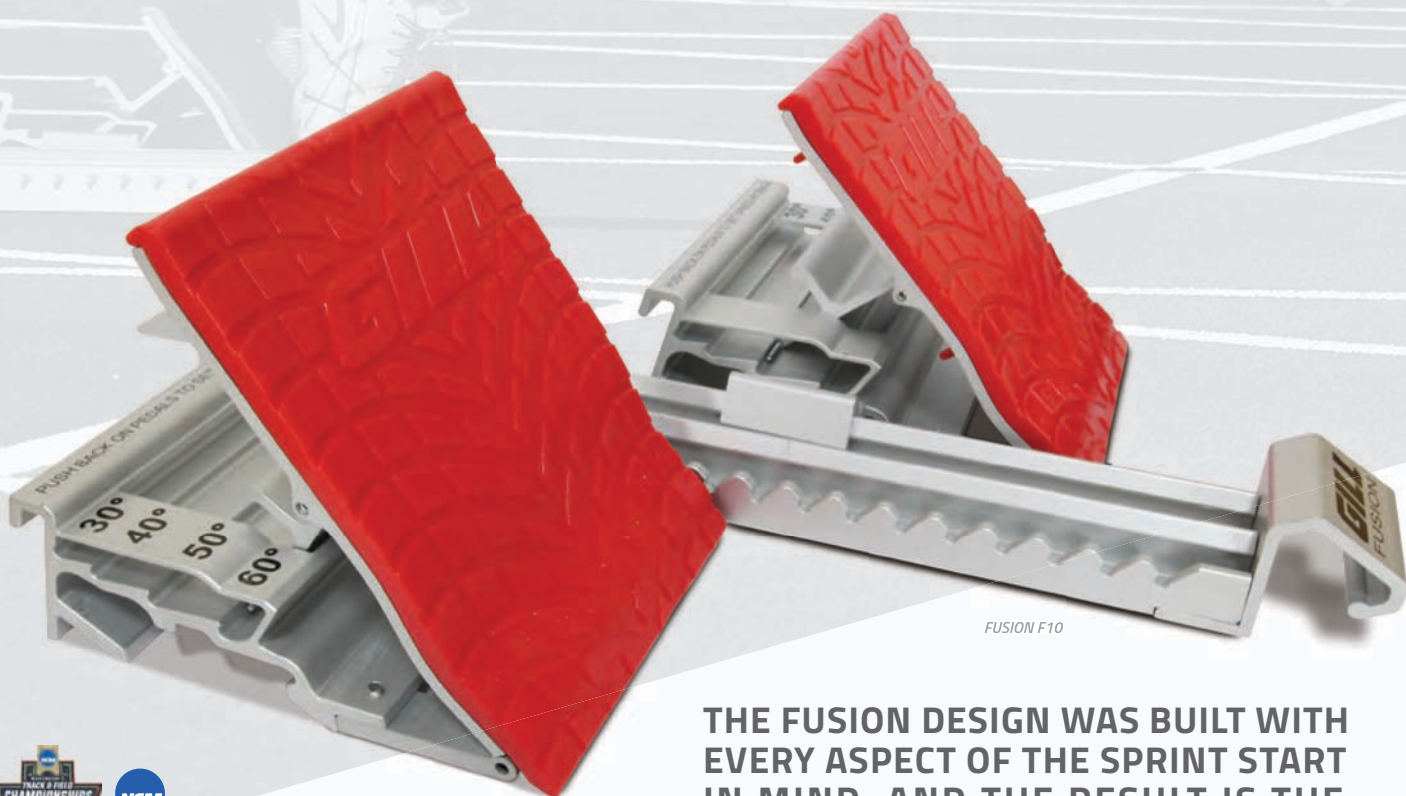
- Lab-designed with thousands of gripping 'fingers'
- Grip lighter and hold tighter
- No additional substances needed (chalk, sticky spray, etc)
- Slip resistant, vibration dampening and easy release properties
- Water and oil resistant

700281	<i>9' x 1"</i>	\$21
---------------	----------------	-------------

SPRINTS

FUSION™

FASTER STARTS THROUGH ADVANCED TECHNOLOGY



FUSION F10

THE FUSION DESIGN WAS BUILT WITH EVERY ASPECT OF THE SPRINT START IN MIND, AND THE RESULT IS THE BEST STARTING BLOCK IN EXISTENCE.



OFFICIAL EQUIPMENT SUPPLIER TO THE
2019 TRACK & FIELD CHAMPIONSHIPS

FUSION™ F10 STARTING BLOCK

- Exclusive 8" x 10" pedal allows full heel support for the best starts
- Precise and consistent foot placement is ensured using integrated pedal markings
- Angled spikes in base of pedals guarantee no slipping
- Built in handle allows for easy carriage between locations
- Pedals adjustable to 30°, 40°, 50°, 60°
- Meets NFHS, NCAA and IAAF specifications, IAAF certified

730183C02	Royal Blue		\$503
730183C03	Red		\$503
730183C05	Orange		\$503
730183C12	Black		\$503
730183C15	Dark Green		\$503



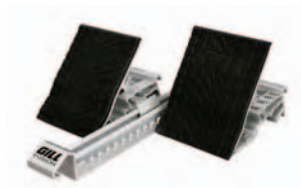
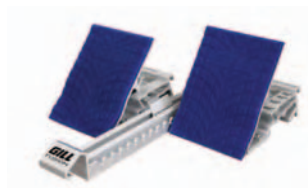
Adjust Fusion pedals to four different angles to fit your starting style.



Handle provides easy transport.



MORE FUSION COLOR OPTIONS



FUSION™ F8 STARTING BLOCK

- Exclusive 8" x 8" pedals designed for a more aggressive acceleration pattern
- Meets NFHS, NCAA and IAAF specifications, IAAF certified

730182C02	Royal Blue	IAAF	\$471
730182C03	Red	IAAF	\$471
730182C05	Orange	IAAF	\$471
730182C12	Black	IAAF	\$471
730182C15	Dark Green	IAAF	\$471

FUSION™ F4 STARTING BLOCK

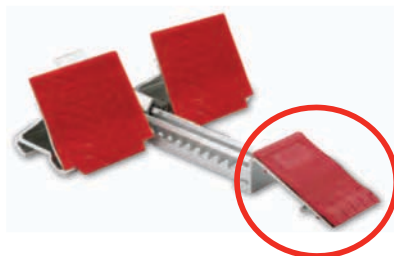
- Standard 4" x 8" pedals
- Meets NFHS, NCAA and IAAF specifications, IAAF certified

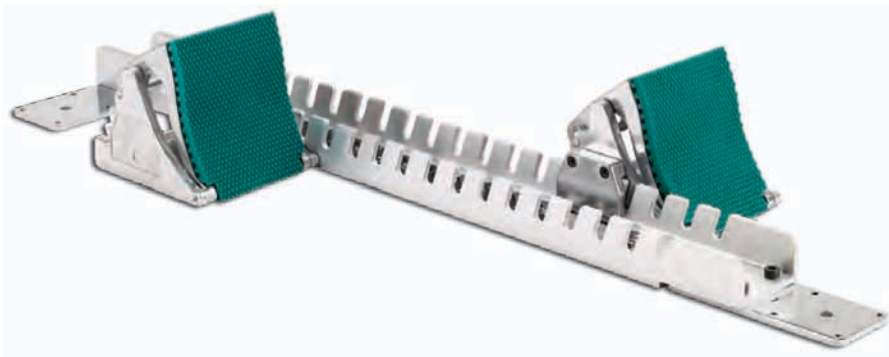
730181C02	Royal Blue	IAAF	\$396
730181C03	Red	IAAF	\$396
730181C05	Orange	IAAF	\$396
730181C12	Black	IAAF	\$396
730181C15	Dark Green	IAAF	\$396

MOYE™ PEDAL ADAPTER

Converts any Fusion block into a Moye style block

730168 \$68

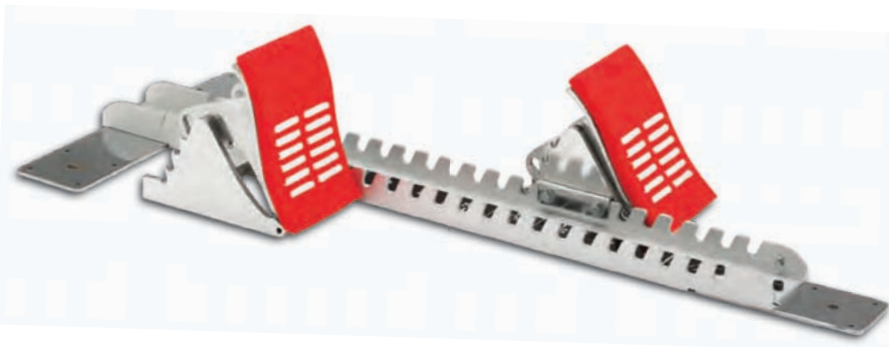




NATIONAL STARTING BLOCK

- Aircraft aluminum rail with cast aluminum pedals
- Pedals adjust to 45°, 55°, 65°, 75°
- Ruled decal in rail allows quick, easy, repeatable pedal set-up
- Includes ½" needle spikes for synthetic tracks
- *Meets NFHS, NCAA and IAAF specifications, IAAF certified*

730155  \$300



COLLEGIATE STARTING BLOCK

- Aircraft aluminum construction for maximal lifespan
- Pedals adjust to 45°, 55°, 65°, 75°
- Ruled decal in rail allows quick, easy, repeatable pedal set-up
- Includes ½" needle spikes for synthetic tracks
- *Meets NFHS and NCAA specifications*

410 \$191



SCHOLASTIC STARTING BLOCK

- Polished steel rail with cast aluminum pedals
- Pedals adjust to 45°, 55°, 65°, 75°
- Ruled decal in rail allows quick, easy, repeatable pedal set-up
- Includes ½" needle spikes for synthetic tracks
- *Meets NFHS and NCAA specifications*

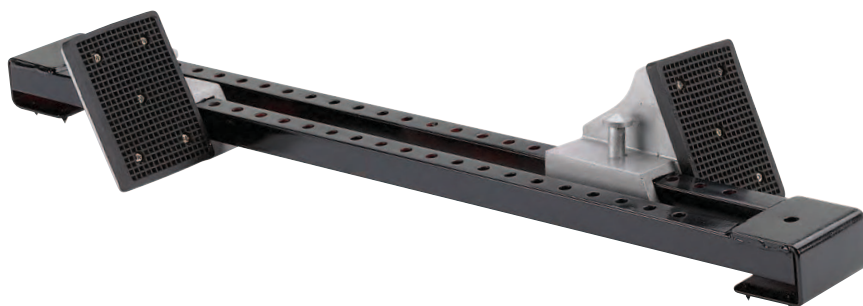
412 \$135



ALL SURFACE STARTING BLOCK

- One piece, sixteen gauge steel with no loose parts
- Slightly wider pedals allow for a wider stance
- Fixed angle pedals with rubber pads
- Change pedal positions with simple Pedal Snap Lock
- Sixteen needle spikes eliminate slipping
- *Meets NFHS specifications*

414 \$99



ESSENTIALS™ STARTING BLOCK

- One piece, all steel construction with durable black powder coat finish
- Standard width pedals with rubber pads
- Change pedal positions with simple Spring Lock Adjustment
- Features built in spikes to eliminate slipping
- *Meets NFHS specifications*

416 \$80

VP416 \$880

INCLUDED: (1) Essentials Block Cart, (8) Essentials Starting Blocks



INDOOR STARTING BLOCK

- No nails, pins or holes needed to hold in place
- Foot pressure on the flaps provide a non-slip start

417 \$32



GILL® INTERNATIONAL STARTING BLOCK CART

- Holds up to 10 starting blocks horizontally
- Handle is included for easy transport
- Includes a storage shelf for loose pedals and accessories
- Steel construction with durable, architectural gray powder coat finish

733190 \$1560



ESSENTIALS™ BLOCK CART

- Holds up to 10 starting blocks; any style
- Steel construction with durable black powder coat finish

923 \$267



GILL® TRANSPORTER STARTING BLOCK CART

- Holds up to 16 starting blocks; any style
- Large wheels make transportation easy
- Steel construction with durable black powder coat finish

9311 \$699

CONTINUUM™

THE WORLD'S FASTEST HURDLE IS ALSO THE WORLD'S SAFEST



OFFICIAL EQUIPMENT SUPPLIER TO THE
2019 TRACK & FIELD CHAMPIONSHIPS

CONTINUUM™ C4 AUTOMATIC HURDLES

The Continuum™ hurdle is designed to be the safest, fastest, and most unobtrusive hurdle that the rules will allow, all accomplished by placing the gateboard directly over the pivot point (tip-over-fulcrum).

- Internal leg weight from Continuum looping mechanism creates the most reliable hassle-free automatic hurdle on the market
- Redesigned robust frame features reinforced gusseted elbows for unparalleled strength
- Exclusive extrusion gatetubes allow for graphic customization
- Unique inner leg height indicator for no-mistake height settings (30", 33", 36", 39", 42")
- Internalized height mechanism creates whole-unit hurdle reducing maintenance and upkeep
- *Meets NFHS, NCAA and IAAF specifications*
- *5 year warranty*

1041CXX	41" Continuum C4	\$535
1047CXX	47" Continuum C4	\$535

CONTINUUM™ C4 MANUAL HURDLES

Includes all high-end features from the Auto C4 except with manual weight adjustments.

1141CXX	41" Continuum C4 Manual	\$406
1147CXX	47" Continuum C4 Manual	\$406



On all Gill Hurdles*
Call for Details.

*Excludes Essentials

Automatic Hurdle U.S. Patent
Manual Hurdle U.S. Patent

#9,486,714
#9,427,677

CUSTOM GATEBOARD PRINTING

Customize your hurdle boards with four color printing and show off your hurdles!

946	59 or Less Hurdles	\$70/order
	60 or More Hurdles	FREE

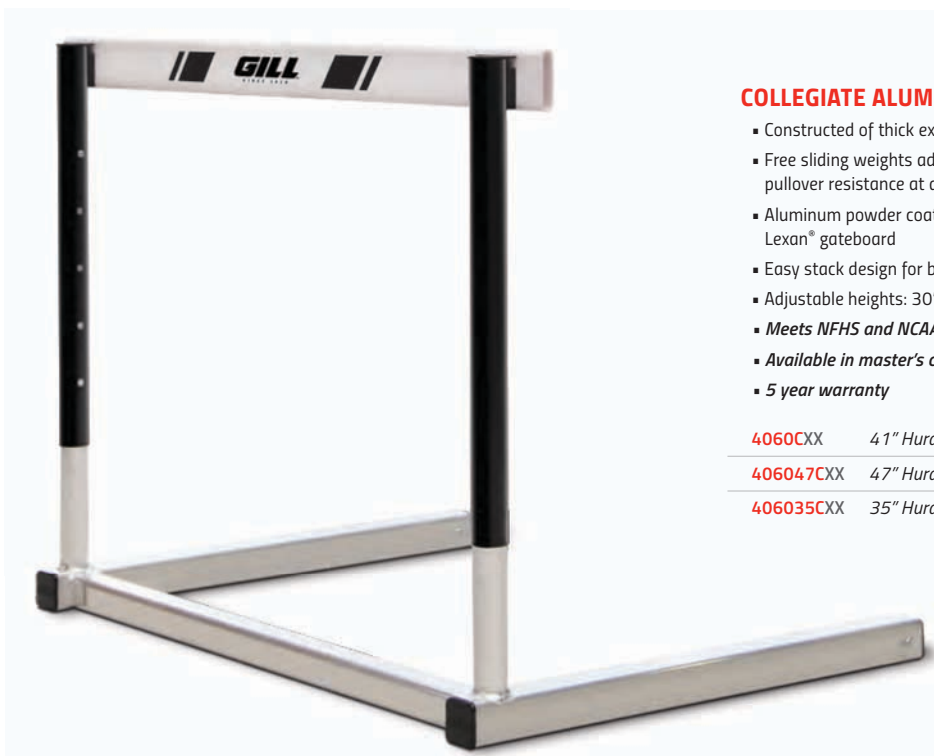


STANDARD GATEBOARD PRINTING

Customize your hurdle boards with standard gateboard printing. Block letters printed in single color.

945	59 or Less Hurdles	\$35/order
	60 or More Hurdles	FREE





COLLEGIATE ALUMINUM HURDLE

- Constructed of thick extruded aircraft aluminum
- Free sliding weights adjust quickly to official pullover resistance at all heights
- Aluminum powder coated gatetubes and Lexan® gateboard
- Easy stack design for better stacking and portability
- Adjustable heights: 30", 33", 36", 39", 42"
- *Meets NFHS and NCAA specifications*
- *Available in master's competition hurdle sizes*
- *5 year warranty*

4060CXX	41" Hurdle	\$207
406047CXX	47" Hurdle	\$227
406035CXX	35" Hurdle	\$238

CUSTOMIZABLE HURDLES

Gatetubes available in a variety of bright and durable powder coat colors at no extra cost.





**To specify color with order, use the two-digit number of your color selection to replace XX in the item number.*

**Gray and Black powder coat available in Gloss or Flat*



NATIONAL ALUMINUM HURDLE

- Constructed of thick extruded aircraft aluminum
- Manual weight adjustment to meet precise official pullover force at each height
- Aluminum powder coated gatetubes and Lexan® gateboard
- Easy stack design for better stacking and portability
- Adjustable heights: 30", 33", 36", 39", 42"
- *Meets NFHS, NCAA and IAAF specifications, IAAF certified*
- *5 year warranty*

406CXX	41" Hurdle		\$229
40647CXX	47" Hurdle		\$239
40635CXX	35" Hurdle		\$248



ELITE HIGH SCHOOL HURDLE

- Best selling high school hurdle that sets the premier standard for elite programs
- Aluminum square tube construction
- Welded cross support design provides unrivalled durability
- Aluminum powder coated gatetubes and Lexan® gateboard
- Gatetubes allow for GRAPHIC customization
- Adjustable heights: 30", 33", 36", 39", 42"
- **Meets NFHS specifications**
- **5 year warranty**
- **Ships assembled**

402CXX	41" Elite High School Hurdle	\$173
402TCXXSP	41" Hurdle with Gatetube Graphics	\$184



Easy stack design for better stacking and portability

CUSTOMIZABLE GATETUBES

See color charts on page 31 to replace the XX in the item numbers.



HIGH SCHOOL HURDLE

- Powder coated steel U-shaped single cross support design
- Single cross support allows for easy carriage and unhindered plyometric drills
- Aluminum powder coated gatetubes and Lexan® gateboard
- Adjustable heights: 30", 33", 36", 39", 42"
- **Meets NFHS specifications**
- **5 year warranty**
- **Assembly required**

403CXX	41" Hurdle	\$146
40335CXX	35" Hurdle	\$194

SCHOLASTIC ALUMINUM HURDLE

- All aluminum design provides unmatched value for high school programs
- Aluminum powder coated gatetubes and Lexan® gateboard
- Adjustable heights: 30", 33", 36", 39", 42"
- **Meets NFHS specifications**
- **5 year warranty**
- **Assembly required**

411CXX	41" Hurdle	\$123
---------------	------------	--------------

ESSENTIALS™ HURDLE

- Strong all steel construction
- Economical hurdle that meets official pullover resistance at all heights
- Rigid double-crossbar design ensures superior durability
- PVC gateboard
- Adjustable heights: 27", 30", 33", 36", 39", 42"
- **Meets NFHS specifications**
- **1 year warranty**
- **Assembly required**

400CXX	41" Hurdle	\$103
---------------	------------	--------------

TRIPLE GATETUBE HURDLE

- Strong all steel construction
- Hurdle adjusts for competition heights and shorter heights for training purposes
- Lexan® Gateboard
- Adjustable heights: 21", 24", 27", 30", 33", 36", 39"
- **Meets NFHS specifications**
- **1 year warranty**
- **Assembly required**

404CXX	41" Hurdle	\$108
---------------	------------	--------------



GILL® FLIGHT HURDLE CART

- World's most convenient and efficient hurdle cart
- Four wheel design provides superior moveability compared to corner cutting three wheel designed carts
- Sturdy steel construction with durable black powder coat finish
- Efficiently supports up to 10 hurdles at a time

4630	41" Hurdle Cart	\$331
4631	47" Hurdle Cart	\$383

HURDLE CART WEATHER COVER

733630CXX	41" Cart Weather Cover	\$271
733631CXX	47" Cart Weather Cover	\$271
733630CXXSP	41" Cart Weather Cover with Graphics	\$318
733631CXXSP	47" Cart Weather Cover With Graphics	\$318



CUSTOMIZABLE



*To specify color with order, use the two-digit number of your color selection to replace XX in the item number.



HURDLE PORTER

- Easy convenient way to move 8-10 hurdles
- Steel construction with durable black powder coat finish
- Compatible with 'L' shaped hurdles only

4210	41" Hurdle Porter	\$331
42147	47" Hurdle Porter	\$545



HURDLE CART

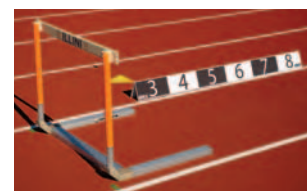
- Unique walk-in design
- Steel construction with durable black powder coat finish
- Large swivel casters for easy transportation
- Compatible with both rocker and 'L' shaped hurdles

4010	41" Hurdle Cart (Holds 8-10)	\$438
4020	41" Hurdle Cart (Holds 18-20)	\$782
4036	35" Hurdle Cart (Holds 8-10)	\$782

REPLACEMENT GATEBOARDS

Durable Lexan® gateboards. Hardware not included.

P40347	41" Gateboard	\$34
P40349	41" Ribbed Gateboard	\$40
40353	47" Ribbed Gateboard	\$43



HURDLE HEIGHT DECAL

- Decal that includes indicators for 30", 33", 36", 39", 42" positions
- Designed to improve accuracy of meet volunteers and athlete practices
- Compatible with all hurdle brands (excluding Gill Continuum)

948	Hurdle Height Decal (set of 10)	\$11/set
-----	---------------------------------	----------



FOAM HURDLE BOARD GUARD

- Easily attaches to hurdle for maximum protection against injury

403BG	Guard	\$12/ea
403BG10	Guards (10)	\$115/set

HURDLE STRIDE CHECKER

- Improve's athlete's take-off distance
- Provides the coach with immediate feedback on athlete's take-off

4031	\$207
------	-------

THROWS

DISCUS

PACER AND OTE DISCUSES HAVE BEEN USED TO SET
WORLD RECORDS AND WIN CHAMPIONSHIPS FOR YEARS.



NEW

2204



82420



2203



2202



720201



817

OTE™ CARBON DISCUS

- Recommended for elite throwers
- Aluminum reinforced carbon side plates
- Wide steel alloy rim
- Meets NFHS, NCAA and IAAF specifications
- Patent Pending

2104	1.0K		85%	\$445
2164	1.6K		86%	\$465
2204	2.0K		90%	\$485

PACER® ORANGE DISCUS

- Recommended for advanced throwers
- Orange ABS plastic side plates
- Steel alloy rim
- Meets NFHS, NCAA and IAAF specifications, IAAF certified

82410	1.0K		84%	\$222
82415	1.5K		84%	\$236
82416	1.6K		83%	\$240
82417	1.75K		86%	\$246
82420	2.0K		89%	\$258

OTE™ VHM DISCUS

- Recommended for advanced throwers
- Red anodized aluminum side plates
- Steel alloy rim
- Meets NFHS, NCAA and IAAF specifications, IAAF certified

2103	1.0K		76%	\$268
2163	1.6K		82%	\$279
2203	2.0K		89%	\$308

OTE™ HM DISCUS

- Recommended for advanced throwers
- Precision aluminum side plates
- Steel alloy rim
- Meets NFHS, NCAA and IAAF specifications, IAAF certified

2102	1.0K		72%	\$230
2162	1.6K		78%	\$238
2202	2.0K		82%	\$265

PACER® GOLD DISCUS

- Recommended for advanced throwers
- Gold ABS plastic side plates
- Bronze alloy rim
- Meets NFHS, NCAA and IAAF specifications, IAAF certified

720203	1.0K		78%	\$339
720202	1.6K		81%	\$370
720201	2.0K		84%	\$380

PACER® BLACK DISCUS

- Recommended for intermediate throwers
- ABS plastic side plates
- High quality steel rim
- Meets NFHS, NCAA and IAAF specifications, IAAF certified

819	1.0K		80%	\$184
818	1.6K		85%	\$192
817	2.0K		85%	\$211

HOLLOWOOD STAR™ DISCUS

- Recommended for intermediate throwers
- Straight grained hard rock maple side plates
- High quality steel rim
- Meets NFHS, NCAA and IAAF specifications, IAAF certified

313	1.0K	IAAF	65%	\$291
305	1.6K		74%	\$318
300	2.0K	IAAF	75%	\$329



PACER® GHOST DISCUS

- Recommended for intermediate throwers
- Clear plated discus
- Stainless steel rim
- Meets NFHS, NCAA and IAAF specifications

720310	1.0K	80%	\$184
720316	1.6K	80%	\$195
720320	2.0K	80%	\$205

ESSENTIALS™ DISCUS

- Recommended for beginner throwers
- ABS plastic side plates
- High quality steel rim
- Meets NFHS, NCAA and IAAF specifications

82310	1.0K	Pink	58%	\$49
82316	1.6K	Green	61%	\$64
82320	2.0K	Green	67%	\$73



GILL® BLUE DISCUS

- Recommended for beginner throwers
- ABS plastic side plates
- High quality steel rim
- Meets NFHS, NCAA and IAAF specifications

816	1.0K	75%	\$76
815	1.6K	75%	\$86
814	2.0K	75%	\$102



GILL® RED DISCUS

- Recommended for intermediate throwers
- ABS plastic side plates
- High quality steel rim
- Meets NFHS, NCAA and IAAF specifications

312	1.0K	78%	\$86
309	1.6K	80%	\$98
303	2.0K	80%	\$116



RUBBER DISCUS

- Solid one-piece construction
- Tough, durable rubber
- Meets NFHS specifications

310	1.0K	\$19
307	1.6K	\$20
302	2.0K	\$21



INDOOR RUBBER DISCUS

- Solid one-piece rubber construction
- Won't scuff floors or walls
- Meets NFHS specifications

311	1.0K	\$21
308	1.6K	\$23
304	2.0K	\$30



RUBBER DISCUS WITH HANDSTRAP

- Adjustable hand strap
- For training only
- Warning: Practice in a protective cage

81310	1.0K	\$26
81316	1.6K	\$30
81320	2.0K	\$33



COMPETITOR WOOD DISCUS

- Recommended for beginner throwers
- Laminated wood side plates
- High quality steel rim
- Meets NFHS, NCAA and IAAF specifications

317	1.0K	54%	\$59
31601	1.5K	65%	\$61
316	1.6K	67%	\$62
31602	1.75K	68%	\$63
315	2.0K	69%	\$67
81025	2.5K	70%	\$103

OFFICIAL
 COMPETITION
 REFERENCE GUIDE

THROWS

HAMMERS

NEW ONE-PIECE
TEXTURED HANDLE

NEW LIGHTWEIGHT
BALL BEARING SWIVEL

ORBITER™ - TUNGSTEN

- Smaller diameter 100% tungsten-filled shell: 125mm for 20lb balls and 156mm for 35lb balls
- New and improved one-piece textured handle
- Exclusive lightweight ball-bearing swivel reduces torque and friction during rotation
- Kevlar weight bag is the lightest and most durable bag on the market
- Plastic injection NBR collar reduces damage potential and allows uninhibited rotation
- 1 year warranty

4959	20 lb	\$2375
4958	35 lb	\$3800
495910	20 lb Repl. Ball	\$1980
M613	20 lb Repl. Bag	\$260
495810	35 lb Repl. Ball	\$3435
M614	35 lb Repl. Bag	\$280

PACER® STAINLESS STEEL HAMMERS

- Includes wire, handle and ball
- Meets NFHS, NCAA and IAAF specifications
- IAAF Certified

738940	4K	IAAF	95mm	\$156
738120	12 lb		103mm	\$167
738160	16 lb	IAAF	110mm	\$193

TURNED IRON HAMMERS

- Includes wire, handle and ball
- Meets NFHS, NCAA and IAAF specifications

3693	3K (6.6 lb)	\$62
36935	3.5K (7.7 lb)	\$63
3694	4K (8.8 lb)	\$66
36945	4.5K (9.9 lb)	\$71
3695	5K (11 lb)	\$77
3612	12 lb	\$74
3696	6K (13.2 lb)	\$80
3614	14 lb	\$81
3616	16 lb	\$82
3618	18 lb	\$92
3620	20 lb	\$98

TRAINING THROWING WEIGHTS

- Top quality turned iron
- Strong steel handle

3920	20 lb	\$197
3925	25 lb	\$237
3935	35 lb	\$263

ORBITER™ - LEAD

- Plastic injection NBR collar reduces damage potential and allows uninhibited rotation
- Sewn strap bag made out of double layered seatbelt polyester material
- Textured handle is the widest the rules allow for increased throwing performance
- 1 year warranty

4947	12 lb	\$259
4948	16 lb	\$273
4949	18 lb	\$291
4950	20 lb	\$332
4952	25 lb	\$343
4954	30 lb	\$353
4955	35 lb	\$436
495010	20 lb Repl. Ball	\$216
REPL620	20 lb Repl. Bag	\$89
495510	35 lb Repl. Ball	\$270
REPL635	35 lb Repl. Bag	\$103
491021	Repl. Handle, Black	\$38





PERFECT BALANCE SHOTS

- Engineered with exacting specifications for balance
- 100% sweet spot design gives uncompromised throwing distance
- Turned iron material for maximum durability
- Meets NFHS, NCAA and IAAF specifications

3894	4K	IAAF	108mm	\$169
3812	12 lb		115mm	\$192
3816	16 lb	IAAF	128mm	\$220

OFFICIAL
COMPETITION
REFERENCE GUIDE



PACER® STAINLESS STEEL SHOTS

- Machine turned for precision shape and weight
- Meets NFHS, NCAA and IAAF specifications, IAAF certified

735940	4K		95mm	\$126
735941	4K	IAAF	109mm	\$147
735120	12 lb		103mm	\$144
735160	16 lb		110mm	\$164
735163	16 lb	IAAF	129mm	\$200

High School Girls/Women: 4K
High School Boys: 12 lb
College Men: 16 lb



BRASS SHOTS

- Machine turned brass for unmatched design and feel
- Meets NFHS, NCAA and IAAF specifications

3594	4K		95mm	\$138
3512	12 lb		103mm	\$149
3516	16 lb		110mm	\$162

TRAINING SHOTS

- Cast iron material for maximum durability
- Uniform size of diameter allows for ideal training
- Keep the same size diameter as you train with variable weights



TS10830	3K		108mm	\$37
TS10835	3.5K		108mm	\$43
TS10845	4.5K		108mm	\$55
TS10850	5K		108mm	\$61
TS11510	10 lb		115mm	\$51
TS11511	11 lb		115mm	\$55
TS11513	13 lb		115mm	\$66
TS11514	14 lb		115mm	\$74
TS11516	16 lb		115mm	\$89
TS12813	13 lb		128mm	\$61
TS12814	14 lb		128mm	\$66
TS12815	15 lb		128mm	\$72
TS12817	17 lb		128mm	\$81
TS12818	18 lb		128mm	\$87
TS12820	20 lb		128mm	\$100



INDOOR SOFTSHELL SHOTS

- Polyvinyl plastic shell has softer feel for athlete preference
- Fine lead shot filled to exact weights
- Meets NFHS, and IAAF specifications, IAAF certified
- 1 year warranty

3106	6 lb		\$75
3193	3K (6.6 lb)		\$93
3108	8 lb		\$82
3194	4K (8.8 lb)	IAAF	\$84
3195	5K (11 lb)		\$109
3112	12 lb		\$98
3196	6K (13.2 lb)		\$115
3114	14 lb		\$109
3115	15 lb		\$118
3116	16 lb	IAAF	\$127
3118	18 lb		\$129



INDOOR HARDSHELL SHOTS

- Polyethylene shell will last season after season
- Fine lead shot filled to exact weights
- Meets NFHS, NCAA and IAAF specifications, IAAF certified
- 1 year warranty

3206	6 lb		\$75
3293	3K (6.6 lb)		\$83
3208	8 lb		\$85
3294	4K (8.8 lb)	IAAF	\$88
3210	10 lb		\$99
3295	5K (11 lb)		\$101
3212	12 lb		\$104
3296	6K (13.2 lb)		\$107
3214	14 lb		\$107
3215	15 lb		\$112
3216	16 lb	IAAF	\$120
3218	18 lb		\$132



CAST IRON SHOTS

- 4K and 12 lb shots guaranteed legal weight and size
- Meets NFHS, NCAA and IAAF specifications

3306	6 lb		\$19
3393	3K (6.6 lb)		\$21
3308	8 lb		\$22
3394	4K (8.8 lb)		\$26
3310	10 lb		\$31
3395	5K (11 lb)		\$33
3312	12 lb		\$33
3396	6K (13.2 lb)		\$38
3314	14 lb		\$43
3315	15 lb		\$44
3316	16 lb		\$45
3318	18 lb		\$52
3320	20 lb		\$57



TURNED SHOTS

- Machine turned for precision shape and weight
- Meets NFHS, NCAA and IAAF specifications, IAAF certified

34941	4K		100mm	\$67
34944	4K		104mm	\$54
34943	4K	IAAF	108mm	\$57
34121	12 lb		108mm	\$78
34122	12 lb		115mm	\$64
34161	16 lb		120mm	\$100
34162	16 lb		125mm	\$88
34163	16 lb	IAAF	128mm	\$74

THROWS

TRAINING & ACCESSORIES

SAVE MONEY WITH VALUEPACKS!



BOYS' THROWS HIGH SCHOOL

307	1.6K Gill Rubber Discus (1)
815	1.6K Gill Blue Discus (1)
309	1.6K Gill Red Discus (1)
82316	1.6K Gill Essentials Discus (1)
3312	12 lb Cast Iron Shot (1)
34121	12 lb, 108mm Turned Iron Shot (1)
931	Shot/Discus Carriers (2)

VP200 \$397

GIRLS' THROWS HIGH SCHOOL/COLLEGE

310	1K Gill Rubber Discus (1)
816	1K Gill Blue Discus (1)
312	1K Gill Red Discus (1)
82310	1K Gill Essentials Discus (1)
3394	4K Cast Iron Shot (1)
34941	4K, 100mm Turned Iron Shot (1)
931	Shot/Discus Carriers (2)

VP100 \$343



DISCUS CARRIER

- High quality vinyl discus carrier
- Features a plastic handle and convenient shoulder strap
- Holds 2 discuses or shot puts

931 \$15



JOJO SELF MARKING TRAINING DISCUS

- Economical training discus that marks the distance thrown
- Patented chamber emits self-marking chalk at landing
- Comes complete with discus, marking chalk, and chamber engagement tool

82610	1.0K	\$103
82616	1.6K	\$107
82620	2.0K	\$113



TRAINING DISCUS

- Customize your training with variable weight
- Easy and quick transition from weight to weight
- *Not competition legal, for training only*

812	0.85K~1.20K	\$109
811	1.40K~1.80K	\$123
810	1.75K~2.20K	\$149



SCHOLASTIC SHOT CARRIER

- Heavy woven polyethylene rope with plastic handle
- Holds 1 shot put

928 \$9.50

2-SHOT CARRIER

- Features a plastic handle and convenient shoulder strap
- Vinyl construction with snap top closure
- Holds 2 shot puts

929 \$17



DELUXE UNIVERSAL IMPLEMENT CARRIER

- Holds any of the three standard throwing implements
- Stores and protects: Shot Put (1), Discus (2), or Hammer (1)
- Great value to protect your throwing investment

9282 \$42



ADD ON WEIGHT

- Use for either hammer or indoor throwing weights
- Economical way to add variable weight to your training without buying more implements
- *Adjustable from .5 lb to 2.5 lb*

3603 Add on Weight \$25

SHOTS
 THROWING
 WEIGHTS
 DISCUS
 HAMMERS
 JAVELINS



*733100 Shown

NEW

INTERNATIONAL IMPLEMENT CARTS

- HDPE liners keep each implement separated and protected
- 8" never-flat rubber casters for easy movement over rough terrain
- Steel construction with durable powder coat finish

733100	Shot Cart (Holds 32)	\$1,405
733110	Throwing Weight Cart (Holds 20)	\$1,405
733200	Discus Cart (Holds 28)	\$1,405
733210	Hammer Cart (Holds 16)	\$1,405
733220	Javelin Cart (Holds 24)	\$1,405



TRACK WAGON™

- Conveniently haul a variety of track equipment
- Gates fold down for added convenience
- Large pneumatic tires for rugged terrain travel
- 500 lb capacity to haul even the heaviest of equipment
- 48" long x 24" wide x 12" deep x 25" tall

937 Track Wagon **\$268**



*9312 Shown

IMPLEMENT CARTS

9313	Shot Cart (Holds 24)	\$589
9314	Discus Cart (Holds 30)	\$589
9315	Javelin Cart (Holds 26)	\$589
9316	Hammer Cart (Holds 18)	\$589
9312	Discus/Shot/Hammer Combo Cart	\$707



HAMMER HANDLE (ALUMINUM GRIP)

32020 IAAF Approved **\$21**



HAMMER WIRES

32200	20" Wire	\$11
32300	30" Wire	\$11
32370	37" Wire	\$11
32375	37 1/2" Wire	\$11
32380	38" Wire	\$11
32385	38 1/2" Wire	\$11
32390	39" Wire	\$11
32395	39 1/2" Wire	\$11



USA HAMMER GLOVES

- Designed to endure the toughest throwers
- Seamless outside finger designed for unobtrusive fit
- High quality genuine leather

31918	Left	Small	\$21
31917	Right	Small	\$21
31919	Left	Medium	\$21
31922	Right	Medium	\$21
31920	Left	Large	\$21
31923	Right	Large	\$21
31921	Left	X-Large	\$21
31924	Right	X-Large	\$21



2K TURBO HAMMER

- Designed to teach beginner throwers fundamentals in a safe environment
- Made with durable rubber with Sharkskin grip
- Non-marking materials

TA1185 **\$108**

NEW

2K TURBO SHOT

- Designed to teach beginner throwers fundamentals in a safe environment
- Made with durable rubber with Sharkskin grip
- Non-marking materials

TA1184 **\$58**

THROWS

JAVELINS

CHOOSING A JAVELIN

STEP 1 Decide if you are purchasing a Rubber Tipped, 600g women's, or 800g men's javelin.

STEP 2 Consider the technical proficiency of the athlete. Javelin throwers who are skilled at flying the javelin will get farther throws when they throw through the point using OTE javelins. Throwers who occasionally miss accurate flights should switch between OTE and Pacer to help learn the fine points of flying the javelin. Beginners will learn quicker with Tru-Flight javelins, and if possible, should occasionally try an OTE to see if they understand how to really make it fly.

STEP 3 Once you have decided which javelin will best maximize your athlete's potential, choose a light, medium, or max relative flex javelin. Generally speaking, the stiffer the javelin, the longer the throw, assuming it is thrown precisely through the point.

THROW FURTHER

	ATHLETE'S ABILITY	JAVELIN FORGIVENESS
STIFF 4.4 FLEX 100M	High	Low
SOFT 12.6 FLEX 40M	Low	High

Use this chart for help on how to choose the best javelin. Call our experts at 800.637.3090 for more details.



The choice of elite throwers worldwide! OTE javelins are handmade in the USA by the master artisans who are following in the tradition of the world's greatest name in javelin development: Dick Held. The performance potential of OTE javelins is unsurpassed, being used for numerous championship wins and world records.



Nordic Sport javelins are a trademark among throwers worldwide. The Nordic javelins have been seen at the highest level, winning World Championship and Olympic medals. The materials and construction of the javelins is of the utmost importance. The Nordic Sport javelins are all manufactured with the famous Nordic finish and Nordic quality. Gill Athletics is proud to be the exclusive North American distributor of all Nordic javelins. Gill manufactures the elite OTE javelins, as well as the championship level Pacer javelins. Both Gill and Nordic provide different level javelins as well as rubber tipped javelins.



Built by the same master craftsmen that make the OTE javelins, Pacer javelins are built to slightly more generous tolerances. These javelins are built for performance and durability, and are suitable for high level competition. Pacer is the brand of choice for coaches seeking great value.



This lower price point line of javelins is recommended for high school level competition offering unsurpassed value. The best quality javelin for a budget-conscious program, Tru-Flight javelins allow athletes to have more efficient practice sessions by purchasing multiple javelins at nearly the same price as a singular higher-priced javelin!



CARBON 1™



Gill Athletics is privileged to announce our exclusive partnership with Countervail® to create the world's most technologically advanced javelin. The OTE Carbon 1 Countervail provides up to a 40% quicker damping rate which results in longer flights with minimal vibration.

The Carbon 1 Countervail is designed after the world-record setting OTE Legend tailwind javelin, and rooted in a patented design by the inventor of modern javelins, Dick Held. Featuring a flex of 4.4 and thicker grip cord for more support and control, this javelin will behave similar to old-rules javelins and appear to "float" when thrown clean.



THE **ONLY** SINGLE-PIECE
CARBON JAVELIN IN THE WORLD



CARBON FIBER
TECHNOLOGY



THICKER GRIP CORD FOR
MAXIMUM PERFORMANCE

OFFICIAL
PARTNER



OFFICIAL TRACK & FIELD
EQUIPMENT SUPPLIER

600G JAVELINS



2663H	Intermediate		Headwind	40m	7.2 flex	\$447
2663T	Intermediate		Tailwind	40m	7.2 flex	\$467
2684H	Special		Headwind	50m	6.9 flex	\$478
2684T	Special		Tailwind	50m	6.9 flex	\$499
2690H	Xtra		Headwind	60m	6.5 flex	\$509
2690T	Xtra		Tailwind	60m	6.5 flex	\$530
2695H	Competition		Headwind	70m	6.1 flex	\$540
2695T	Competition		Tailwind	70m	6.1 flex	\$561
2001H	Carbon 1		Headwind	80m	5.4 flex	\$1100
2001T	Carbon 1		Tailwind	80m	5.4 flex	\$1130



7961600	Comet Alu 600		Universal	12.1 flex	\$118
7925600	Viking 600		Universal	11.1 flex	\$218
7915600	Nordic Classic 600		Tailwind	8.5 flex	\$393
7917601	Diana Classic 600		Universal	7.2 flex	\$1005
7917602	Diana Classic 600		Headwind	7.7 flex	\$561
7917600A	Master Alu 600		Universal	7.9 flex	\$467
7917606C	Olympia Carbon 600		Universal	5.9 flex	\$1230
7917603C	Diana Carbon 600		Headwind	5.3 flex	\$1225



760005	Litania®	Light	40m	8.2 flex	\$259
760011	Comet 45	Medium	45m	7.4 flex	\$426
760012	Comet 55	Max	55m	7.0 flex	\$436



35064	Tru-Flight 40	Light	40m	8.6 flex	\$187
35065	Tru-Flight 50	Medium	50m	8.3 flex	\$207



HEADWIND VS. TAILWIND



HEADWIND (H) A headwind version of an OTE javelin describes a streamlined tip designed to help cut through the wind. This javelin tip, because of its small surface area, will have self-correcting characteristics when a thrower misses the point, adding valuable distance to a missed throw. The headwind version is ideal for 'power' throwers who lack perfect technique but make up for it with strength and torque.



TAILWIND (T) A tailwind version of an OTE javelin describes a thicker, more blunted tip that increases the surface area in front of the javelin. When a thrower hits the point with a tailwind version of an OTE javelin, it will mimic the old rules style javelins, with a beautiful floating flight and greater distances. This tailwind version is ideal for 'finesse' throwers who lack high outputs of power, yet throw at a high technical level.

800G JAVELINS



2860H	Intermediate		Headwind	60m	7.1 flex	\$502
2860T	Intermediate		Tailwind	60m	7.1 flex	\$533
2870H	Special		Headwind	70m	6.9 flex	\$540
2870T	Special		Tailwind	70m	6.9 flex	\$571
2890H	Xtra		Headwind	80m	6.7 flex	\$656
2890T	Xtra		Tailwind	80m	6.7 flex	\$687
2885H	Competition		Headwind	90m	6.3 flex	\$697
2885T	Competition		Tailwind	90m	6.3 flex	\$728
3001H	Carbon 1		Headwind	100m	4.4 flex	\$1100
3001T	Carbon 1		Tailwind	100m	4.4 flex	\$1130



7961800	Comet Alu 800		Universal	11.4 flex	\$135
7922800	Viking 800		Universal	10.4 flex	\$257
7912800A	Master Classic 800		Headwind	7.8 flex	\$589
7913800	Master 800		Universal	7.5 flex	\$552
7916802	Super Elite Classic 800		Tailwind	7.0 flex	\$935
7916800	Champion Steel 800		Headwind	6.4 flex	\$1125
7916803	Airglider Steel 800		Universal	6.1 flex	\$1195
7916808C	Orbit Carbon 800		Tailwind	5.0 flex	\$1255
7916800C	Champion Carbon 800		Headwind	4.8 flex	\$1265
7916803C	Airglider Carbon 800		Universal	4.5 flex	\$1265



780005	Litania®	Light	50m	8.7 flex	\$343
780050	Astro 50	Light	50m	7.8 flex	\$445
780060	Astro 60	Medium	60m	7.4 flex	\$451
780031	Astro 70	Max	70m	7.0 flex	\$458



35085	Tru-Flight 50	Light	50m	8.6 flex	\$207
35086	Tru-Flight 60	Medium	60m	8.3 flex	\$218
35087	Tru-Flight 70	Max	70m	7.7 flex	\$228





600G RUBBER TIPPED JAVELINS



2663R	Intermediate RT	40m	7.2 flex	\$447
2690R	Xtra RT	60m	6.5 flex	\$509



7968600	Classic Alu RT 600	Light	8.8 flex	\$193
7955600	Javelin High School 600	Universal	Medium	\$291
7965600	Javelin HS Diana 600	Universal	Max	\$374



760055R	Litania® RT	40m	8.2 flex	\$259
760211R	Comet 45RT	45m	7.4 flex	\$426
760212R	Comet 55RT	55m	7.0 flex	\$436



35164R	Tru-Flight 40RT	40m	8.6 flex	\$187
35165R	Tru-Flight 50RT	50m	8.3 flex	\$207

RUBBER TIPPED STATES: ALABAMA, NEW JERSEY, NORTH DAKOTA, AND WASHINGTON



800G RUBBER TIPPED JAVELINS



2860R	Intermediate RT	60m	7.1 flex	\$502
2870R	Special RT	70m	6.9 flex	\$540
2890R	Xtra RT	80m	6.7 flex	\$656



7968800	Classic Alu RT 800	Light	8.7 flex	\$234
7952800	Javelin High School 800	Universal	Medium	\$322
7916822	High School Master 60 800	Universal	Medium	\$374
7962800	Javelin HS Elite 800	Universal	Max	\$486
7916902	High School Master 70 800	Universal	Max	\$383



780055R	Litania® RT	50m	8.7 flex	\$343
780250R	Astro 50RT	50m	7.5 flex	\$429
780260R	Astro 60RT	60m	7.4 flex	\$439
780033R	Astro 70RT	70m	7.0 flex	\$458



35185R	Tru-Flight 50RT	50m	8.6 flex	\$207
35186R	Tru-Flight 60RT	60m	8.3 flex	\$218

500G JAVELINS

750005	Masters Plus	Light	40m	\$386
7925500	Viking 500	Light	11.6 flex	\$197
7961500	Comet Alu 500	Light	12.6 flex	\$113

700G JAVELINS

770005	Masters Plus	Light	45m	\$419
7914703	Super Elite 700	Medium	6.8 flex	\$907
7914706	Master 700	Medium	7.4 flex	\$514
7924700	Viking 700	Light	10.7 flex	\$234

2780T	OTE Tailwind	80m	\$523
2780H	OTE Headwind	80m	\$499

J-FORCE TRAINING JAVELINS



- 700g weighted training javelin designed with 800g dimensions
- 700g is the ideal tool for injury recovery training
- 900g weighted training javelin designed with 800g dimensions
- 900g is the perfect tool for specific strength adaptation

780700	700g Training Javelin	\$519
780900	900g Training Javelin	\$571



NOCKEN BALLS

- Designed to give you the look and feel of a javelin while throwing indoors

TA105	400g	\$21
TA100	600g	\$28
TA101	800g	\$33
TA1010	1K	\$38



OUTDOOR THROWING BALLS

- Technique and arm speed training balls. For outdoor use.

TA113	400g	\$16
TA114	600g	\$18
TA115	800g	\$19
TA116	1K	\$21
TA117	1.5K	\$22
TA118	2K	\$22



INDOOR THROWING BALLS

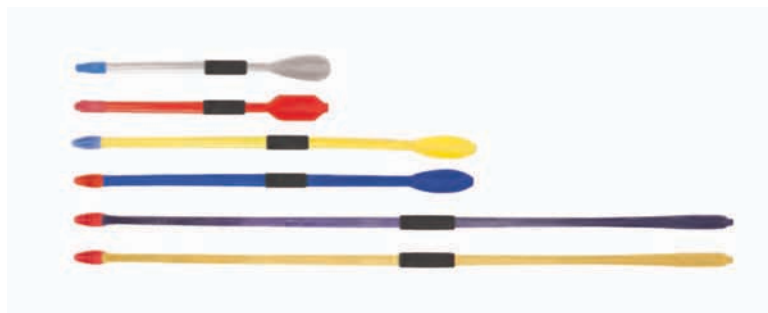
- Technique and arm speed training balls. For indoor use.

TA102	500g	\$18
TA103	600g	\$20
TA104	800g	\$29
TA1041	1K	\$32
TA1042	1.6K	\$34
TA1043	2K	\$35

PETRANOFF JAVELINS

- Designed by former world record holder Tom Petranoff (99.72m)
- Advance from 300g to 800g model

TA1193	300g Stubby	\$42
TA1194	400g Stubby	\$45
TA1195	500g Long Tom	\$52
TA1196	600g Long Tom	\$56
TA1187	700g Turbo Spier	\$82
TA1188	800g Turbo Spier	\$78



INDOOR TRAINING JAVELINS

- Air drag cones increase resistance to shorten throw for indoor facilities
- Aluminum shaft with rubber tip for maximum durability

TA1198	600g	\$121
TA1199	800g	\$122



ALL SURFACE TRAINING JAVELINS

- Designed for indoor, outdoor, turf and more surfaces
- Get the balance and weight of a competition implement with a durable metal shaft and real grip cord
- Cost effective way to get more practice implements in your training inventory

34610	600g	\$87
34710	700g	\$87
34810	800g	\$87
34910	900g	\$87

REAL GRIP CORD!



JAVEE JAVELIN TRAINER

- Excellent training aid to develop javelin specific strength, flexibility, range of motion
- Use for static and dynamic stretching and warm up routines
- Improve functional length limits for reduced chance of muscle and tendon injuries
- Variable resistance provided by three strong elastic cords
- Grip diameter specific to 600g and 800g sizes

TA1820	600g	\$74
TA1821	800g	\$74



ARCHY ALL SURFACE TRAINING MAT

- Specifically designed to help isolate the shoulder for javelin-specific exercises
- Three different sides create a multi-use training tool for core, flexibility, and technique
- Anti-skid material on bottom of Archy

TA2000	\$425
--------	-------

THROWS

TRAINING & ACCESSORIES



OTE™ DELUXE JAVELIN BAG

- Holds up to six javelins
- Two hardshell inserts wrapped in 1/4" lightweight closed cell foam to protect your investment
- Soft rubber handles and seams held with strong 2" webbing
- Men's length 9'; Women's length 8'

700706	600g Bag	\$519
700708	800g Bag	\$551



PACER® ADJUSTABLE BAG

- Holds three to five javelins
- Heavy duty Cordura nylon for durability
- Universal fit adjusts between 600g and 800g javelins

700801 \$123



HARDSHELL JAVELIN TUBE

- Holds five to seven javelins
- ABS plastic material gives piece of mind when transporting valuable javelins
- Universal fit adjusts between 600g and 800g javelins

700804 \$114



JAVELIN BACK BRACE

- Used by javelin throwers around the world
- Supports throwers and helps them throw far and safe

4581 \$34



NORDIC BACK BRACE

1086292	S, 22" - 28.5"	\$161
1086293	M, 28" - 34.5"	\$161
1086294	L, 34" - 40.5"	\$161
1086295	XL, 40" - 46.5"	\$161
1086296	XXL, 46.5"+	\$161



NORDIC ELBOW BRACE

1086392	S, 7.5" - 9"	\$75
1086383	M, 8.5" - 12"	\$75
1086384	L, 11.5" - 14"	\$75
1086395	XL, 13.5" - 15"	\$75

IMPLEMENT ACCESSORIES & KITS



ESSENTIALS™ IMPLEMENT SCALE

- Large 55 lb capacity scale with 'easy press' buttons
- Includes digital auto calibration and full range tare/zero function
- Read out in English or Metric system

93010 *Essentials™ Implement Scale* **\$104**



GILL® IMPLEMENT SCALES

- Quickly, easily and accurately measure the weight of any track implement
- Works for javelin, discus, hammer, shot, and indoor weight
- Easy zero reset for calibration prior to weighing
- Read out in English or Metric system

93015	<i>Up to 15K/33 lb</i>	\$415
93020	<i>Up to 20K/44 lb</i>	\$714
93021	<i>Scale Ring</i>	\$22



IMPLEMENT CERTIFICATION KITS

- Official-friendly redesign assures each implement meets specifications
- Each gauge is laser cut stainless steel for extreme accuracy and permanency
- Labeled tabs on each gauge helps organize the process
- Redesigned hammer gauge is easier to use and more durable
- Javelin diameter gauge will not damage javelins like old-style javelin gauges from competitors
- Self-contained unit packaged in one convenient wheeled case; including hammer gauge

93050	<i>High School Certification Kit (1K, 1.6K discuses; 4K, 12 lb shot put)</i>	\$1315
93065	<i>Javelin Certification Kit (all javelin competitions)</i>	\$1200
93075	<i>NCAA Certification Kit (1K, 2K discuses; 4K, 16 lb shot put; 4K, 16 lb hammer; all javelin competitions)</i>	\$3405
93080	<i>IAAF Certification Kit (1K, 1.5K, 1.75K, 2K discuses; 4K, 5K, 6K, 16 lb shot put and hammer; all javelin competitions)</i>	\$3795



INDOOR THROWING WEIGHT GAUGE

- Easily check the length of indoor weight throw implements
- Adjustable knob assists in the quick calibration of the gauge before each use

93035 **\$291**



SHOT/HAMMER RETRIEVER

- Ideal for quick, painless pick-up of shots and hammers
- Multi-adjustment height for ergonomic use

940 **\$36**

SHOT AND DISCUS MARKERS

- Large three square-inch writing surface
- Ample room to write athlete's name or number
- Extra strong pointed base for fast placement
- 7 ½" long
- 18 gauge steel

932W	<i>Marker</i>	\$5.25/ea
932W12	<i>Markers (12)</i>	\$32/set



MEETS

MEASURING DEVICES



SECTOR LINE MARKING TAPE

- Makes sector setup quick and easy
- Rolls out using dispensing spool and secures to grass with ground staples
- Kit includes: 2 rolls of white tape, 2 dispensing spools, and 20 ground staples

865 Complete Kit **\$128**

8651 Dispensing Spool **\$17**

8652 Staples (10) **\$13**

8653 130 yds. White Tape **\$46**

8654 130 yds. Orange Tape **\$46**

8655 130 yds. Yellow Tape **\$46**



STEEL MEASURING TAPES

- Coated with durable epoxy finish
- **C = closed reel; O = open reel**

980 50' (15m) C **\$25**

981 100' (30m) C **\$35**

983 300' (90m) O **\$96**

971 330' (100m) O **\$100**

MEASURING TAPE KIT

For all your measuring needs, includes:

- 988 (1)
- 985 (2)
- 984 (1)

982 Measuring Tape Kit **\$86**



FIBERGLASS MEASURING TAPES

- Vinyl coated fiberglass tape with high tensile strength for durability
- More flexible than cloth tapes and won't kink or break when twisted or stepped on
- Measures in both English and Metric units
- **C = closed reel; O = open reel**

984 50' (15m) C **\$11**

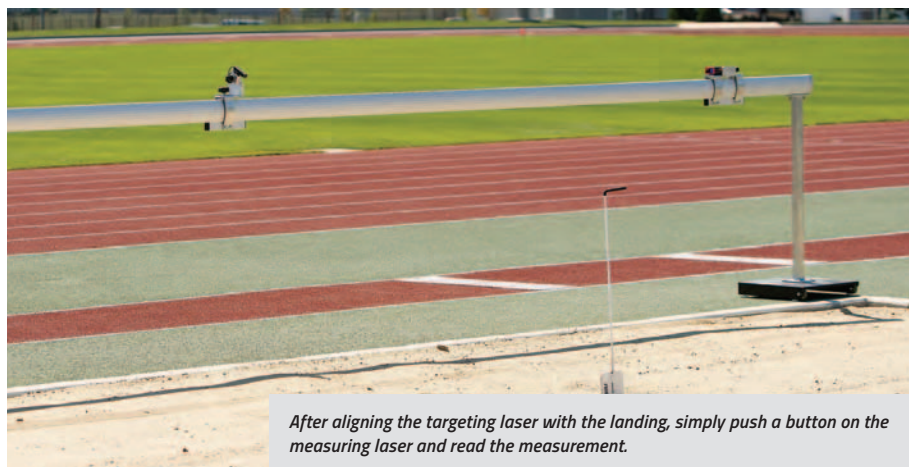
985 100' (30m) C **\$16**

987 165' (50m) C **\$23**

986 200' (60m) O **\$30**

988 300' (90m) O **\$46**

989 330' (100m) O **\$50**



After aligning the targeting laser with the landing, simply push a button on the measuring laser and read the measurement.

LASER LJ/TJ MEASURING DEVICE

- Simply align the targeting laser with landing, push the button, and read the measurement
- Improved green targeting laser for improved visibility on sunny days
- Measures in English or Metric units
- Rail is aluminum with sturdy steel wheeled bases

E73730 **\$3120**



LASER DISTANCE MEASURING SYSTEM

- Accurate laser measuring device for horizontal and vertical jumps as well as throws
- Center the mounted laser after each attempt and aim at the target
- Accurate readings to the nearest 1/8"
- Fully compliant with NFHS, NCAA and IAAF specifications

E737 **\$3215**

EVERYTHING YOU NEED IN ONE SIMPLE PACKAGE

ETHERLYNX VISION™ CAMERA PACKAGES BY LYNX

- **All packages contain everything you need.** Each package is a complete photofinish and timing solution for your track meets. All you add are the athletes and a computer!
- **All systems can run on any Windows computer** equipped with an Ethernet connection
- **All systems include the new FinishLynx EASYALIGN™ technology** that shows a full-frame video view of the finish line for fast and accurate camera placement
- **All systems take full color pictures** for easier athlete identification
- **All systems use power-over-Ethernet**, so no dedicated AC power is required at the camera location. A single Ethernet cable transfers all data AND provides camera power
- **All packages include LYNXPAD Meet Management software** - this integrates with multiple online meet entry websites, including Athletics.net and DirectAthletics.com



THE SCHOLASTIC SOLUTION

- 5L510 EtherLynx™ Camera
- 600 Standard Frame Rate
- 6mm fixed lens

INCLUDES:

All camera connection and power cables

Custom FinishLynx Carrying Case

Tech Support & 1-year renewable warranty

Camera Tripod and mounting hardware

FinishLynx Lite software with support for RadioLynx Wireless Start (E39916)

E39905 \$5000

THE BRONZE SOLUTION

- 5L500 Vision EtherLynx™ Camera
- 1000 Standard Frame Rate
- Manual Zoom lens

INCLUDES EVERYTHING FROM THE SCHOLASTIC SOLUTION, PLUS:

Full FinishLynx32 software with support for RadioLynx Wireless Start (E39916), Lynx Software Plug-in(s), multiple FinishLynx Cameras, IdentiLynx 2-D video camera, scoreboard interface for display of running time & results, and wind gauge interface for automatic wind reading data import

E39906 \$7500

THE SILVER SOLUTION

- 5L500 Vision EtherLynx™ Camera
- 2000 Standard Frame Rate
- Motorized Zoom lens

INCLUDES EVERYTHING FROM THE BRONZE SOLUTION, PLUS:

Automatic capture & virtual photocell plug-in

High resolution (2000 fps) images

Remote positioner (remote camera adjustment)

Motorized lens (remote lens adjustment)

E39903 \$11300

THE GOLD SOLUTION

- 5L500 Vision EtherLynx™ Camera
- 2000 Standard Frame Rate
- Motorized Zoom lens

INCLUDES EVERYTHING FROM THE SILVER SOLUTION, PLUS:

RadioLynx Wireless Start System

Power over Ethernet network switch

IdentiLynx full frame video camera

9-digit alphanumeric scoreboard

E39901 \$17000

THE MVP SOLUTION

- 5L500 Vision EtherLynx™ Camera
- 2000 Standard Frame Rate
- Motorized Zoom lens

INCLUDES EVERYTHING FROM THE GOLD SOLUTION, PLUS:

IAAF approved sonic wind gauge

A second 1000 fps 5L500 Vision EtherLynx™ camera (reverse angle/alternate finish line)

E39920 \$25000

* FinishLynx Systems are licensed and cannot be returned.

ELECTRONICS & INDICATORS



OFFICIAL EQUIPMENT SUPPLIER TO THE
2019 TRACK & FIELD CHAMPIONSHIPS

TIMER AND DISPLAY

- Lightweight with rugged rubber bumpers for increased durability
- Countdown timer has various pre-programmed times
- Three brightness intervals adjust to your specific needs
- Also used as an elapsed time clock for CC, road races, and the track
- Countdown can be set for durations up to 99 minutes
- Anti-glare 6" x 3" digits
- Includes tripod, 120V adapter plug, and 12V internal battery
- External battery can be connected if needed
- Connect to Gill Ultrasonic Wind Gauge to display wind reading continuously or at 10 second intervals

E49821	<i>Single Sided</i>	\$1075
E49822	<i>Double Sided</i>	\$1450
E39820B	<i>Optional External Battery</i>	\$78
E39824	<i>Replacement Tripod</i>	\$80



ULTRASONIC WIND GAUGE 2.0

- Redesigned for ultimate ease and accuracy
- Highly visible backlit display improved for officials accuracy
- Use as standalone, or designed for smooth interface with Lynx systems
- Special cable from Lynx required for Lynx interface
- Includes tripod, AC adapter, and padded protective case
- IAAF: ultrasonic wind gauges shall be used at all International Competitions (Rule 1.1 (a) through (h))

E49810 **\$2410**



COMPACT WIND GAUGE KIT

- When interface with timing system is not required, Compact Wind Gauge Kit is a cost friendly alternative
- Meets requirements for NFHS and NCAA wind gauge rules
- Includes tripod and carry case

E39815 **\$385**



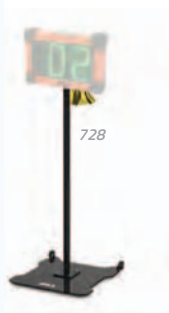
COMPACT WIND INDICATOR

- Designed to indicate relative strength of wind at point of use
- Unintrusive economical design, gets the job done without breaking the budget
- Guides athletes to jump safer (pole vault) and farther (long jump/triple jump)

726 **\$161**



E49872



728

2 DIGIT ELECTRONIC DISPLAY

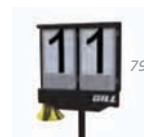
- Multi-use electronic display upgrades your facility and saves your budget!
- Use as a PV standard indicator, wind reading indicator unit, or lap counter.
- 6" digits with 3 stage dimming feature
- Quality carry/storage case included
- Lap Counter Display Stand sold separately

E49872 2 Digit Electronic Display **\$535**

728 Lap Counter Display Stand **\$311**



79200



79300



79400



79100

PERFORMANCE INDICATORS

- 9" numerals
- Rotates 360° for visibility
- Aluminum construction with steel roll away base
- Powder coated black

79300 2 Digit Lap Counter w/ Bell **\$640**

79400 2 Digit Pole Vault Display **\$715**

79100 4 Digit Scholastic Performance Indicator **\$600**

79200 5 Digit National Performance Indicator **\$955**


 LYNX COMPATIBLE
 EAGLE EYE COMPATIBLE

LED SCROLLING DISPLAY

- Displays event standings, upcoming races and more
- Update information easily with provided software
- Software is designed to run in background when using Lynx, scrolls track event times/places as Lynx System files results
- Sixteen 4" tall characters maximum displayed at one time
- Power options: 120V power cord (included) or 12V battery (sold separately)
- Carrying case included

E39860 Scrolling Display **\$2165**

E39820B 12V Battery **\$78**

E39855 Replacement Tripod for Single Unit **\$278**


 LYNX COMPATIBLE
 EAGLE EYE COMPATIBLE

GILL 9" DIGIT RACE CLOCKS

- Six digit race clocks in 9" digit options
- Count-up/count-down capability in seconds or hundredths of seconds
- Features end-mounted controls for direct operation
- Power options: 120V AC (included) or external 12V battery (sold separately)
- Optional carrying case available (sold separately)
- Tripod and remote control included

E39851 Race Clock **\$1665**

E39853 Double-Sided Race Clock **\$2340**

E39858 Carrying Case **\$503**

E39820B 12V Battery **\$78**

MEETS

TRACK ACCESSORIES



LJ & TJ TAKE OFF BOARD MARKERS

- Guides athletes to the horizontal jumps take-off board
- Made of safe collapsible plastic material

730310 \$103/set



GILL® LANE MARKERS

- Lightweight markers are easy to stack and carry
- Stable 3-sided design provides great visibility
- Convenient hand hole for quick set up
- 28" tall

730320 Lanes 1-8 \$1040/set

730329 Lane 9 Only \$155/ea

7303210 Lane 10 Only \$155/ea

CONE MARKERS

- Durable, flexible PVC

F451 2" \$2 999 12" \$9

975 4" \$5 976 18" \$13

TA9756 6" \$5



HORIZONTAL DISTANCE INDICATOR BOARDS

- Visual gauge of jump distance
- Made of safe collapsible plastic material
- Lightweight for easy transportation and storage
- Custom graphics available for additional charge

730721 LJ Boards English (16'-30') \$478

730722 LJ Boards Metric (5m-9m) \$478

730741 TJ Boards English (38'-55') \$582

730742 TJ Boards Metric (12m-17m) \$582

BATONS

Individual	\$4	Set of 8	\$31
43101	Gold	431018	Gold
43102	Orange	431028	Orange
43104	Silver	431048	Silver
43105	Red	431058	Red
43106	Purple	431068	Purple
43107	Green	431078	Green
43108	Blue	431088	Blue
43109	Black	431098	Black
433	White Plastic	430	Assorted



GILL® DISTANCE MARKERS

- Lightweight durable plastic material
- Stable 3-sided design provides 360 degree visibility
- 18" letter height

Individual Markers \$124

730512 12m/39' 730530 30m/98'

730514 14m/46' 730540 40m/131'

730516 16m/52' 730550 50m/164'

730518 18m/59' 730560 60m/197'

730520 20m/66' 730570 70m/230'

730522 22m/72' 730580 80m/262'

730524 24m/79' 730590 90m/295'



SCHOLASTIC DISTANCE MARKERS

- Ultra light expanded vinyl material
- 13" x 16" with quick stack & light carry characteristics
- 11" letter height

941 Set of 13 \$499

Individual Markers \$39

941030 30" 941100 100'

941035 35' 941120 120'

941040 40' 941140 140'

941045 45' 941160 160'

941050 50' 941180 180'

941055 55' 941200 200'

941060 60'



TEAR TAG NUMBERS

- Made of Tyvek® material for unsurpassed durability
- 7 1/2" x 7 1/2" numbers feature a 3 1/4" numeral and 2" detachable tag
- **Sets of 100**

92300	#001-100	\$39
92301	#101-200	\$39
92302	#201-300	\$39
92303	#301-400	\$39
92304	#401-500	\$39



CUSTOMIZED COMPETITOR'S NUMBERS

- Feature your school name and/or event
- Made of Tyvek material for unsurpassed durability
- **Sets of 100**

730400	5 1/2" x 7 1/2"	\$57/set
730410	7 1/2" x 7 1/2" * * with Detachable Tag	\$62/set



HIP NUMBERS

- Necessary for photo finish timing
- 3 1/2" digit on a 4" x 3" label
- No-residue adhesive labels

921	Hip Numbers 1-9 (25 of each)	\$23/set
922	Hip Numbers 1-18 (25 of each)	\$35/set

SAFETY PINS

910	144 ct.	\$10
91010	1440 ct.	\$50

COMPETITOR'S NUMBERS

- Made of 100 lb 'Tuff Tear' paper tag stock
- 5 1/2" x 8 1/2"
- **Sets of 100**

Competitor's Numbers		\$15/set
900	#001-100	903 #301-400
901	#101-200	904 #401-500
902	#201-300	909 #901-1000



INDIVIDUAL HIP NUMBERS

Sets of 100		\$10	Rolls of 250		\$21
92101	#1	92110	#10	92201	#1
92102	#2	92111	#11	92202	#2
92103	#3	92112	#12	92203	#3
92104	#4	92113	#13	92204	#4
92105	#5	92114	#14	92205	#5
92106	#6	92115	#15	92206	#6
92107	#7	92116	#16	92207	#7
92108	#8	92117	#17	92208	#8
92109	#9	92118	#18	92209	#9
				92210	#10
				92211	#11
				92212	#12
				92213	#13
				92214	#14
				92215	#15
				92216	#16
				92217	#17
				92218	#18

BEST VALUE!



SPIKE KIT

Storage case and 1500 spikes

- 4 x 842 spikes
- 3 x 840 spikes
- 2 x 83602 spikes
- 2 x 83601 spikes
- 2 x 843 spikes
- 2 x 838 spikes
- 1 x 846 t-handle wrench

850 \$156



STEELEX SPIKES

- Case hardened steel with blue coat provides extreme durability and extended life
- Hex-base for easier installation and removal
- Bags of 100

83500	1/4" Spike Wrench	\$11
83511	Spikes: 1/8"	\$15
83512	Spikes: 3/16"	\$15
83513	Spikes: 1/4"	\$15
83514	Spikes: 3/8"	\$15



PYRAMID **NEEDLE** **BLANK**

SPIKES

Bags of 100, unless otherwise noted

842	Pyramid: 1/4"	\$11
8401	Needle: 1/8"	\$11
83601	Needle: 3/16"	\$11
838	Needle: 1/4"	\$11
839	Needle: 3/8"	\$11
840	Pyramid: 1/8"	\$11
83602	Pyramid: 3/16"	\$11
841	Pyramid: 1/2"	\$11
843	Pyramid: 3/8"	\$11
844	Pyramid: 5/8"	\$11
848	Blanks	\$11
837	Javelin: 1" (20 ct.)	\$11



SPIKE WRENCHES

845	3-Way	\$5
846	T-Handle	\$12
849	Spike Gauge	\$29

45W MEGAPHONE

45W Megaphone with range of up to 800 meters.
Requires 10 "D" batteries (17 hours of use. Not included).



731

\$460

ELECTRONIX STARTING DEVICE

- Battery operated starting pistol eliminates the need for blanks
- Pistol comes with auxiliary cable and case
- Strobe light tip flashes when the gun is fired to offer a visual signal for hand timing
- Uses three "AA" batteries (not included)
- Connects to a megaphone or speaker to sound (not included)
- *FinishLynx and Eagle Eye compatible!*

E39846

\$228



STARTING BLANKS

42701	.22 Cal. Crimped (100 rds.)	\$42
429	.32 Cal. Gator Blanks (50 rds.)	\$63
42801	.32 Cal. Crimped (100 rds.)	\$94
39603	Pyro Bright Shells (50 rds.)	\$58

ALFA COMPETITION STARTING PISTOLS

- Zinc-aluminum frame finished in rust resistant nickel
- High strength heat-treated steel parts promise trouble free usage
- Bright orange grips and barrel cap eliminate confusion with a firearm
- Rugged and reliable with swing out 6-round cylinder for easy load and unload
- *Limited Lifetime warranty*

425 .22 Cal. Pistol \$323

426 .32 Cal. Pistol \$332

GILL® COMPETITION STARTING PISTOLS

- Inexpensive yet durable starting pistols
- Feature free spinning cylinder necessitating to cock the hammer before firing
- Holds 8 rounds

42510 .22 Cal. \$115

42610 .32 Cal. (holds 5 rds.) \$123



STARTING PISTOL HOLSTER

Keep your gun safe and convenient. Attaches to your belt.

42310

\$32



MEGAPHONE

Adjustable volume with trigger on/off switch. Uses eight "AA" batteries, not included.

732

\$124



STARTERS SLEEVE

Highly visible from any part of the track. Bright orange with elastic at both ends for a sure fit.

423

\$10

TIMEKEEPING *FOR ANY SIZE EVENT*

ULTRAK L10 MULTI-LANE TIMER

- Compatible with Hytek Meet Management Software
- Times races with up to 10 lanes
- Times road races with up to 8,000 participants
- Prints bib number, lane, place, and time
- Includes linkgate, eliminating tangled cords to L10
- Includes Windows interface and 2 rolls of paper
- 2 year warranty**



SEIKO S149 STOPWATCH WITH PRINTER

- 300 dual split memory
- Saves multiple events into memory
- Large-sized 3 line display
- Auto start function
- Prints 13 digits per line at 1.5 per second
- Battery life indicator
- Includes 2 rolls of paper
- 3 year warranty**

37932	8-Lane Timer	\$782
37934	Extra Button	\$25
37935	Paper Refills (3)	\$29

MORE DETAILS

www.gillathletics.com/stopwatches

37801	Stopwatch and Printer	\$535
37805	Paper Refills (5)	\$13



ROBIC SILVER 2.0

- Event, lap or split timing
- 1/100 second precision to 10 hours
- Two finish time memory recall
- 1 year warranty**

37923 \$20



ULTRAK 310

- Functions: start, stop, reset
- Measures 10 hours
- 3 year warranty**

33106 Set of Six \$57



ROBIC SC-505W

- Twelve (12) memory recall
- Lap, split or single event timing
- 1/100 second resolution to 24 hours
- 1 year full factory warranty**

37603	Single	\$31
37604	Set of Six	\$175



ROBIC SC-606W

- 50 dual split memory recall
- Lap, split or dual split timing
- Multi-function countdown timer; stop, repeat or count-up modes
- 1 year full factory warranty**

37602 \$41



ULTRAK 830 HEAT INDEX

- Accurately calculates temperature, humidity, heat index and dew point
- 30 dual split recallable memory
- Measures to 10 hours with 1/100 second resolution
- Solar powered with back-up lithium battery
- 5 year warranty**

3830 \$45



BEST SELLER!

ULTRAK 495

- 100 dual split recallable memory
- Measures up to 10 hours
- Continuous display of event time
- Allow for split in recall mode
- Water resistant
- 5 year warranty**

37904	Black	\$49
37904Y	Yellow	\$49



ROBIC SC-899

- Up to 540 memory recall
- 3 fully loaded time keeping modes
- 1/100 second precision to 1 hour
- Speed timer in mph/kph
- On-demand EL backlight for low light or no light use
- Lithium battery
- 1 year warranty**

37611 \$69



ULTRAK BTS - BLUETOOTH

- Compatible with both Apple and Android smartphones
- 750 dual split memory recall, measuring to 10 hours in 1/100 second precision
- Countdown timer, pacer, stroke frequency and calendar functions
- 5 year warranty**

37912 \$108

TRACK ACCESSORIES



E39917 Shown



FINISH LINE TAPE

- Lightweight and easy to break
- 50 yd roll

974 \$5



INTERNATIONAL FINISH POSTS

- Heavy duty steel with folded square bases
- Wheeled bases for easy mobility
- Big, bold letters indicate finish for clear visibility

721 \$540



STARTER'S ROSTRUM

- Provides starting official with enough height to view all lanes
- Stable design for safety

860 \$850



E39918

CAMERA MOUNT POLE

- No pre-determined heights for custom settings

E39917 Portable \$1015

E39918 Ground Sleeve \$1015



TAPE STAKE KIT

- Handy tool attaches to end of measuring tape for convenient use
- Used for all throwing events and all horizontal jumping events
- Set of 4

970 \$41/set



TIMERS AND JUDGES STAND

- Holds 10 people seated or 20 standing
- Five rows of 48" long steps
- Rail support along back for safety
- Red enamel finish with galvanized seats, footrests and backrest
- Easy mobility provided by 8" diameter wheels on back

995 \$1400

TRACK MAINTENANCE



3-LANE TRACK GATE

- Discourage joggers from using three inside lanes causing premature and uneven wear
- Easy lift and rotate to allow training on inside lanes
- Locks into place
- Includes ground sleeve
- Available in custom color, see chart on page 87

8540	3-Lane Track Gate	\$1345
8540CXX	3-Lane Track Gate; color	\$1480
8540P	Track Gate Post Padding	\$121



CROSSOVER ZONE®

- Lighter and easier to handle than other 'conveyor belt rubber' systems
- Protects against steel tipped cleats, shoes and equipment wheels
- Rain drains through

493667	7.5' x 30'	\$987
493668	7.5' x 40'	\$1095
493663	15' x 30'	\$1180
493664	15' x 40'	\$1300
493651	15' x 75'	\$1630
493652	15' x 100'	\$1665
493653	15' x 125'	\$1875

TRACK REPAIR KITS

- Repair worn areas of track or field event area
- Includes 18.5 lb of rubber granules and 1 gallon of single-solution, no-mix polyurethane adhesive
- Approximate 11 sq ft coverage

8700	Black Repair Kit	\$513
8701	Red Repair Kit	\$513
8702	Royal Blue Repair Kit	\$513
8703	Green Repair Kit	\$513



INDOOR/OUTDOOR RUNWAY SURFACE

- Install quickly over worn runway or create a runway where none exists
- No bonding necessary, but can be done if required
- Custom Length (25' minimum) (no returns)

49036	10mm x 36"	\$7/ln ft
49048	10mm x 48"	\$9/ln ft
49136	12mm x 36"	\$8/ln ft
49148	12mm x 48"	\$10/ln ft



SURFACE ROLLER

452	Complete Roller	\$116
452R	Replacement Roller	\$70

PIT RAKE

451	Pit Rake	\$82
------------	----------	-------------

QUICKIE SAND PIT BROOM

453	Sand Pit Broom	\$46
------------	----------------	-------------

PIT SHOVEL

450	Pit Shovel	\$43
------------	------------	-------------

CROSS COUNTRY KIT

Includes: 24 chute posts, 2-110' lengths of chute rope with pennants, 9 directional flags (3 red, 3 blue, 3 yellow) and 9 flag poles.

960	<i>Complete Kit</i>	\$545
961	<i>4' Chute Post</i>	\$12/ea
962	<i>Chute Rope and Pennants (110')</i>	\$30
9650	<i>Flag Pole, Red Flag (Left Turn)</i>	\$38
9660	<i>Flag Pole, Blue Flag (Straight)</i>	\$38
9670	<i>Flag Pole, Yellow Flag (Right Turn)</i>	\$38
96501	<i>Replacement Red Flag (Left Turn)</i>	\$12
96601	<i>Replacement Blue Flag (Straight)</i>	\$12
96701	<i>Replacement Yellow Flag (Right Turn)</i>	\$12



TURF CHUTE POST

- 12 lb non-invasive chute posts are ideal for turf or golf course

968	<i>Turf Chute Post</i>	\$52/ea
962	<i>Chute Rope and Pennants (110')</i>	\$30

CROSS COUNTRY FINISH LINE BANNER

- Heavy duty vinyl banner attaches to fiberglass uprights
- Width is adjustable from 6'-12'
- Clearance height is 7'

969 **\$300**

CC PACE WHEEL

- Find your athlete's recent race/time trial in the 'Current Fitness' window and that's it!
- Pace wheel reveals aerobic base training pace, marathon race pace, lactate threshold pace, Vo2 max development intervals, and running economy repetitions

998 **\$18**

DISTANCE MEASURING WHEEL

- Handle Collapses for easy storage
- Lightweight, durable construction
- Measures up to 10,000 feet
- English Units Only

9703 **\$130**



ELECTRONIC MEASURING WHEEL

- Durable long-lasting steel frame
- Electronic 7-digit LCD readout is backlit for low light usage
- Patent-pending 'thumb-up' grip ensures less wrist strain and superior control

9701 **\$311**



DUAL XC MEASURING WHEEL & COURSE MARKER

- Measure and mark simultaneously
- Lightweight tool features a trigger under the pistol grip
- Trigger activates spray paint (not included)
- English units only

9702 **\$184**





TENT SHOWN: 955215 Tent Canopy, 955210S Side Wall (2),
955215S Side Wall, 955201 Custom Graphics

IMPACT TENTS

- Commercial grade steel frame
- 500 denier polyester canopy and walls
- Water, UV light, and fire resistant
- Roller bag: 600 denier polyester with scuff resistant and waterproof finish
- Tent stake kit and dust coverbag included
- Sidewalls, roller bags, and graphics sold separately

COLORS



TENT CANOPY

955210	10' x 10' Tent Canopy	\$725
955215	10' x 15' Tent Canopy	\$878
955220	10' x 20' Tent Canopy	\$1200

SIDE WALL

955210S	10' Solid Side Wall	\$129
955215S	15' Solid Side Wall	\$199

ROLLER BAG

955210B	10' Tent Roller Bag	\$87
955215B	15' Tent Roller Bag	\$119
955220B	20' Tent Roller Bag	\$133

CUSTOM GRAPHICS

Stand out from the crowd with custom screen printed graphics available in 1 to 5 locations! Tent graphic worksheet and vector graphics are all that is needed to show your team pride today! *Price covers 1 to 5 locations, per logo, per color.*

955201	Graphic 10" x 100"	\$349
955202	Graphic 40" x 60"	\$449
955203	Graphic 50" x 90"	\$599

ACCESSORIES

9552WB	Weight Bags (4) (Recommended)	\$59
--------	-------------------------------	------



TOTE BASKET

809 \$17



BOOKS

98901	T&F / XC Rules Book	\$13
98902	T&F Scorebook	\$22



STRIKEALERT

- Provides warning for strikes as far away as 40 miles
- Audible alarm and corresponding LED light illuminates to warn you of strike
- Comes with belt clip and runs on single AA battery for up to 100 hours

ELD1000 \$141



OFFICIALS' FLAGS

- Highly visible heavy duty nylon attached to a wooden dowel
- Flags measure 14" x 13"

730270	Red/White	\$17
730271	Yellow/White	\$17



POWERMAX® VERSA-HURDLE

- Built-in safety feature causes the hurdles to collapse upon impact
- Adjustable from 12" to 42"
- 18 gauge tube steel with durable gate board

100	Hurdle	\$42/ea
101	Versa-Hurdle Bag	\$23



FOAM TRAINING HURDLE

- Ideal training hurdle made of forgiving foam
- Heavy enough to remain upright, yet light enough to be completely portable
- Durable vinyl covering allows for indoor and outdoor use
- Heights: 30", 33", 36", & 39"

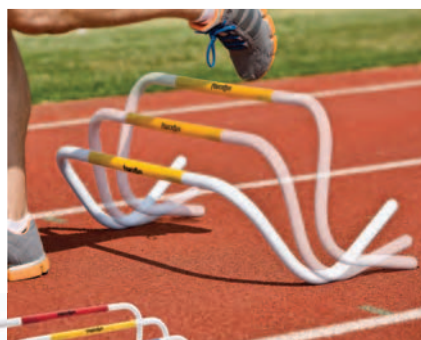
409 \$166



SMART HURDLE

Smart Hurdles have a three point base for superior stability on all surfaces. Smart Hurdles are durable, lightweight, and easy to carry.

TA18544	21-36" Adjustable Hurdle	\$76
TA18545	27-42" Adjustable Hurdle	\$86



AGILITY ROCKER HURDLES

Weighted base allows hurdles to rock back into the starting position.

TA1676	6" Hurdle	\$21/ea
TA1678	8" Hurdle	\$21/ea
TA16710	10" Hurdle	\$22/ea
TA16712	12" Hurdle	\$22/ea



STEP HURDLES

Constructed of durable, lightweight PVC tubing

TA167	6" Hurdle	\$12/ea
TA1675	6" Hurdles (5)	\$54/set
TA166	12" Hurdle	\$13/ea
TA1665	12" Hurdles (5)	\$61/set
TA16618	18" Hurdle	\$18/ea
TA166185	18" Hurdles (5)	\$88/set
TA16624	24" Hurdle	\$21/ea
TA166245	24" Hurdles (5)	\$99/set



VARIABLE HEIGHT STEP HURDLES

The 2-in-1 hurdle can quickly and easily be adjusted to 2 heights (8"-12") and folds flat for storage.

TA1662	2-in-1 Hurdles	\$13/ea
TA16625	Set of 5 with Bag	\$66
TA16601	Mesh Carry Bag (Holds 5 Hurdles)	\$7

The 3-in-1 step hurdle adjusts from (6"-12"-18") and may be disassembled for storage. Perform lateral agility moves, forward moves for speed, or plyometrics jumps.

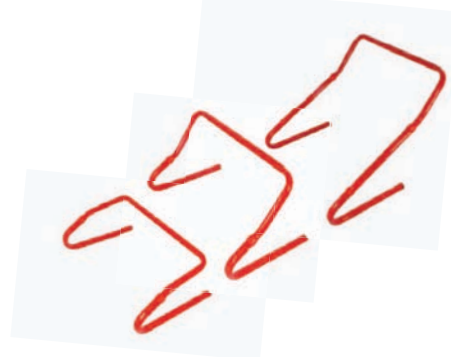
TA1663	3-in-1 Hurdles	\$36/ea
TA16635	Set of 5 with Bag	\$177
TA16601	Mesh Carry Bag (Holds 5 Hurdles)	\$7



STEP-UP BOX

Perform weighted step-ups safely on this adjustable box. Four height adjustments: 14", 16", 18", and 20". Reinforced plywood top is 20" x 28" and coated with artificial turf. Ships assembled.

WE160 14"H x 29"W x 28"L, 53 lb \$415



TRAINING

SPEED DEVELOPMENT

MAX BELT

- Features a 3" wide padded heavy-duty Cordura nylon
- Reinforced stitching
- Multiple nylon attachment loops
- Stainless steel hardware

TA1500	S-M (24" - 32" waist)	\$30
TA1501	L-XL (33" - 42" waist)	\$32
TA1503	XXL (43" - 52" waist)	\$33



BULLET BELT™ SYSTEM

- For resistance to improve starting and acceleration mechanics
- Hook & loop closure for easy release giving a contrast workout from resistance to free running
- Adjustable belt

TA138	Bullet Belt System	\$114
TA1382	Extra Belt	\$56

POP BELT™

- The Bullet Belt "Pop" release is the basic design in the Bullet Belt series
- Used to train explosive sport-specific skills

TA1383	\$68
--------	------

BULLET BELT SPEED PULLEY

This two-person over-speed trainer features a unique safety release if towed athlete cannot maintain pace. Comes with 30m of cord and a Bullet Belt universal web belt.

TA1381	\$187
--------	-------



RESISTANCE TETHER

- Improve speed with resistance running
- Harness attaches to 10' long nylon web cord with handle
- Includes nylon cord and a 3" wide hook & loop closure belt adjustable to 42" waist, and carry bag

TA150	\$44
-------	------

DUAL RESISTANCE TETHER

- One athlete runs while the other provides resistance
- Includes nylon strap attached to two 3" wide hook & loop closure belts adjustable to 42" waist, and carry bag

TA1521	\$46
--------	------

TIRE TETHER

- Can be used to drag tires of different sizes for varied workouts
- Includes nylon strap and hardware to attach tire, 3" wide hook & loop closure belt adjustable to 42" waist, and carry bag
- Tire not included

TA1384	\$51
--------	------





SPRINT START SLED

- Unique design provides for clearance over and around virtually all starting blocks
- Olympic style weight plates may be added to increase resistance. Includes sled, 11' leads, and 3" wide hook & loop closure belt adjustable up to 42" waist
- Designed by University of Idaho head coach Tim Cawley

TA1541 **\$321**



POWERMAX® VARIABLE RESISTANCE CHUTE

The PowerMax VR Chute features a hook & loop closure baffle panel that can be opened or closed to achieve desired resistance. Open the baffle for reduced resistance or close to increase it.

TA163M	S/M	Gray	\$62
TA163XL	L/XL	Black	\$75



POWERMAX® SLED

Provides lower body resistance that develops speed and strength for all athletes in all sports. Add the desired weight to determine resistance. Load up to 200 lb. 15" tall post fits 4 Olympic bumper plates. Includes sled, 11' leads, 3" wide hook & loop closure belt adjustable to 42" waist, and instructions. **Weights not included.**

TA154	Sled w/Belt	\$164
TA156	Sled and Shoulder Harness	\$169
TA15401	Additional Waist Belt	\$30
TA15403	Additional Pair of Leads	\$30
TA15601	Shoulder Harness and Leads	\$30



TC-TIMER SYSTEM

The TC-Timer is a wireless timing device that enables athletes and coaches to measure time, speed, count repetitions, input test data and save it all in the TC-Timer memory.

- Sends radio transmissions up to 1,000 feet
- Accurate to the 100th of a second
- Equipped with 5 different radio frequencies allowing multiple systems to be used in the same area
- All components fit neatly into a small lumbar pack

E38720	TC Timer System	\$1955
E38721	Pair, Additional TC Gates	\$823
E38724	Replacement Tripod	\$86
E38710	Speed-Trap 1 Timing System	\$813



LOW DRAG SPEED SLED

- Ideal sled to add incremental resistance to your athletes
- Easy storage
- Weighs less than 7 lb each
- Includes waist belt, nylon leads, carabiners and sled

TA157 **\$103**



POWERMAX® PUSH/PULL SLED

The PowerMax Push/Pull Sled is great for versatility and adjustability in speed training.

- USA made 11 gauge steel frame sled
- Space-saving design that is less than 7" high when folded
- Replaceable/removable runners for use on a variety of surfaces
- Quick release pins for fast set-up and breakdown
- Adjustable width push posts (12-21" W x 32" H) and multiple push/pull options
- Sled weighs 45 lb (empty)
- Holds up to 300 lb, center post fits four 45 lb bumper plates

TA155C12 Sled w/Belt + Harness
 24" W x 35" L x 35" H (w/post) **\$467**

JUMP TRAINING & TESTING



STANDING LONG JUMP TEST MAT

- Non slip mat provides a soft landing surface that makes marking the distance of the jump easy
- Both English and Metric units
- Heavy enough to prevent any sliding, rolls up for easy storage
- Measures jumps to 10' 5"

TA197 \$557



POWERMAX® ELECTRONIC VERTICAL JUMP TESTER

- Measures from 7' to 12' in ½" increments
- Light up dots on the height scale and digital display immediately show the exact jump height
- Data is downloadable to any computer
- Height decal offers quick "zero" marking
- Standing height measuring strip helps establish base height of reach prior to jump

TA199C12 \$2700



VERTEC MEASURING DEVICE

- An effective, easy-to-use jump training tool
- Measures from 6-12'
- Height scale and color coded vanes offer half-inch measurement for immediate feedback
- Handy, attachable rod to align or reset vanes

TA195 \$701

TAKE-OFF BOARDS & CURBING

PREPARE FOR TAKE-OFF WITH GILL BOARDS





ADJUSTABLE TAKE-OFF BOARD SYSTEMS

With the Gill Adjustable Take-Off Board Systems you get ease of installation, ease of use and dependable peak performance.

Gill Take-Off Board systems are the easiest and fastest boards to install in the market. **Complete system** comes with installation tray, adjustable folded aluminum base, reversible long lasting take-off board and foul board, and functional blanking lid ready to accept track surfacing.

- 8" take-off board and 4" foul board creates 12" system
- Exclusive easy-adjust leveling system for both horizontal and vertical axis
- Composite for longer lifespan
- Composite boards made of Polyboard®, an environmentally friendly, waterproof material that will not split or crack while offering jumpers great grip
- Meets NFHS, NCAA and IAAF specifications

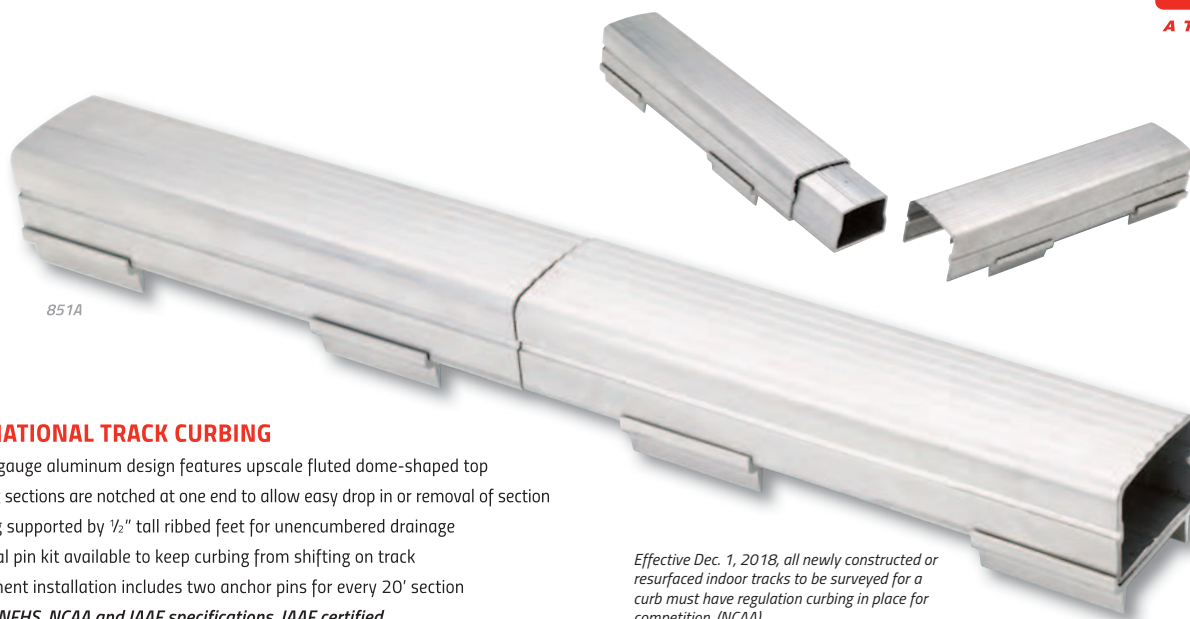
43505	Complete NCAA System	\$949
43515	Complete IAAF System 	\$982
P435007	Replacement 4" NCAA Foul Board	\$58
P435107	Replacement 4" IAAF Foul Board 	\$92
P435005	Replacement 8" Take-Off Board	\$149
P435205	Replacement 12" Take-Off Board	\$143
43525	12" Take-Off Board and Tray	\$483
P435008	Replacement Leveling Base Board	\$394
435021	Replacement 12" Blanking Board Assembly	\$439
P435015	Replacement 12" Installation Tray	\$206
439	1 lb Plasticine Brick - Yellow	\$7

STANDARD 8" TAKE-OFF BOARD SYSTEMS

- 8" take-off board system
- Complete system: Installation tray, aluminum leveling board and reversible take-off board
- Composite for longer lifespan
- Composite boards made of Polyboard®, an environmentally friendly, waterproof material that will not split or crack while offering jumpers great grip
- Blanking lid sold separately
- Meets NFHS and NCAA specifications

444S	Complete Standard 8" Take-Off Board System	\$441
44421	Blanking Lid Assembly	\$280
44405	Replacement Take-Off Board	\$214
P44402	Replacement Leveling Base Board	\$222
443	Replacement Installation Tray	\$386





INTERNATIONAL TRACK CURBING

- Heavy gauge aluminum design features upscale fluted dome-shaped top
- Curbing sections are notched at one end to allow easy drop in or removal of section
- Curbing supported by ½" tall ribbed feet for unencumbered drainage
- Optional pin kit available to keep curbing from shifting on track
- Permanent installation includes two anchor pins for every 20' section
- **Meets NFHS, NCAA and IAAF specifications, IAAF certified**

Effective Dec. 1, 2018, all newly constructed or resurfaced indoor tracks to be surveyed for a curb must have regulation curbing in place for competition. (NCAA)

NON-PERMANENT INSTALLATION CURBING

851A	Plain		\$10/ln ft
852A	Anodized		\$15/ln ft
852P	Powder Coated		\$13/ln ft
851P	Base Pins (12)		\$177/set

PERMANENT INSTALLATION CURBING

853A	Plain		\$11/ln ft
854A	Anodized		\$15/ln ft
854P	Powder Coated		\$15/ln ft

CUSTOMIZABLE

Powder Coat



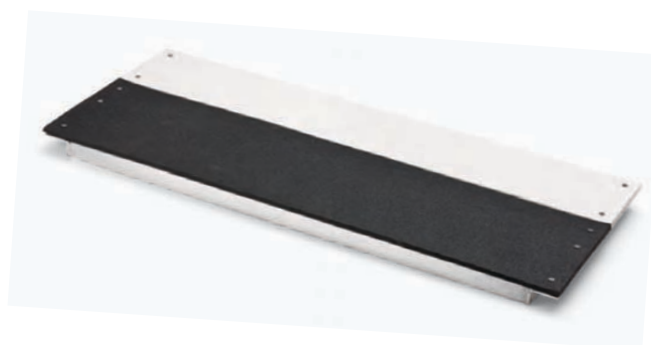
*Gray and Black powder coat available in Gloss or Flat



19.5" TAKE-OFF BOARD SYSTEM

- Complete System: Installation tray, aluminum base board, and reversible take-off board
- Composite for longer lifespan
- Composite boards made of Polyboard®, an environmentally friendly, waterproof material that will not split or crack while offering jumpers great grip
- **Meets NFHS specifications**

441TS	Complete HS System	\$496
44105	Replacement 19 ½" Take-Off Board	\$124
442	Replacement Installation Tray	\$474



CONVERSION BOARD

- Convert a Gill 19 ½" take-off board system to an 8" system
- Includes 8" composite take-off board, black vultrak, and baseboard

441C \$321

SAND PIT FORMS & COVERS

Sand pit forms hold more than just sand, they hold value. With four different options of Sand Catcher locations and two practical Sand Catcher Cover options, you can design the horizontal jump facility that will perfectly meet your needs.

Choose from one of four sand catcher locations: no sides, two sides, two sides and back, or all four sides. Choosing Sand Catchers on the sides will cut unnecessary costs and eliminate potential trip hazards, providing more than ample storage space for overflow sand.

Choose from one of two Sand Catcher Cover systems: traditional grate and mat or Gill (exclusive) Recessed Lid. When you consider the main function of a Sand Catcher system is not to catch sand but to store it, the Recessed Lid system is rapidly becoming the choice of facilities worldwide, as it is designed to receive track surfacing to match your track facility. When coupled with the 730148 Aluminum Sand Pit Cover, a complete logical design emerges for your world class jumps facility.

No matter which combination you choose; with the Gill Functional-Form, you can rest assured that you have chosen the finest product (with the easiest installation) available.

FORM WITH RECESSED CATCHERS

4 SIDES	F46225	25'	\$19450
	F46228	28'	\$21090
	F46231	31'	\$21855
3 SIDES	F46124	24'	\$16170
	F46127	27'	\$16940
	F46130	30'	\$18905
2 SIDES	F46023	23'	\$13555
	F46026	26'	\$15520
	F46029	29'	\$16720

FORM WITH GRATE & MAT CATCHERS

4 SIDES	F44225	25'	\$18575
	F44228	28'	\$20760
	F44231	31'	\$21425
3 SIDES	F44124	24'	\$15435
	F44127	27'	\$16170
	F44130	30'	\$17925
2 SIDES	F44023	23'	\$12240
	F44026	26'	\$13660
	F44029	29'	\$14205

FORM WITHOUT CATCHERS

LEDGE	F42023	23'	\$5360
	F42026	26'	\$5905
	F42029	29'	\$6125



ALL FORMS ARE 9' 8" WIDE

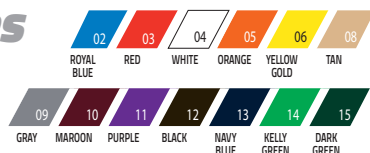
FAST INSTALLATION

READY-FIT ALUMINUM SAND PIT COVERS

F44023C	23' Cover	\$7540	F44026C	26' Cover	\$8530	F44029C	29' Cover	\$9510
F44124C	24' Cover	\$7880	F44127C	27' Cover	\$8870	F44130C	30' Cover	\$9850
F44225C	25' Cover	\$8190	F44228C	28' Cover	\$9170	F44231C	31' Cover	\$10260



COLORS



BALLASTED LJ/TJ SAND PIT COVERS

- Exclusive Vipol Matrix mesh material or solid vinyl polyester
- Anchoring system: Vinyl wrapped galvanized steel chain perimeter
- Ballasted pit covers are custom sized and sold by the square foot (no returns)
- Dimension certification form must be submitted with order

493680	Mesh Vinyl	\$5/sq ft
493682	Solid Vinyl	\$4.25/sq ft



ADDITIONAL COVER COLORS AVAILABLE!

Additional charge applies. See page 3 for color options. (Gray is standard.)

LJ/TJ SAND PIT COVERS

- Keep your sand pit clean and dry with solid vinyl sand pit covers or choose mesh if rain is not an issue
- Constructed of vinyl coated woven polyester
- Anchoring system: Bags filled with sand placed in pouches to weigh cover down
- Optional 5' x 5' multi-color graphic available
- Graphic worksheet and vector artwork must be provided

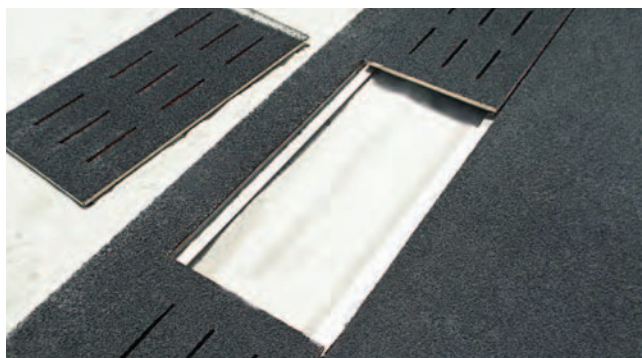
730147	Mesh 11' 9" x 25' 6"	\$1060
730147L	Mesh 11' 9" x 31' 6"	\$1290
730147V	Vinyl 11' 9" x 25' 6"	\$1115
730147VL	Vinyl 11' 9" x 31' 6"	\$1445
9453	Graphic Option	\$727



TRADITIONAL GRATE & MAT SAND CATCHER COVER SYSTEM

- Combination of 1" x 1/8" galvanized steel bar grating and perforated rubber overlay
- Creates strong combination for stamping off sand yet light enough for easy handling
- Standard unit measures 18" x 36" x 1 5/8" and requires a ledge around perimeter to rest on
- For perfect fit, installer may make one or more field cuts
- Sold per 18" x 36" sections only

730149 \$177/section



RECESSED SAND CATCHER COVER SYSTEM

- Recessed cover design for 1/2" (12mm) track surface
- Constructed of 1/8" aluminum sheet metal
- Standard unit measures 18" x 36" and requires a ledge around perimeter to rest on
- Special lengths available between 18" and 35" long

73015036 \$164/section



LJ/TJ ALUMINUM SAND PIT COVER

- Each panel made from 9.5" x 1.75" x .125" aluminum planking framed with 2 3/8" x 1 1/2" x 3/16" aluminum angle
- Panels have four flush mount handles
- Recessed design for 1/2" (12mm) track surface

730148 \$37/sq ft



PERIMETER PADDING SYSTEM

- Greatly reduce possibility of injury caused by impact with sand pit edging
- Modular pads install on any sand pit quickly and conveniently
- Critical location of pads is along sides of sand pit
- Each pad is 36" long

730 \$89

STEEPLECHASE



SAVE MONEY WITH VALUEPACKS!

VALUEPACK - SURFACE MOUNT

Package includes:

- F500 Steeplechase Water Jump Form
- 740144 Steeplechase Water Jump Barrier-surface mount version

VPF500 **\$8540**

FUNCTIONAL-FORM STEEPLECHASE WATER JUMP SYSTEMS

Gill Athletics has greatly simplified the installation of steeplechase water jump reservoirs with these Functional-Form systems. With the Functional-Form, installation precision is ensured to meet NFHS, NCAA and IAAF specifications. Structure is fabricated of specially folded $\frac{1}{8}$ " aluminum to maximize strength and includes designed inner wall supports that allow the concrete to flow through and set evenly.

- F500: Compatible with 740144 water jump barrier
- F510: Compatible with 740134 water jump barrier
- Both models compatible with 730146 aluminum water jump cover
- Both models come standard with valve option: installed front wall valve to be connected with an outgoing pipe to the drain source
- *Meets NFHS, NCAA and IAAF specifications*

F500	<i>Surface Mount Form</i>	\$5790
F510	<i>Ground Sleeve Form</i>	\$5790

VALUEPACK - GROUND SLEEVE

Package includes:

- F510 Steeplechase Water Jump Form with integrated ground sleeves
- 740134 Steeplechase Water Jump Barrier-ground sleeve version

VPF510 **\$8165**



WATER JUMP COVERS

- Each panel made from 9.5" x 1.75" x .125" aluminum planking framed with heavy duty aluminum angle
- Panels have four flush mount handles
- Recessed design for $\frac{1}{2}$ " (12mm) track surface
- Understructure supported with 4" x 2" aluminum beams


730146 **\$8170**



740134 Shown with 740145212

STEEPLECHASE WATER JUMP BARRIERS

- Barrier beam is 4" x 4" square steel tubing with synthetic track material
- Pull pin design makes barrier height change a snap
- Welded gusset adds needed strength support to the beam
- Adjustable to three heights: 30", 33", 36"
- Aluminum water jump barrier seal available
- *Meets NFHS, NCAA and IAAF specifications*
- *Surface mount barrier is IAAF certified*
- *5 Year Limited Warranty*

740134	<i>Water Jump Barrier w/ Ground Sleeves</i>	\$2345
740144	<i>Water Jump Barrier w/ Surface Mount</i> 	\$2730
730145B	<i>Aluminum Water Jump Barrier Seal</i>	\$651

MESH WATER JUMP BARRIER SEALS

- Add color and design to your steeplechase water jump
- Lightweight design will ease water barrier height change
- *5 Year Limited Warranty*

740145202	<i>Royal Blue</i>	\$321
740145203	<i>Red</i>	\$321
740145204	<i>White</i>	\$321
740145209	<i>Gray</i>	\$321
740145212	<i>Black</i>	\$321
740145204SP	<i>White Mesh with Graphics</i>	\$535

COLORS



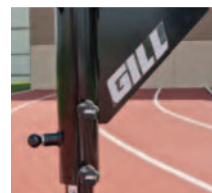


OFFICIAL EQUIPMENT SUPPLIER TO THE
2019 TRACK & FIELD CHAMPIONSHIPS

STEEPLECHASE BARRIER WITH DROP DOWN WHEELS

- 5" x 5" Barrier beam is constructed with aluminum extrusion and synthetic track material
- Wheels easily set and retract with foot engaged levers
- Pin pull design allows for simple barrier height adjustment
- Welded gusset adds needed strength support to the beam
- Adjustable to three heights: 30", 33", 36"
- Meets NFHS, NCAA and IAAF specifications, IAAF certified
- 5 Year Limited Warranty

740150	1 x 5m Barriers, 3 x 4m (4)	IAAF	\$11955/set
740150131	4m Barrier; 13' Width	IAAF	\$3175/ea
740150161	5m Barrier; 16' 5" Width	IAAF	\$3460/ea



STEEPLECHASE BARRIER

- 5" x 5" Barrier beam is constructed with aluminum extrusion and synthetic track material
- Pin pull design allows for simple barrier height adjustment
- Welded gusset adds needed strength support to the beam
- Adjustable to three heights: 30", 33", 36"
- Optional wheel kit for manual addition of wheels for transportation
- Meets NFHS, NCAA and IAAF specifications, IAAF certified
- 5 Year Limited Warranty

740140	1 x 5m Barriers, 3 x 4m (4)	IAAF	\$8965/set
740140131	4m Barrier; 13' Width	IAAF	\$2240/ea
740140161	5m Barrier; 16' 5" Width	IAAF	\$2530/ea
74014050	Wheels (4)		\$224/set

6' TRAINING BARRIER

740140061	6' Training Steeplechase Barrier		\$1790
740150061	6' Training Barrier w/Drop Down Wheels		\$2975



On all Steeplechase Barriers
Call for Details.



VAULT BOXES

ALUMINUM VAULT BOX

- Welded aluminum construction
- Reinforced backstop for prolonged life
- Once installed you will never have to remove it
- *Meets NFHS, NCAA and IAAF specifications, IAAF certified*

502  \$514

ALUMINUM VAULT BOX LID

- Compatible with all Gill vault boxes
- Reinforced with two 1/2" angled vertical supports to prevent sagging
- 50201: Recessed design for 1/2" (12mm) track surface
- 50202: Flush design with no added track surface

50201	Lid-Recessed Mount	\$451
50202	Lid-Flush Mount	\$483



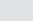
STEEL VAULT BOX

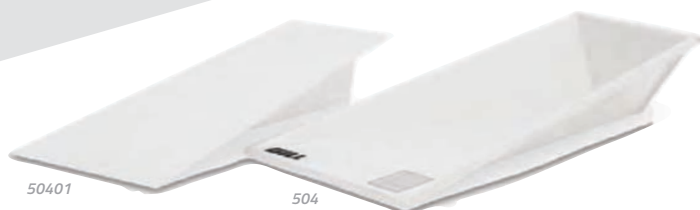
- Twelve gauge steel with fold and weld construction
- Flanged edges and flared sides for secure installation
- Finished with durable white powder coat
- *Meets NFHS, NCAA and IAAF specifications, IAAF certified*

500  \$378

UNIVERSAL VAULT BOX LID

- Compatible with all Gill vault boxes
- Constructed of 11 gauge hot rolled steel
- Features anti-slip designed surface
- Finished with durable white powder coat

503  \$325



STAINLESS STEEL VAULT BOX AND LID

- Box: Stainless steel alloy fold and weld construction for corrosion resistance
- Lid: 12 gauge 304 stainless steel plate with 2 angled vertical supports to prevent sag
- Lid: Recessed design for 1/2" (12mm) track surface
- Lid intended for use with stainless steel vault box for best corrosion resistance
- *Meets NFHS and NCAA specifications*

504	Vault Box	\$798
50401	Vault Box Lid	\$577

CAST ALUMINUM VAULT BOX

- 100% cast aluminum construction with a wall thickness of 3/8"
- Standard durable white powder coat finish; Orange powder coat option available
- Inside corners rounded for unhindered pole rotation
- Guaranteed against cracking or warping
- *Meets NFHS, NCAA and IAAF specifications, IAAF certified*

505	White 	\$840
505C05	Orange 	\$913



SHOT STOPS

NEW



SOFT SHOT STOP

- Prevents implements from rolling past the throw sector
- Shock absorbing foam filled barriers are wrapped in a 19oz customizable vinyl
- Non-slip material on bottom creates traction to keep barriers in place
- Hook and loop straps secures each barrier to each other and keeps barriers functioning as one unit
- Each barrier is 6' L x 23" W x 23" H

869CXX Soft Shot Stop \$600

869CXXSP Soft Shot Stop W/ Graphics \$675

CUSTOMIZABLE

Vinyl



*Specify vinyl color with order, use the two-digit number of your color selection to replace XX in the item number.



HEAVY DUTY IMPLEMENT BARRIER

- Prevents implements from rolling past the throw sector
- Constructed with durable polyethylene
- Each barrier locks together with steel pin to eliminate gaps
- Each section is 6' L x 18" W x 32" H. 80 lbs empty / 1,110 lbs if filled with water

868 \$635

SECTOR LENGTH	# OF UNITS
16m / 52'	6
18m / 59'	7
20m / 66'	8
22m / 72'	8
24m / 79'	9

*Applies to both 868 and 869 Models

FACILITIES

CIRCLES & TOEBOARDS



ALUMINUM CIRCLES

- Four sections of 1" x 3/4" extruded aluminum angle
- Designed to be cast into concrete
- Discus circle can also be mounted to surface
- Compatible with toeboards 358, 363
- *Meets NFHS, NCAA and IAAF specifications*

369	Shot/Hammer Circle	\$224
370	Discus Circle	\$235



ALUMINUM CIRCLES WITH 2" ANGLE PROFILE

- Two sections of 2" x 2" extruded aluminum angle
- Designed to be cast into concrete
- Compatible with toeboards 358, 363
- *Meets NFHS, NCAA and IAAF specifications*

374	Shot/Hammer Circle	\$494
375	Discus Circle	\$514



PROFILE FOR
369, 370 & 372



PROFILE FOR
371 & 373



PROFILE FOR
374 & 375



364 with 373



ALUMINUM SHOT CIRCLE

- Three sections of 1" x 3/4" extruded aluminum angle
- Designed to be mounted on top of concrete surface
- Anchor bolts included
- Compatible with toeboards 359, 364
- *Meets NFHS specifications*

372 \$214



POWDER COATED STEEL DISCUS CIRCLE

- Three sections of 1/4" x 1 1/2" flat powder coated steel
- Designed to be mounted on top of concrete surface
- Anchor bolts included
- *Meets NFHS specifications*

371 \$278



POWDER COATED STEEL SHOT CIRCLE

- Four sections of 1/4" x 1 1/2" flat powder coated steel
- Designed to be mounted on top of concrete surface
- Anchor bolts included
- Compatible with toeboards 359, 364
- *Meets NFHS specifications*

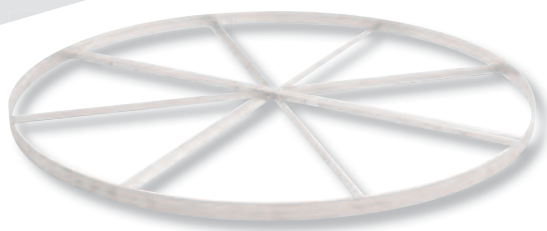
373 \$247



HAMMER CONVERSION CIRCLE

- Converts a discus ring into a hammer ring
- Four piece: blue PVC material
- Six piece: white recycled plastic with interlocking sections
- *Meets NFHS, NCAA and IAAF specifications, IAAF certified*

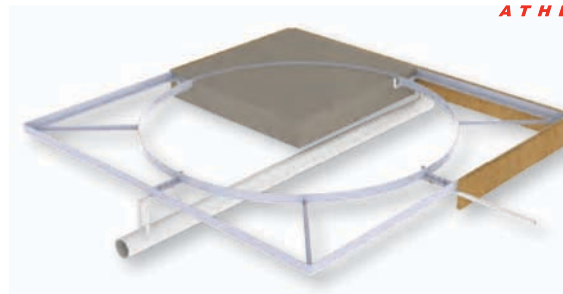
362	4 Piece System	IAAF	\$996
3621	6 Piece System	IAAF	\$856



ALUMINUM CIRCLES WITH CROSS BRACING

- Two sections of 1/4" x 3" extruded aluminum with welded bracing
- Bolt together to maintain form during in-ground installation
- Hardware included
- Compatible with toeboards 358, 363
- Meets NFHS, NCAA and IAAF specifications, IAAF certified

366	Shot/Hammer Circle	IAAF	\$674
366C04	Shot/Hammer Circle; white	IAAF	\$728
367	Discus Circle	IAAF	\$672
367C04	Discus Circle; white	IAAF	\$724



ALUMINUM CIRCLE FORMS

- Four sections of 2" x 3" aluminum angle
- Bolt together form for in-ground installation
- Aluminum exterior bracing creates a strong frame
- Center open for smooth concrete pour and crack-resistant finish
- Inner circle is 1/4" x 3" flat aluminum bar
- Compatible with toeboards 358, 363
- Meets NFHS, NCAA and IAAF specifications

3741	Shot/Hammer Circle Form	\$2505
3751	Discus Circle Form	\$2865



SYNTHETIC SHOT TOEBOARD FOR DEPRESSED PAD

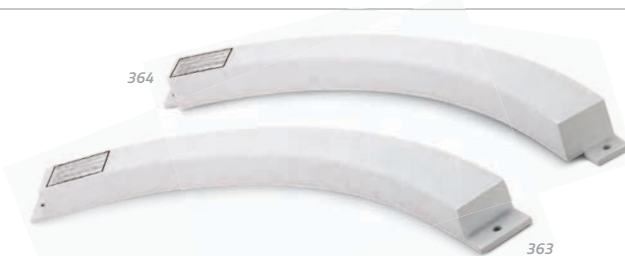
- Molded low density polyethylene designed for 3/4" depressed surface
- Compatible with circles 366, 369, 374, 3741
- Meets NFHS, NCAA and IAAF specifications

358 \$336

SYNTHETIC SHOT TOEBOARD FOR LEVEL PAD

- Molded low density polyethylene designed for surface mount shot circles
- Compatible with circles 372, 373
- Meets NFHS specifications

359 \$336



ALUMINUM SHOT TOEBOARD FOR DEPRESSED PAD

- Cast aluminum designed for a 3/4" depressed surface
- Compatible with circles 366, 369, 374, 3741
- Meets NFHS, NCAA and IAAF specifications, IAAF certified

363 \$525

ALUMINUM SHOT TOEBOARD FOR LEVEL PAD

- Cast aluminum designed for surface mount shot circles
- Compatible with circles 372, 373
- Meets NFHS specifications

364 \$525



SYNTHETIC PLUGS

- Keeps debris and standing water out of throwing circles
- Constructed of 3/4" thick rubber and made to fit snug inside depressed circles
- Plugs come in sections for easier handling

37001	Shot Circle Plug	\$436
37002	Discus Circle Plug	\$738



Toeboard sold separately

INDOOR SHOT/WEIGHT THROW CIRCLE

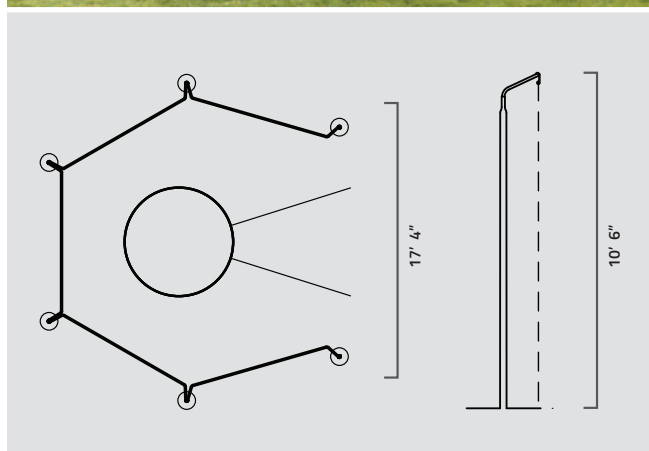
- Constructed of 3/4" plywood with steel hinges and handles
- Foldaway handles for easy handling and storage
- Laminated weather proofed marine plywood toeboard (sold separately)
- Optional three piece 3/4" 7-ply birch plywood throwing surface (sold separately, not shown)
- Meets NFHS, NCAA and IAAF specifications

368	Indoor Shot/Weight Throw Circle	\$1040
3680	Wood Shot Toeboard for Indoor Circle	\$492
3681	Shot Throwing Surface	\$396

DISCUS CAGES



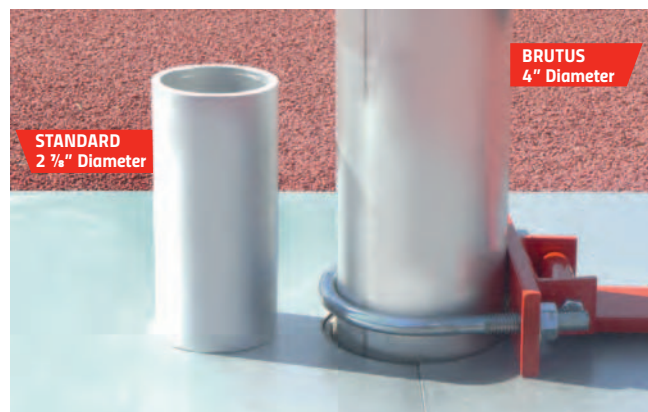
80401



PRO-DOWN DISCUS CAGE

- Poles: (6) 2 3/8" outside diameter 12 gauge steel poles
- Net: Knotless weather treated nylon net with 180 lb break strength
- Net height: 10' 6"
- Five galvanized steel top rungs eliminate net sag
- **Meets NFHS specifications**
- **5 Year Warranty**

80401	Cage with Ground Sleeves	\$1825
80402	Cage with Plates	\$2895
80405	Replacement Net	\$1150



STANDARD
2 3/8" Diameter

BRUTUS
4" Diameter



732150

BRUTUS DISCUS CAGE

- For high wind areas that need extra strength discus cages
- Made of Hammer Cage strength 4" outside diameter .218" thick wall aluminum poles
- Products with CXX include Powder Coat option, use the two-digit number from the color chart on page 87 to replace the XX in the product number
- **Meets NFHS and NCAA specifications**
- **5 Year Warranty**

9010	6 Pole High School Cage	\$4750
9010CXX	6 Pole High School Cage with Custom Color	\$5655
9020	7 Pole High School Cage	\$5520
9020CXX	7 Pole High School Cage with Custom Color	\$6290
9021	7 Pole High School Cage w/ Rear Door Access	\$5850
9021CXX	7 Pole High School Cage w/ Rear Door Access with Custom Color	\$6625
732150	8 Pole NCAA Cage w/ Rear Door Access	\$8785
732150CXX	8 Pole NCAA Cage w/ Rear Door Access with Custom Color	\$9645



DISCUS SECTOR NET

- Effective at stopping shot or discus from rolling or skipping outside of the sector
- 2' tall by 60' long 320 lb break strength discus net
- Held by 3/4" diameter steel net poles and ground stakes
- Polyethylene net spools included for convenient storage and handling

731135 \$385



REPLACEMENT WARNING SIGN

M2322 \$12

STANDARD OPTION



COLOR OPTION



COLOR OPTIONS AVAILABLE!

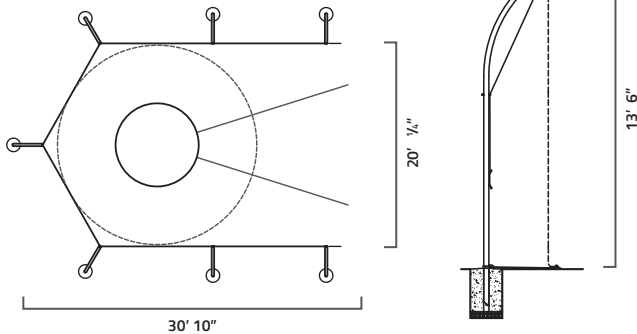
Transform Your Cages with Custom Powder Coat Options.

CUSTOMIZABLE



*To specify color with order, use the two-digit number of your color selection to replace XX in the item number.
*Gray and Black powder coat available in Gloss or Flat

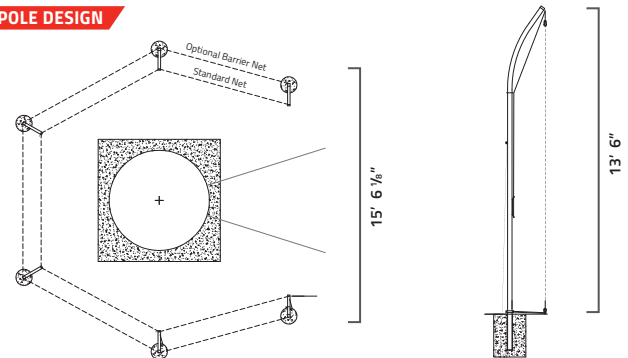
7 POLE DESIGN



HIGH SCHOOL ALUMINUM DISCUS CAGE

8010	6-Pole Cage	\$3200
8010CXX	6-Pole Cage with Custom Color	\$3970
M2055	Replacement Main Net	\$781
80102	Barrier Net	\$417
8020	7-Pole Cage	\$3565
8020CXX	7-Pole Cage with Custom Color	\$4415
80201A	Replacement Main Net	\$674
80202A	Barrier Net	\$556
8021	7-Pole Cage w/ Rear Door Access	\$4635
8021CXX	7-Pole Cage w/ Rear Door Access with Custom Color	\$5405
80211	Replacement Main Net	\$878
80212	Barrier Net w/ Rear Door Access	\$535

6 POLE DESIGN



HIGH SCHOOL STEEL DISCUS CAGE

8030	6-Pole Cage	\$2895
M2055	Replacement Main Net	\$781
80302	Barrier Net	\$449

SPECIFICATIONS

- Aluminum poles: 2 7/8" outside diameter 6063-T6 (Ultimate-30ksi, Yield-25ksi) with rolled offset for safety
- Steel poles: 2 1/2" square A513 (Ultimate-42ksi, Yield-30ksi) with rolled offset for safety
- Nets: 180 lb break strength
- Net height: 13' 6"
- Meets NFHS specifications
- 5 Year Warranty

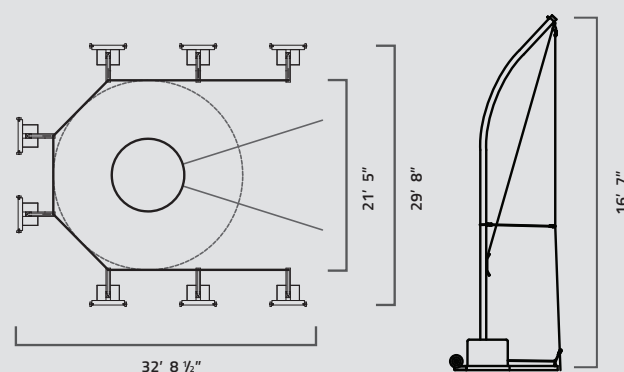
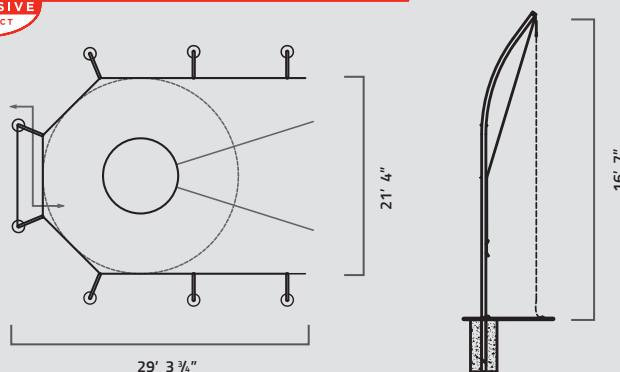


On all Gill Cages
Call for Details.

DISCUS & SHOT CAGES



REAR DOOR ACCESS SYSTEM



NCAA ALUMINUM DISCUS CAGE

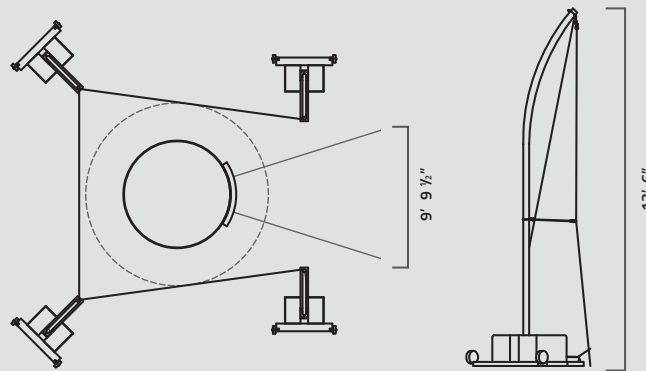
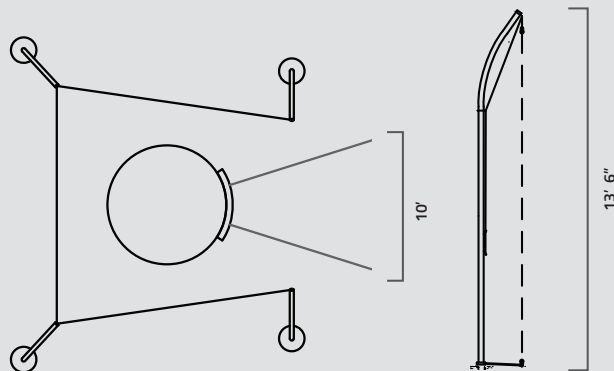
- Poles: (8) 6063-T6 aluminum net poles
- Net: Weather treated nylon 6 net with 340 lb break strength
- Rear door access net standard
- Net height: 16' 7"
- Rear net support tubes prevent net sag
- 18" hinged net arms secure net at all eight poles
- 36" deep ground sleeves
- **Meets NCAA specifications**
- **5 Year Warranty**

732130	Cage	\$5625
732130CXX	Cage with Custom Color	\$6625
732133	Replacement Main Net	\$1600
732132	Optional Barrier Net (8')	\$1235

NCAA PORTABLE DISCUS CAGE

- Designed for set up and removal as needed
- Poles: (8) 2 1/2" outside diameter schedule 40 aluminum net poles
- Net: Weather treated nylon 6 net with 340 lb break strength
- Net height: 16' 7"
- Bases: A500 Grade B steel with wheels for transportability and weighted with 5 gallon jugs to be filled with sand or water
- **Meets NCAA specifications**
- **5 Year Warranty**

732230	Cage	\$11460
732230CXXYY	Cage with Custom Color	\$12605
732131A	Replacement Main Net	\$1200



SHOT CAGE

- Poles: (4) 6063-T6 aluminum or A513 steel
- Net: Weather treated nylon 6 net with 180 lb break strength
- Net height: 13' 6"
- 18" hinged net arms secure net at front two poles with ground stakes used at back poles
- 20" deep ground sleeves
- 5 Year Warranty

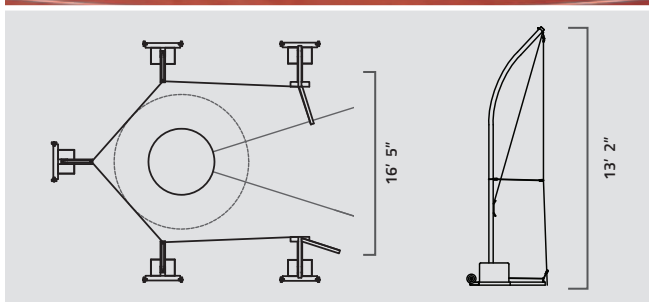
805	Steel Cage	\$2305
8050	Aluminum Cage	\$2790
8050CXX	Aluminum Cage with Custom Color	\$3145
M2054	Replacement Main Net	\$771

PORTABLE SHOT CAGE

- Designed for set up and removal as needed
- Poles: (4) 6063-T6 aluminum net poles
- Net: #42A knotless nylon netting with 180 lb break strength
- Net height: 13' 6"
- Bases: A500 Grade B steel with wheels for transportability and weighted with 5 gallon jugs to be filled with sand or water
- 5 Year Warranty

732260	Cage	\$6290
732260CXXYY	Cage with Custom Color	\$6955
M2054	Replacement Main Net	\$771

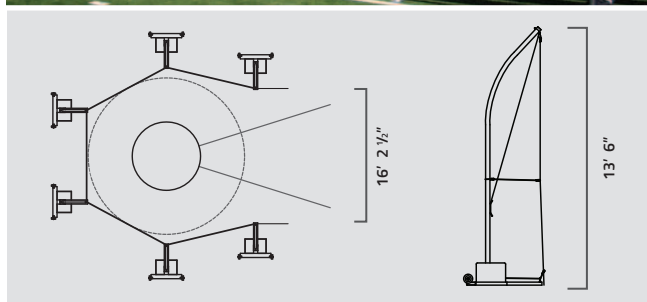
DISCUS & PORTABLE CAGES



NCAA PORTABLE INDOOR CAGE

- Designed for set up and removal as needed
- Poles: (5) 6063-T6 aluminum net poles
- Net: #42A knotless nylon netting with 561 lb break strength
- Net height: 13' 2"
- Doors: repositionable with wired front design for longer life
- Bases: A500 Grade B steel with wheels for transportability and weighted with 5 gallon jugs to be filled with sand or water
- Jug cover customization available
- Meets NCAA specifications
- 5 Year Warranty

732250	Cage	\$12360
732250CXXYY	Cage with Custom Color	\$13680
732251	Replacement Main Net	\$1900
731152	Replacement Door Net	\$267



HIGH SCHOOL PORTABLE DISCUS CAGE

- Designed for set up and removal as needed
- Poles: (6) 6063-T6 aluminum net poles
- Net: #504 knotless nylon netting with 180 lb break strength
- Net height: 13' 6"
- Bases: A500 Grade B steel with wheels for transportability and weighted with 5 gallon jugs to be filled with sand or water
- Jug cover customization available
- 5 Year Warranty

732220	Cage	\$8060
732220CXXYY	Cage with Custom Color	\$9050
M2055	Replacement Main Net	\$781

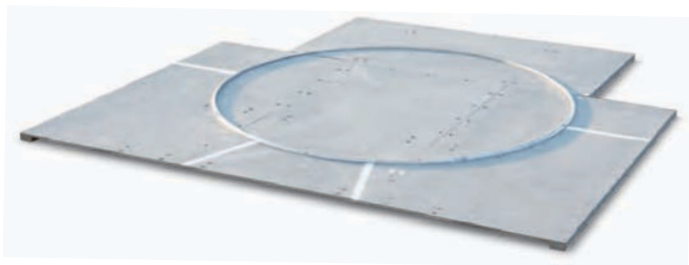


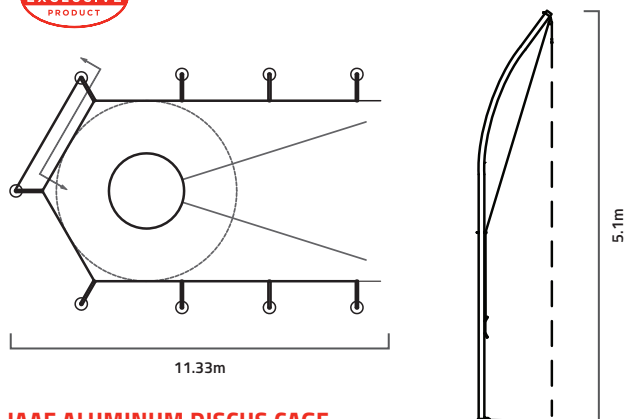
On all Gill Cages
Call for Details.

PORTABLE DISCUS PLATFORM

- Wood platform with aluminum circle
- Constructed of 1/2" marine grade plywood with pressure treated 2' x 5' and 2' x 6' lumber
- Platform breaks down into eight pieces for storage space of 8' x 4'
- Weighs in excess of 400 lb
- Gray marine coat finish

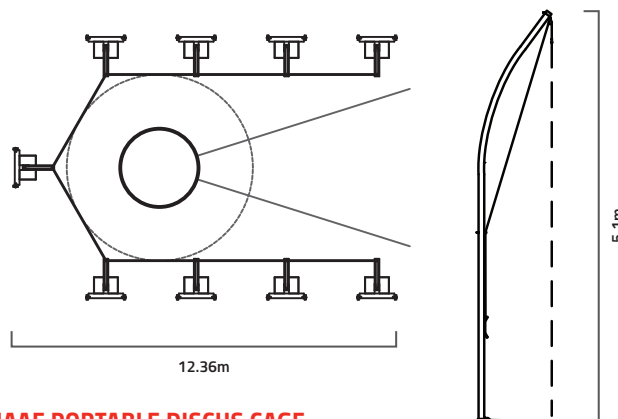
3710 **\$5250**



GILL EXCLUSIVE PRODUCT
REAR DOOR ACCESS SYSTEM

IAAF ALUMINUM DISCUS CAGE

- Poles: (9) 6063-T6 aluminum net poles
- Net: Weather treated nylon 6 net with 340 lb break strength
- Rear door access net standard
- Net height: 5.1m
- Rear net support tubes prevent net sag
- 18" hinged net arms secure net at all nine poles
- 36" deep ground sleeves
- **IAAF certified**
- **5 Year Warranty**

732140	Cage		\$6460
732140CXX	Cage with Custom Color		\$7500
732143	Replacement Main Net		\$1920
732142	Optional Barrier Net (8')		\$814


IAAF PORTABLE DISCUS CAGE

- Designed for set up and removal as needed
- Poles: (9) 6063-T6 aluminum net poles
- Net: Weather treated #42A knotless net with 340 lb break strength
- Net height: 5.1m
- Bases: A500 Grade B steel with wheels for transportability and weighted with 5 gallon jugs to be filled with sand or water
- **IAAF certified**
- **5 Year Warranty**

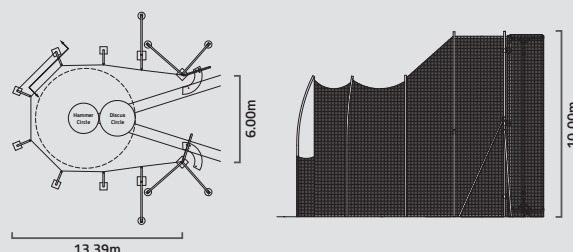
732240	Cage		\$14345
732240CXXYY	Cage with Custom Color		\$15450
732141A	Replacement Main Net		\$1440

GILL EXCLUSIVE PRODUCT
REAR DOOR ACCESS SYSTEM

IAAF TALL DISCUS/HAMMER CAGE

- Poles: (8) 6063-T6 aluminum net poles
- Doors: (2) Galvanized steel door hinge poles and 10m tall aluminum moveable doors
- Net: Weather treated nylon 6 net with 340.7kg break strength
- Rear door access net standard
- Main net: 23' 3.5"/7.1m, Door net: 32' 10"/10m
- Required Cage Pole Braces included
- 48" deep ground sleeves
- Ground sleeve kit sold separately for quick shipability
- **Meets NCAA and IAAF specifications. IAAF certified**
- **5 Year Warranty**

732215	Cage		\$36425
73221501	Ground Sleeve Kit		\$2445
732216	Replacement Main Net		\$10070
732217	Replacement Door Net		\$2230
732218	Optional Barrier Net (8')		\$1800



HAMMER CAGES

WHY BUY GILL HAMMER CAGES? SAFETY, CONVENIENCE, & LONGEVITY!

Gill hammer cages have three exclusive features that increase safety and decrease liability. These features combined with an industry best five year cage warranty from Gill Athletics keeps your facility at the top of the class. Doesn't your facility deserve the best?

WIRED FRONT DOOR DESIGN

With a wired front door design your cage will look new for years to come. No more bent front pole from errant throws, and decrease the likelihood of bounce backs from implements.

DOOR HINGE LOCK BOLT

Suggested from the top track designer in America, this unique feature keeps your front doors from tweaking and misaligning from the door hatch location.

REAR DOOR ACCESS

Keep your athletes away from the danger zone of the front cage while increasing the speed of repetitions.



On all Gill Cages
Call for Details.

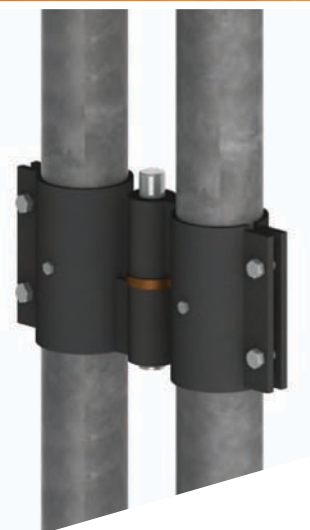
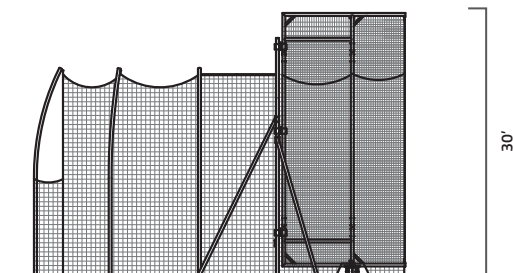


Color Options Available
See Chart on Page 93.

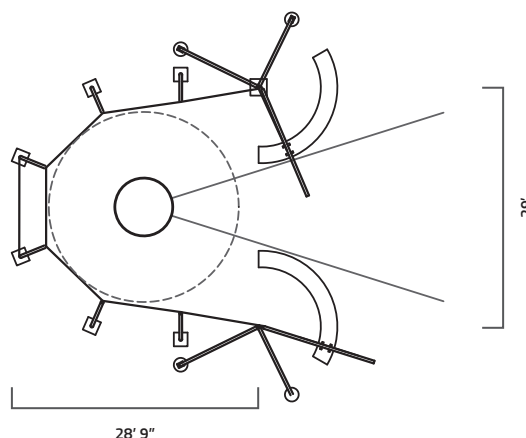
MAXIMUS™ HAMMER CAGE

▪ 5 Year Warranty

732210	Cage	\$35415
732210CXXYY	Cage with Custom Color	\$37515
73221001	Ground Sleeve Kit	\$1845
732103	Optional Barrier Net (8')	\$856



REAR DOOR ACCESS SYSTEM





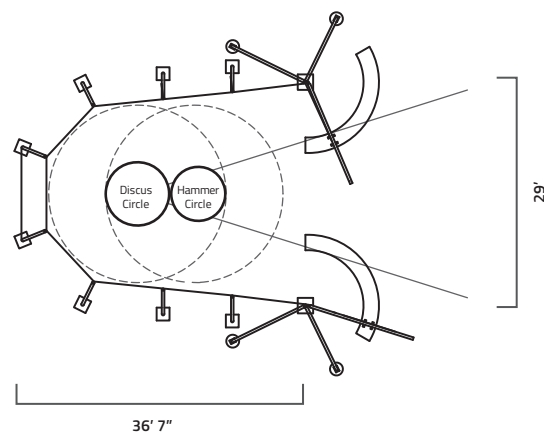
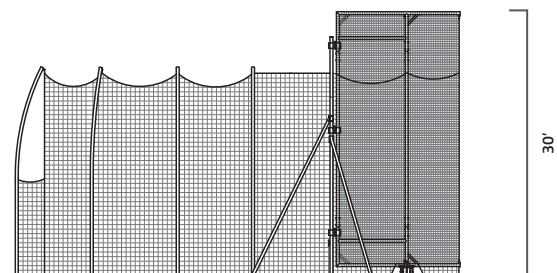
MAXIMUS™ DOUBLE RING HAMMER CAGE

▪ 5 Year Warranty

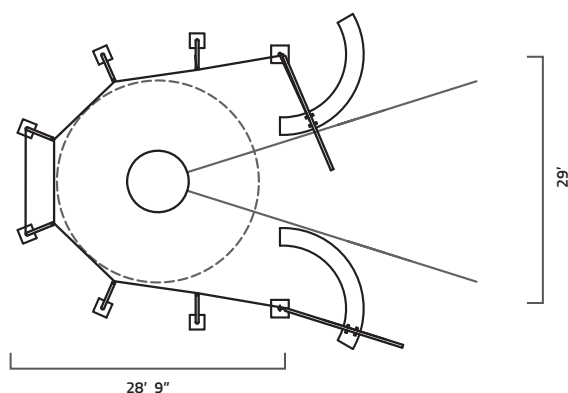
732211	Cage	\$37495
732211CXXYY	Cage with Custom Color	\$42850
73221101	Ground Sleeve Kit	\$2275
732108	Optional Barrier Net (8')	\$942



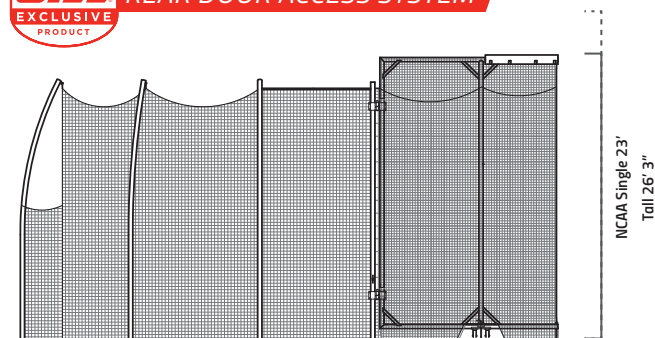
REAR DOOR ACCESS SYSTEM



HAMMER & DISCUS CAGES



GILL EXCLUSIVE REAR DOOR ACCESS SYSTEM



NCAA HAMMER/DISCUS CAGE

- Single Ring Design for Discus Circle and Hammer Conversion Circle
- Poles: (6) 6063-T6 aluminum net poles
- Doors: (2) Galvanized steel door hinge poles and 7m tall aluminum moveable doors
- Net: Weather treated nylon 6 net with 749 lb break strength
- Rear door access net standard
- Main net: 20' 6"/6.25m, Door net: 23'/7m
- 40" deep ground sleeves
- Ground sleeve kit sold separately for quick shipability
- **Meets NCAA specifications**
- **5 Year Warranty**

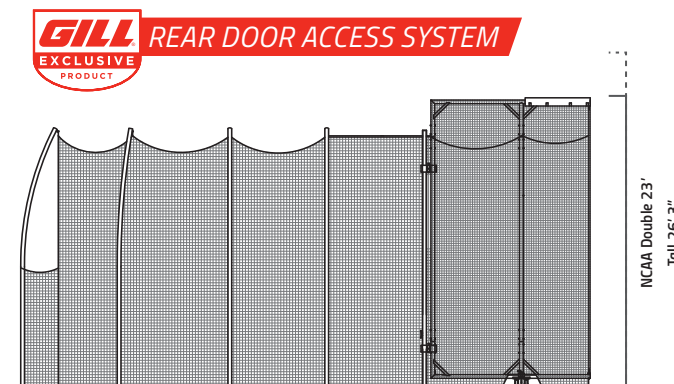
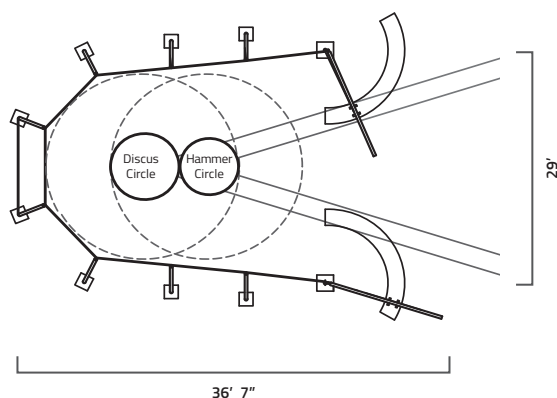
732100	Cage	\$27855
732100CXXYY	Cage with Custom Color	\$32140
73210001	Ground Sleeve Kit	\$1855
732101	Replacement Main Net	\$7835
732102	Replacement Door Net	\$2435
732103	Optional Barrier Net (8')	\$856
732104	Hammer Cage Door Bracing	\$2145

NCAA TALL HAMMER/DISCUS CAGE

- Single Ring Design for Discus Circle and Hammer Conversion Circle
- Poles: (6) 6063-T6 aluminum net poles
- Doors: (2) Galvanized steel door hinge poles and 7m tall aluminum moveable doors
- Net: Weather treated nylon 6 net with 749 lb break strength
- Rear door access net standard
- Required cage door bracing included
- Main net: 23'/7m, Door net: 26' 3"/8m
- 48" deep ground sleeves
- Ground sleeve kit sold separately for quick shipability
- **Meets NCAA specifications**
- **5 Year Warranty**

732200	Tall Cage	\$31065
732200CXXYY	Tall Cage with Custom Color	\$32140
73220001	Ground Sleeve Kit	\$1900
732201	Replacement Main Net	\$8100
732202	Replacement Door Net	\$2680
732103	Optional Barrier Net (8')	\$856





NCAA DOUBLE RING HAMMER/DISCUS CAGE

- Double Ring Design for Discus and Hammer Circle
- Poles: (8) 6063-T6 aluminum net poles
- Doors: (2) Galvanized steel door hinge poles and 7m tall aluminum moveable doors
- Net: Weather treated nylon 6 net with 749 lb break strength
- Rear door access net standard
- Main net: 20' 6"/6.25m, Door net: 23'/7m
- 40" deep ground sleeves
- Ground sleeve kit sold separately for quick shipability
- **Meets NCAA specifications**
- **5 Year Warranty**

732105	Cage	\$30105
732105CXXYY	Cage with Custom Color	\$32140
73210501	Ground Sleeve Kit	\$2285
732106	Replacement Main Net	\$9365
732102	Replacement Door Net	\$2435
732108	Optional Barrier Net (8')	\$942
732104	Hammer Cage Door Bracing	\$2145

NCAA TALL DOUBLE RING HAMMER/DISCUS CAGE

- Double Ring Design for Discus and Hammer Circle
- Poles: (8) 6063-T6 aluminum net poles
- Doors: (2) Galvanized steel door hinge poles and 7m tall aluminum moveable doors
- Net: Weather treated nylon 6 net with 749 lb break strength
- Rear door access net standard
- Required cage door bracing included
- Main net: 23'/7m, Door net: 26' 3"/8m
- 48" deep ground sleeves
- Ground sleeve kit sold separately for quick shipability
- **Meets NCAA specifications**
- **5 Year Warranty**

732205	Tall Cage	\$33105
732205CXXYY	Tall Cage with Custom Color	\$34205
73220501	Ground Sleeve Kit	\$2380
732206	Replacement Main Net	\$8015
732202	Replacement Door Net	\$2680
732108	Optional Barrier Net (8')	\$942



OUTDOOR THROWING NET

- Get the maximum number of reps with the minimal amount of retrieval
- Provides the perfect set up for working on throwing technique for shot put, discus and javelin (weighted balls)
- Bottom of main net has a pocket to catch implements before they hit the ground, preventing damage and making retrieval easier
- Side nets offer additional errant throw protection
- Poles: 4" diameter, 1/8" wall, T6 aluminum tube in 40" deep ground sleeves
- Nets are 749 lb test weather treated knotted nylon
- Main net is 20' x 20'

731300 \$2790

HAMMER CAGE PADDING

- For use at front half of top horizontal member of cage door
- Provides damage protection and minimizes hammer rebound
- Vinyl encased high density foam with hook and loop attachment
- Use the two-digit number of your vinyl color selection (Page 8) to replace the XX in the item number
- **All Gill hammer cages include two pads**

731109CXX Hammer Cage Padding \$374/ea

LOOKING FOR A HAMMER CONVERSION CIRCLE?

See Page 84.

HAMMER & DISCUS CAGES

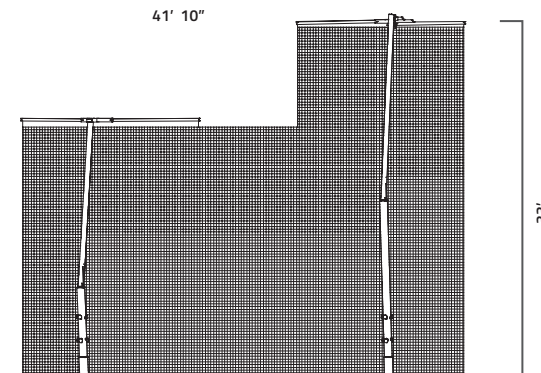
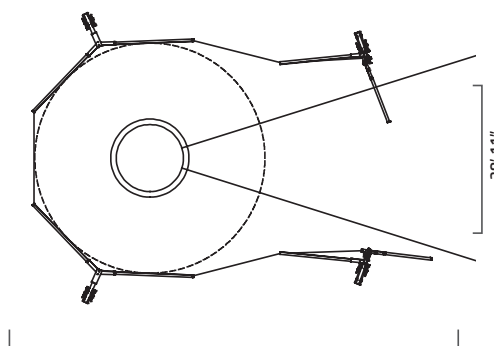


THOR 10 HAMMER/DISCUS CAGE

- Poles: (4) Combination of steel and aluminum to withstand up to 74mph winds
- Doors: (2) 9m x 3m swing arm doors
- Net: 1 3/4" square mesh woven poly cord with 771 lb break strength
- Main net height: 23'7m, Door net height: 32'10"9m
- Net is secured by net rails across entire cage and 14 rope anchors
- 59" deep ground sleeves
- *Meets NCAA and IAAF specifications.*
- *5 Year Warranty*

732310CXX Thor 10 Hammer/Discus Cage

\$39725



On all Gill Cages
Call for Details.



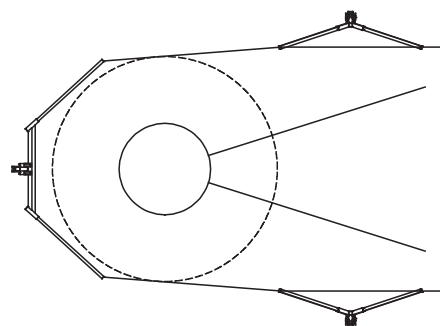
APOLLO DISCUS CAGE

- Poles: (3) Combination of steel and aluminum to withstand up to 62mph winds
- Net: 1 $\frac{3}{4}$ " square mesh woven poly cord with 352 lb break strength
- Net height: 18'
- Net is secured by 14 hanging points and 8 rope anchors
- 36" deep ground sleeves
- Meets NCAA and IAAF Specifications.
- 5 Year Warranty

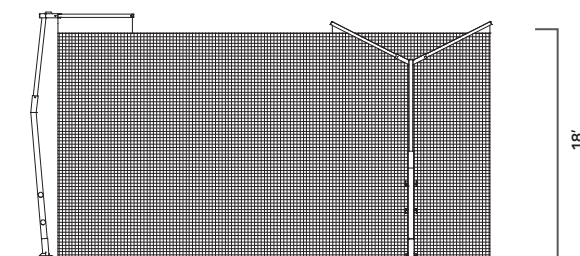
732301CXX

Apollo Discus Cage

\$11035



On all Gill Cages
Call for Details.





VERSACOM BOXES

CONNECTING IT ALL TOGETHER

The VersaCom Box provides a junction for electricity and cable hookups. This box can be put in virtually any location around performance areas of varying surfaces. The open bottom of the VersaCom Box provides adequate drainage and conduit entry, while the hand holes in the cover allow easy access.

- Divider plates in full size version, provided to help keep electrical equipment segregated
- Main box structure is made of $\frac{1}{4}$ " thick folded aluminum
- Lid is constructed of $\frac{1}{4}$ " aluminum plates for maximum support and durability

The VersaCom Box - Synthetic Version allows material to be bonded or poured onto the top of the lid to match the surrounding surface. The F91033 and F93033 versions have black Vultrak bonded to the lid. This addition is usually for asphalt applications (this material can also be painted).

The VersaCom Box - Turf Version features a supplied aluminum top to allow artificial turf to be glued on the jobsite, and is tethered to the box. This top is reinforced with multiple aluminum plates for maximum strength and durability. Factory installed turf infill retainment brushes keep infill out of the box.



SOLD SEPARATELY

VERSACOM RISER

The VersaCom Riser has the same dimensions as a full-size VersaCom Box. The riser attaches to the bottom creating a box that is twice as deep.

F90010 *Versacom Riser* **\$535**

VERSACOM BOXES		FULL SIZE 30" L x 18" W x 14" D		HALF SIZE 15" L x 18" W x 14" D	
SYNTHETIC VERSIONS	<i>Synthetic</i>	F910	\$1040	F930	\$717
	<i>Black Vultrak (Factory Installed)</i>	F91033	\$1235	F93033	\$846
TURF VERSION	<i>Turf</i>	F960	\$942	F970	\$749



***We're raising
the bar so
you can too.***

The Pacer[®] Advantage

Vaulting pole models designed for every vaulter, from novice to elite, allowing a smooth transition from pole to pole, no matter the length, weight, or model. Pacer poles are the only vaulting poles on the market featuring a One Year warranty.

SEE PAGES 18-23 FOR DETAILS



PACER[®]